

Insulating cover in black PVC, designed to suit Mains Chassis Plugs. Material has good flame retardant properties, and is non-hydroscopic.

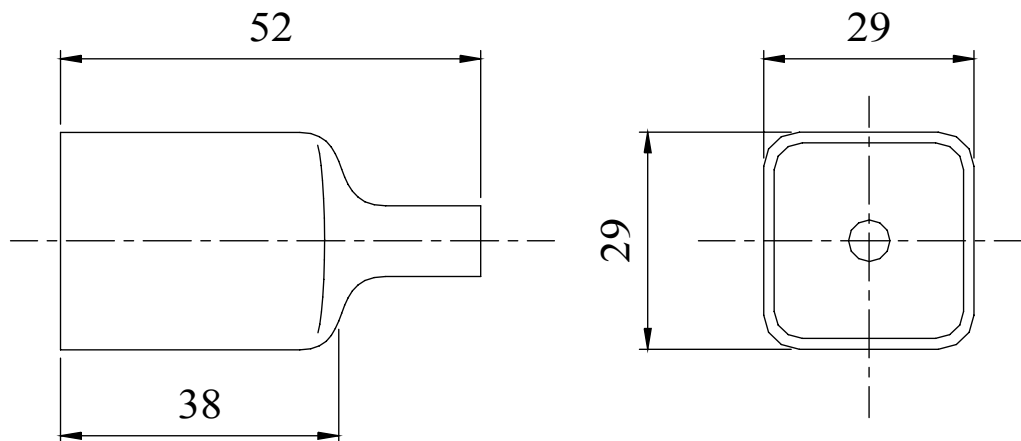
MATERIAL
PVC SPD/717/55 F/R

COLOUR
Black

APPROVALS
UL 94 VO
Limiting Oxygen Index 25,6 +/- 0,45

TEMPERATURE RANGE
-25OC to +60OC
(intermittent peaks +80OC)

Dimensions



WALL THICKNESS TYPICALLY 1.6mm

Tel No. +44(0)1724 273200 Website www.dem-uk.com

PROPRIETARY AND CONFIDENTIAL

THE INFORMATION CONTAINED IN THIS DRAWING IS THE SOLE PROPERTY OF ALPHA 3 MANUFACTURING. ANY REPRODUCTION IN PART OR AS A WHOLE WITHOUT THE WRITTEN PERMISSION OF ALPHA 3 MANUFACTURING IS PROHIBITED.

UNLESS OTHERWISE SPECIFIED:
DIMENSIONS ARE IN MILLIMETRES
LINEAR TOLERANCE:
NO DECIMAL PLACES ±0.5mm
1 DECIMAL PLACE ±0.25mm
2 DECIMAL PLACES ±0.125mm
ANGULAR TOLERANCE: ±1°

FINISH

SEE NOTE

DEBURR AND BREAK SHARP EDGES

DRAWN BY

SPB

TITLE GENERAL SPECIFICATION
MAINS CONNECTOR
INSULATING COVER

APPROVED BY

WC

THIRD ANGLE PROJECTION

SHEET 1 OF 1

DRAWING NO. 532-0100

ISSUE **04**
Release



DEM Manufacturing, Deltron Emcon House
Hargreaves Way, Sawcliffe Ind. Park,
Scunthorpe, North Lincolnshire, DN15 8RF, UK

MATERIAL

SEE NOTE



SCALE 1:1
A4