

The 7000 Universal Range of Audio and Video Connectors employs many innovative features unique to the Deltron series. They are suitable for use in both commercial and industrial electronic applications, where reliability, simple operation and the elimination of RF and mechanical interference is necessary. Common uses include mixing desks, tape recorders, video recorders, DAT recorders and test instrumentation.

Features

- completely interchangeable with all leading manufactures of XLRs.
- can be mounted from either the front or rear face
- HOUSING: a rugged diecasting offering full RF protection, with small industrial standard flange.
- INSERT: thermoplastic with high mechanical, thermal and electrical properties, excellent chemical resistance and dimensional stability.
- CONTACTS: precision machined in brass with generous solder buckets to accept a wide range of cable sizes.
- SHELL TO GROUND TERMINAL: silver plated straight through connection.

Mechanical Properties

Housing Zinc high pressure diecast
Satin nickel or black chrome

Contact Base Valox DR48 UL 94V-0

Contacts Brass, 3 microns silver, anti-tarnish Finish, or 0.5 microns gold

Earth Tag Spring Steel, Nickel plate
3 microns silver plate

Electrical

Rated Voltage 50 V a.c.

Test Voltage 1000 V r.m.s.

Insulation Resistance 103 MΩ

After damp heat 500 MΩ

Contact Resistance 10 mΩ max

Current Rating at 40 deg C
3 pin - 15 amp
4 pin - 10
5 pin - 7.5 amp

Current Rating at 70 deg C
3 pin - 7.5 amp
4 pin - 5
5 pin - 3 amp

Terminal wire sizes
3 pin 2.5 mm² / 14 AWG
4 pin 1.5 mm² / 16 AWG
5 pin 1.0 mm² / 18 AWG

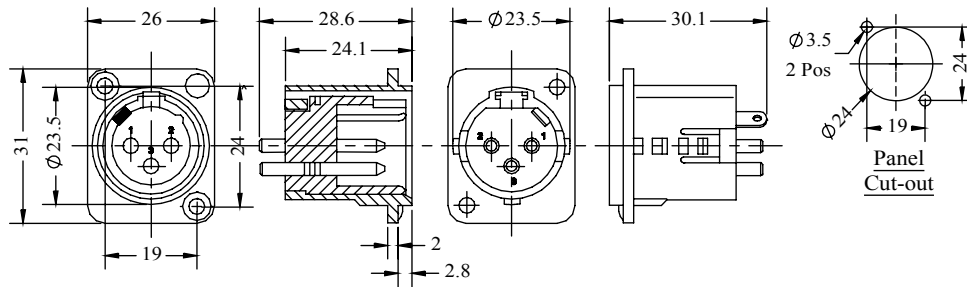
Climatic

Climatic category 25/070/04

Temperature Range -25°C to +70°C

Damp heat, steady state 4 days

Dimensions



| Deltron Part No | Silver Contacts | | Gold Contacts | |
|-----------------|-----------------|----------|---------------|----------|
| | Nickel | Black | Nickel | Black |
| 3-way | 717-0301 | 719-0301 | 723-0301 | 725-0301 |
| 4-way | 717-0401 | 719-0401 | 723-0401 | 725-0401 |
| 5way | 717-0501 | 719-0501 | 723-0501 | 725-0501 |



Tel No. +44(0)1724 273200 Website www.dem-uk.com

PROPRIETARY AND CONFIDENTIAL
THE INFORMATION CONTAINED IN THIS DRAWING IS THE SOLE PROPERTY OF ALPHA 3 MANUFACTURING.
ANY REPRODUCTION IN PART OR AS A WHOLE WITHOUT THE WRITTEN PERMISSION OF ALPHA 3 MANUFACTURING IS PROHIBITED.

UNLESS OTHERWISE SPECIFIED:
DIMENSIONS ARE IN MILLIMETRES
LINEAR TOLERANCE:
NO DECIMAL PLACES ±0.5mm
1 DECIMAL PLACE ±0.25mm
2 DECIMAL PLACES ±0.125mm
ANGULAR TOLERANCE: ±1°



DEM Manufacturing, Deltron Emcon House
Hargreaves Way, Sawcliffe Ind. Park,
Scunthorpe, North Lincolnshire, DN15 8RF, UK

FINISH -
DEBURR AND BREAK SHARP EDGES -
IF IN DOUBT ASK
DO NOT SCALE DRAWING
MATERIAL SEE NOTE

DRAWN BY SPB
APPROVED BY WC
THIRD ANGLE PROJECTION
SHEET 1 OF 1
SCALE 1:1
A4

TITLE GENERAL SPECIFICATION
MULTIPOLE CONNECTOR
CHASSIS PLUG NON LATCHING
DRAWING NO. 717-719-723-725-01
ISSUE 09
Release