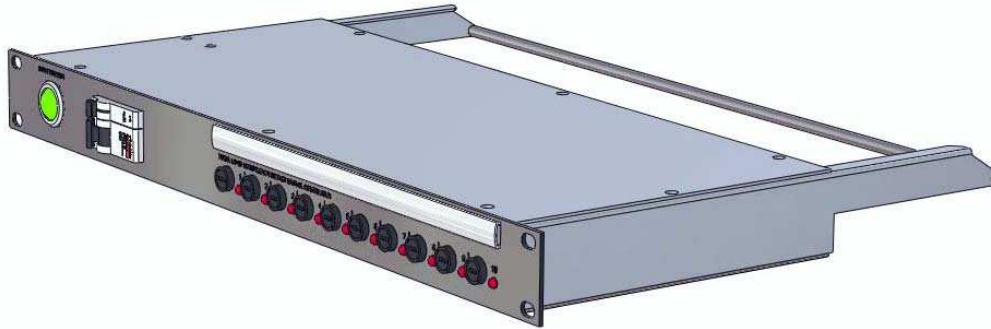


10 Output Mains Distribution Unit with MCB's MDU10-N-B-001



FEATURES

- 16 Amp Max Total Load
- 6 Amp Max Load per output
- 10 Individually fused IEC outlets
- Red LED fuse failure indication
- Input via Neutrik PowerCon
- Input protected by 16 Amp Merlin Gerin MCB
- Aux. MCB contacts present MCB status to a 9 way Dtype on the rear
- Power present indicator
- Lacing bar
- 230VAC 50Hz

This unit is housed in a sturdy 19" 1 RU racked mounted enclosure, 195mm behind panel depth (300mm including lacing bar). The front panel comes in a standard semi-gloss black finish, with wide clip-on designation strip for clear marking. The D-type on the rear is wired to a changeover switch in the Aux. contact module, to give a fail safe view of the MOB status. The fuse indication LED's are configured to light-on fuse failure while the large green LED indicates power is present.

Order MDU10-N-B-002 for version with Ackermann tap off inputs.

This unit is housed in a sturdy 19" 1 RU racked mounted enclosure, 195mm behind panel depth (300mm including lacing bar). The front panel comes in a standard semi-gloss black finish (RAL9005), with wide clip on designation strip for clear marking. Other input connectors are available on request.

Product Code	Description
MDU10-N-B-001	10 Output Mains Distribution Unit with MCB's

As part of continual product improvement, the specifications, details and dimensions shown are subject to change without notice.

DEM Manufacturing
Hargreaves Way, Sawcliffe Industrial Park,
Scunthorpe, North Lincolnshire.
DN15 8RF
United Kingdom

Tel: +44 (0)1724 273200
Fax: +44 (0) 1724 280353
E-Mail: sales@dem-uk.com
Website: www.dem-uk.com