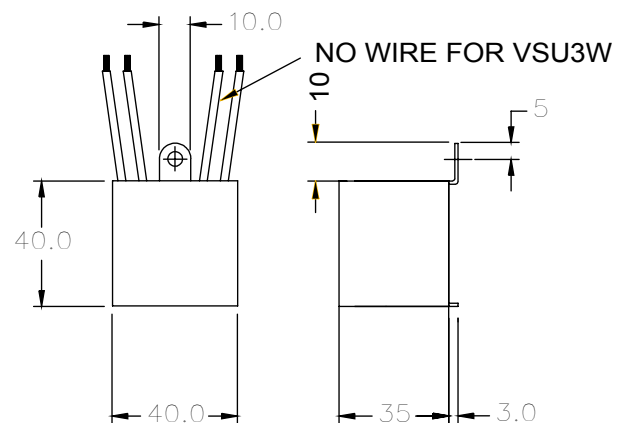
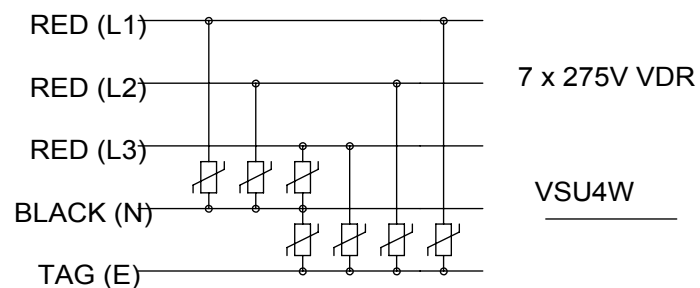
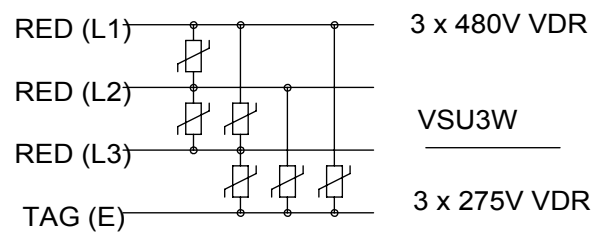


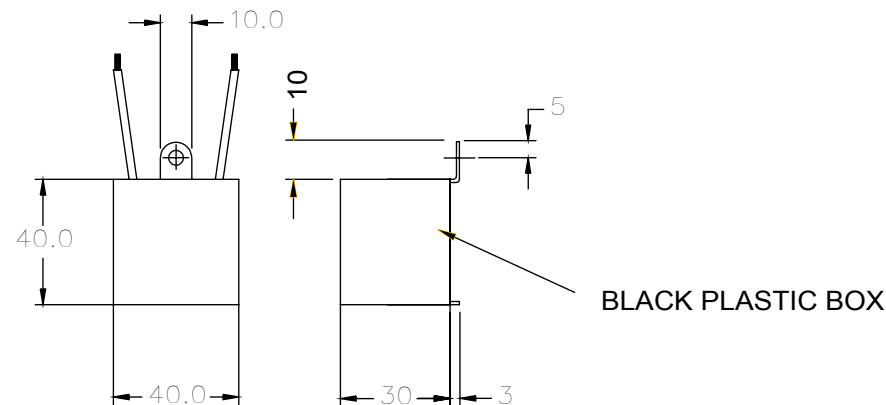
VSU 3W/4W



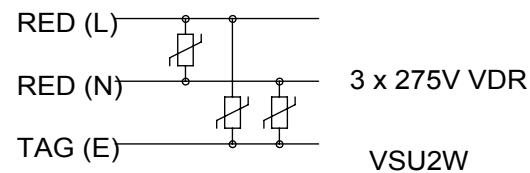
ELECTRICAL SCHEMATIC



VSU 2W



ELECTRICAL SCHEMATIC



MOUNTING: M4 SCREW

CONNECTIONS: 0.75mmSq FLYING LEADS

LENGTH = 150mm

VDR (MOV) INFORMATION

TYPE 275Vac, ENERGY 10X100µs 264J, Ip 8X20µs 6.500A, DISK dia 20mm
TYPE 480Vac, ENERGY 10X100µs 180J, Ip 8X20µs 6.500A, DISK dia 20mm

Tel No. +44(0)1724 273200 Website www.dem-uk.com

PROPRIETARY AND CONFIDENTIAL

THE INFORMATION CONTAINED IN THIS DRAWING IS THE SOLE PROPERTY OF ALPHA 3 MANUFACTURING. ANY REPRODUCTION IN PART OR AS A WHOLE WITHOUT THE WRITTEN PERMISSION OF ALPHA 3 MANUFACTURING IS PROHIBITED.



DEM Manufacturing, Deltron Emcon House
Hargreaves Way, Sawcliffe Ind. Park,
Scunthorpe, North Lincolnshire, DN15 8RF, UK

UNLESS OTHERWISE SPECIFIED:
DIMENSIONS ARE IN MILLIMETRES
LINEAR TOLERANCE:

NO DECIMAL PLACES ±0.5mm
1 DECIMAL PLACE ±0.25mm
2 DECIMAL PLACES ±0.125mm
ANGULAR TOLERANCE: ±1°

FINISH 2 / 3 / 4 WIRE
VSU

DEBURR AND BREAK
SHARP EDGES

DRAWN BY
APPROVED BY

SPB

IF IN DOUBT ASK
DO NOT SCALE DRAWING

THIRD ANGLE PROJECTION



SHEET 1 OF 1

SCALE 1:1

A4

TITLE GENERAL SPECIFICATION
VSU MECHANICAL
& ELECTRICAL DETAIL

DRAWING NO. VSU2W-3W-4W

ISSUE 02

Release