

# Customer Information Sheet

DRAWING No.: M22-410XX22

SHEET 2 OF 2

IF IN DOUBT - ASK

Ⓢ

NOT TO SCALE

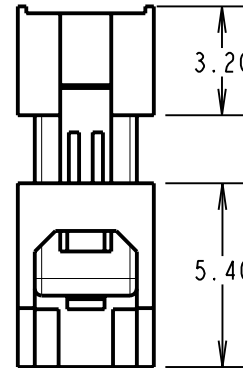
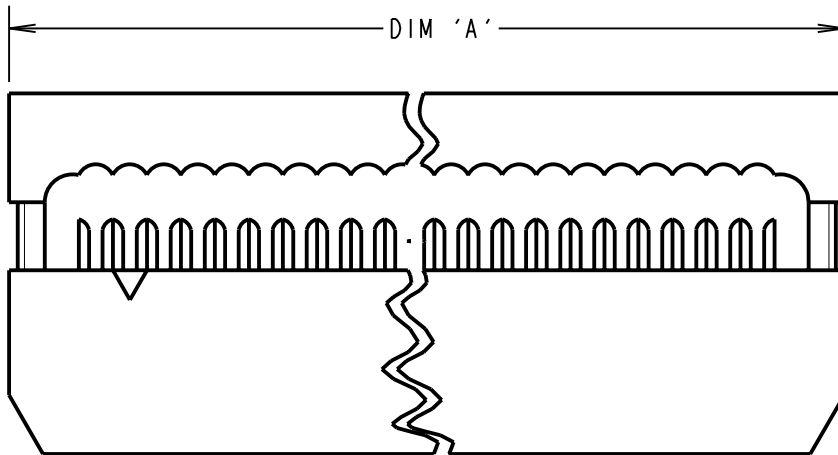
THIRD ANGLE PROJECTION

ALL DIMENSIONS IN mm

**NOTES:**

1. ALL TOLERANCES TO BE  $\pm 0.20$  UNLESS OTHERWISE STATED.
2. RECOMMENDED RIBBON CABLE: 28 AWG, 7 STRAND WIRE, 1mm PITCH FLAT CABLE.

PART No.	No. OF WAYS	DIM 'A'	DIM 'B'
M22-4102622	13+13	31.20	24.00
M22-4104422	22+22	49.20	42.00
M22-4105022	25+25	55.20	48.00



**SPECIFICATION:**

**MATERIAL:**

MOULDING = GLASS-FILLED POLYESTER UL94V-0, BLACK  
CONTACTS = COPPER ALLOY

**FINISH:**

CONTACTS = 0.1μ GOLD ON CONTACT AREA,  
2μ TIN OVER 1μ NICKEL

**ELECTRICAL:**

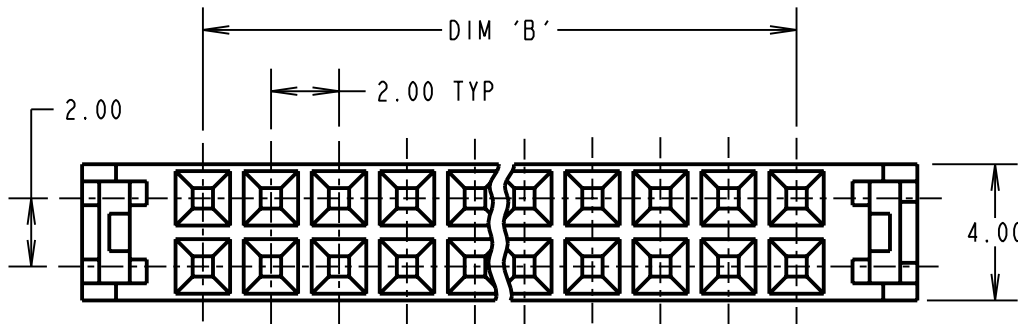
CURRENT RATING = 0.5A MAX  
DIELECTRIC STRENGTH = 500V AC/DC  
CONTACT RESISTANCE = 30 mΩ MAX  
INSULATION RESISTANCE = 1,000 MΩ MIN

**ENVIRONMENTAL:**

OPERATING TEMPERATURE = -55°C TO +105°C

**PACKING:**

TRAYS



CP	6	28.06.10	10852
NAME	ISS.	DATE	C/NOTE
APPROVED: C.PENROSE			
CHECKED: R.ADDE			
DRAWN: D. BECK			
CUSTOMER REF.:			
ASSEMBLY DRG:			

ORDER CODE:

**M22-410XX22**

TOTAL No. OF CONTACTS:   
26, 44, 50

**HARWIN**

HARWIN USA  
TEL: 603 893 5376  
FAX: 603 893 5396  
mis@harwin.com

HARWIN Europe (UK)  
TEL: 023 9231 4545  
FAX: 023 9231 4590  
mis@harwin.co.uk

HARWIN Asia  
TEL: +65 6 779 4909  
FAX: +65 6 779 3868  
mis@harwin.com.sg

THIS DRAWING AND ANY INFORMATION OR DESCRIPTIVE MATTER SET OUT HEREON ARE CONFIDENTIAL AND COPYRIGHT PROPERTY OF THE HARWIN GROUP AND MUST NOT BE DISCLOSED, LOANED, COPIED OR USED FOR MANUFACTURING, TENDERING OR FOR ANY OTHER PURPOSE WITHOUT THEIR WRITTEN PERMISSION.

**TOLERANCES**

~~X =  $\pm 1$ mm~~  
~~X.X =  $\pm 0.25$ mm~~  
~~X.XX =  $\pm 0.10$ mm~~  
~~X.XXX =  $\pm 0.01$ mm~~

ANGLES =  $\pm 5^\circ$   
UNLESS STATED

**MATERIAL:**

SEE ABOVE

**FINISH:**

SEE ABOVE

**S/AREA:**

mm<sup>2</sup>

**TITLE:**

2mm PITCH IDC SOCKET CONNECTOR

**DRAWING NUMBER:**

**M22-410XX22**

SHT  
2  
OF  
2