

# Customer Information Sheet

DRAWING No.: K3603-XX

SHEET 2 OF 2

IF IN DOUBT - ASK

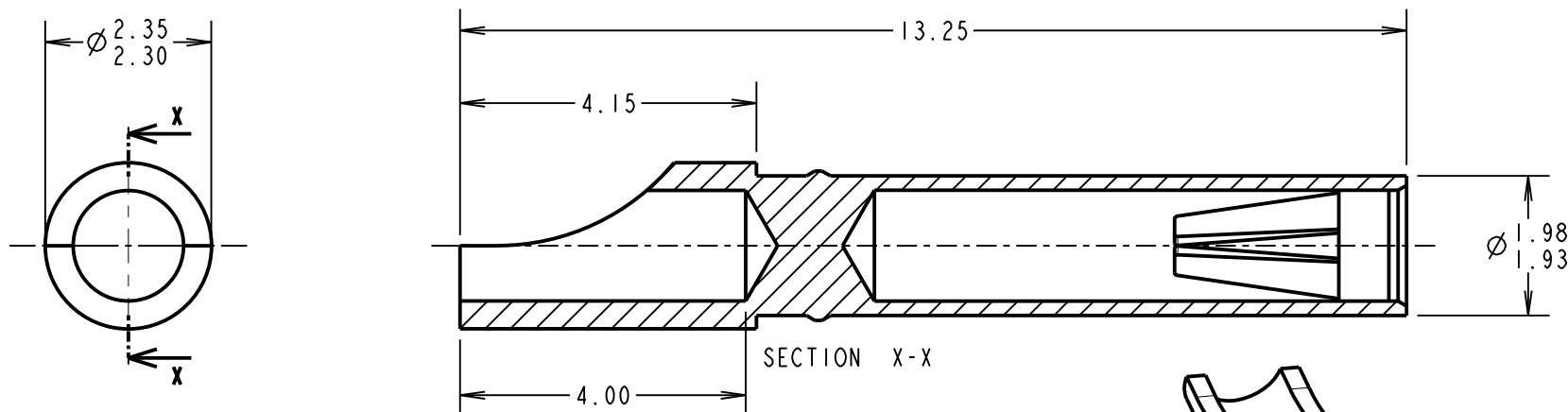
(C)

NOT TO SCALE

THIRD ANGLE PROJECTION

ALL DIMENSIONS IN mm

SEE COMPONENT SPECIFICATION C034XX FOR ASSEMBLY INSTRUCTIONS AND TECHNICAL DATA



## NOTES:

1. RELEVANT SPECIFICATIONS ARE QUOTED ON THE MOULDING DRAWINGS, AND IN COMPONENT SPECIFICATION C034XX (LATEST ISSUE). THE COMPONENT SPECIFICATION ALSO INCLUDES NOTES ON ASSEMBLY METHODS.
2. THIS SOLDER-BUCKET SOCKET FITS INTO MOULDINGS K3601-91 (2-WAY POWER CONNECTOR) OR K3701-91 (3-WAY POWER CONNECTOR).
3. RECOMMENDED WIRE GAUGE = 18AWG, MAXIMUM INSULATION DIAMETER =  $\varnothing 1.8\text{mm}$ .
4. STRIP END OF WIRE BY 3.5-4mm.
5. ASSEMBLY TOOL ZK3610-00 CAN BE USED TO AID INSERTION AND EXTRACTION OF CONTACTS FROM MOULDING.
6. MATERIALS:  
SHELL = BRASS  
CLIP = BERYLLIUM COPPER

ORDER CODE:

**K3603-XX**

FINISH

46 = 3.0 $\mu$  100% TIN OVER NICKEL CLIP  
3.5-5.0 $\mu$  100% TIN OVER NICKEL SHELL  
T6 = 3 $\mu$  90/10 TIN/LEAD CLIP  
3.5-5.0 $\mu$  90/10 TIN/LEAD SHELL

SCALE 7.5

SB	2	12.04.12	11703
NAME	ISS.	DATE	C/NOTE
APPROVED: S.BENNETT			
CHECKED: M.PLESTED			
DRAWN: W. J. BOURNE			
CUSTOMER REF.:			
ASSEMBLY DRG:			

**HARWIN**

www.harwin.com  
technical@harwin.com

THIS DRAWING AND ANY INFORMATION OR DESCRIPTIVE MATTER SET OUT HEREON ARE CONFIDENTIAL AND COPYRIGHT PROPERTY OF THE HARWIN GROUP AND MUST NOT BE DISCLOSED, LOANED, COPIED OR USED FOR MANUFACTURING, TENDERING OR FOR ANY OTHER PURPOSE WITHOUT THEIR WRITTEN PERMISSION.

## TOLERANCES

X. =  $\pm 1\text{mm}$   
X.X =  $\pm 0.25\text{mm}$   
X.XX =  $\pm 0.10\text{mm}$   
X.XXX =  $\pm 0.01\text{mm}$

ANGLES =  $\pm 5^\circ$   
UNLESS STATED

## MATERIAL:

SEE NOTE 6

FINISH: SEE ORDER CODE

S/AREA: mm<sup>2</sup>

## TITLE:

POWER CONNECTOR  
SOLDER-BUCKET SOCKET ASSY

DRAWING NUMBER:

**K3603-XX**

SHT  
2 OF 2