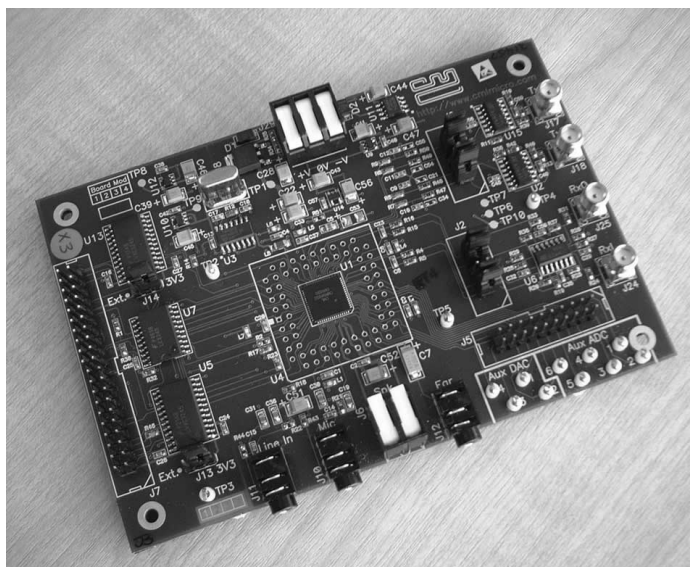


UM/9810/3 October 2009

Features

- Target CMX981 installed
- Buffered control and data interfaces with level shifting
- Auxiliary ADC and DAC interface
- 9.216MHz device clock
- Digital/analogue PCB with low noise floor
- Differential and single-ended baseband interface
- Audio codec interface with mic., earphone and speaker facilities
- On-board power regulation and distribution



1 Brief Description

The EV9810 EvKit is available for the evaluation, experimentation and design-in of the CMX981 Advanced Digital Radio Baseband Processor IC. Comprising a digital/analogue pcb with an on-board CMX981 device, the evkit provides access to the CMX981's baseband signal, control and data interfaces as well as its ADC and DAC on-chip functions. Additionally, an onboard codec interface provides microphone, earphone and loudspeaker inputs and outputs via jack sockets.

Widely populated by jumpers, links and test points this hardware kit allows the user to dynamically monitor and/or isolate all aspects of the IC's signal and voltage levels.

This evkit has a simple power requirement with on-board voltage regulation and distribution.

<u>Section</u>	CONTENTS	<u>Page</u>
1	Brief Description	1
2.	Preliminary Information.....	5
2.1	Laboratory Equipment.....	5
2.2	Handling Precautions.....	5
2.3	Approvals.....	5
3.	Signal Lists	6
4.	Circuit Schematics and Board Layouts	10
5.	Detailed Description	11
5.1	Hardware Description.....	11
5.2	Adjustments and Controls.....	11
5.3	Troubleshooting.....	12
6.	Performance Specification.....	13
6.1	Electrical Performance.....	13

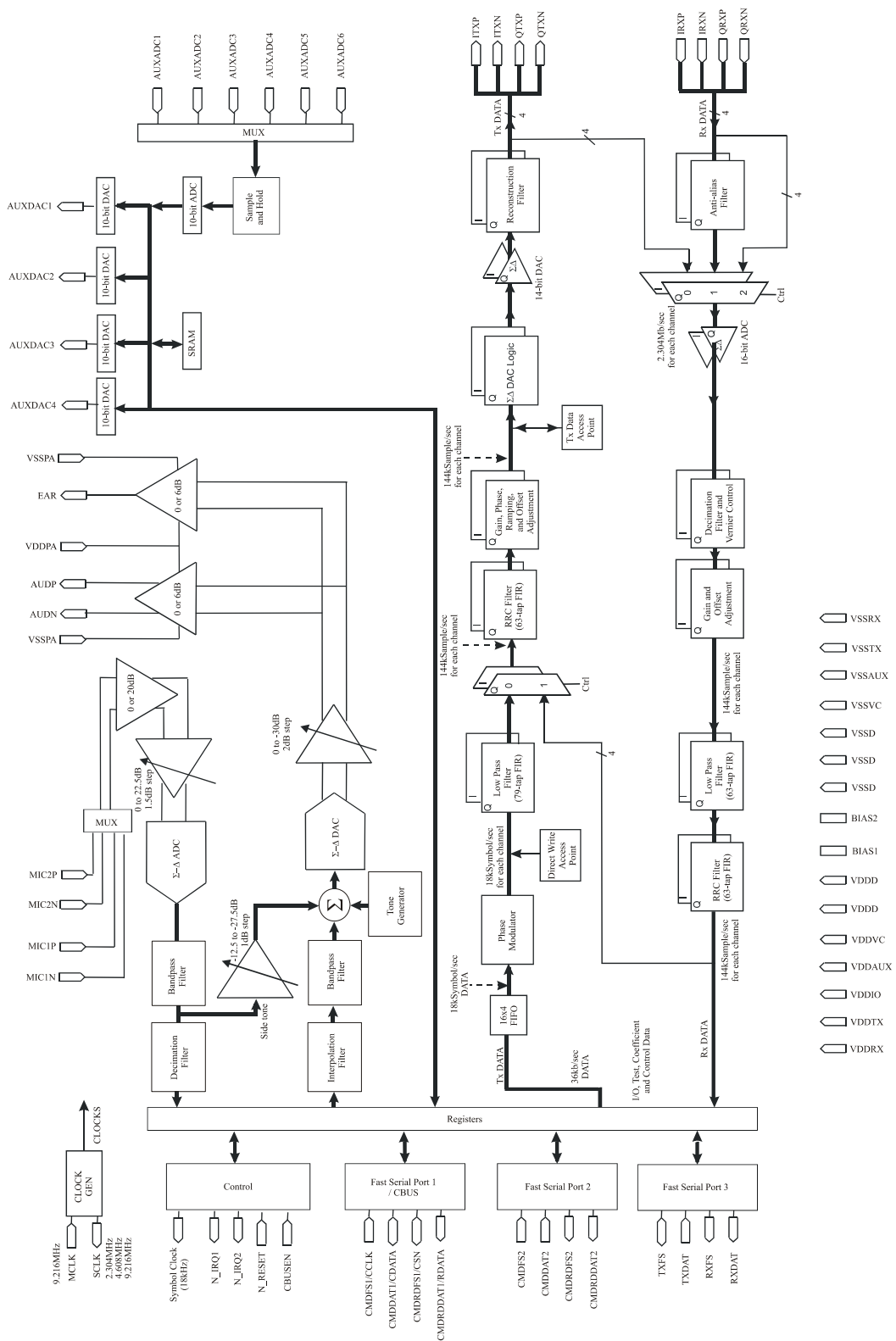


Figure 1 CMX981 Block Diagram

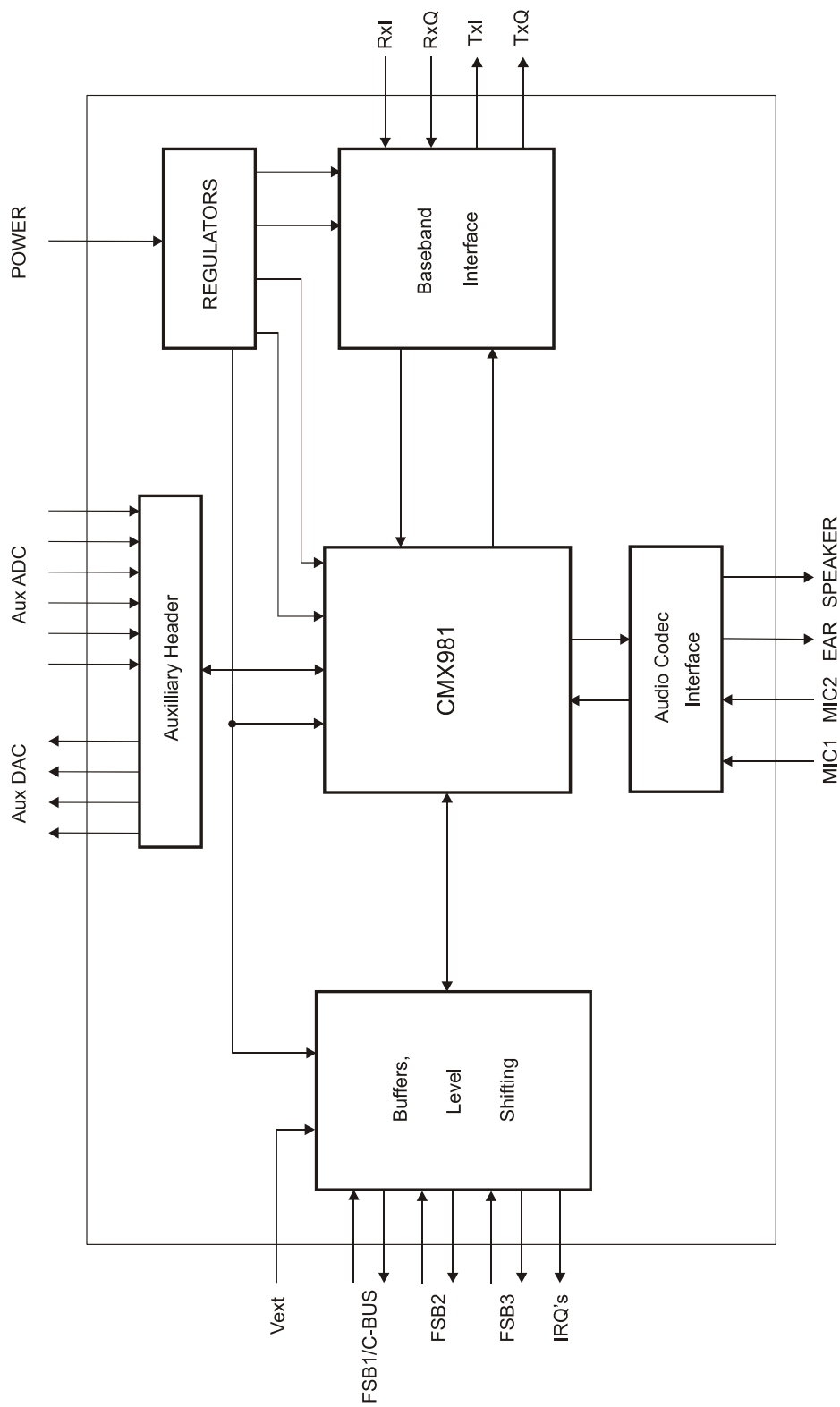


Figure 2 EV9810 Block Diagram

2. Preliminary Information

2.1 Laboratory Equipment

The following laboratory equipment is needed to use this evaluation kit:

2.1.1 Dual Power Supply (not supplied)

±8V (nominal), 500mA

2.1.2 PE0002 Interface Card (optional, not supplied)

The EV9810 can be controlled from a PC via the PE0002 Interface Card, although the receive path output data cannot be read. Please contact CML Technical Support first, for details of how to use the PE0002 with the EV9810.

2.2 Handling Precautions

Like most evaluation kits, this product is designed for use in office and laboratory environments. The following practices will help ensure its proper operation.

2.2.1 Static Protection

This product uses low power CMOS circuits which can be damaged by electrostatic discharge. Partially damaged circuits can function erroneously, leading to misleading results. Observe ESD precautions at all times when handling this product.

2.2.2 Contents - Unpacking

Please ensure that you have received all of the items on the separate information sheet (EV9810) and notify CML within 7 working days if the delivery is incomplete.

2.3 Approvals

There are no approvals for this product.

3. Signal Lists

CONNECTOR PINOUT				
Connector Ref.	Connector Pin No.	Signal Name	Signal Type	Description
J2	1	IRXPL	O/P	I channel receive, positive output from op-amp
J2	2	IRXP	I/P	I channel receive, positive input to CMX981
J2	3	IRXNL	O/P	I channel receive, negative output from op-amp
J2	4	IRXN	I/P	I channel receive, negative input to CMX981
J2	5, 6	AGND	Power	Analogue ground
J2	7	QRXNL	O/P	Q channel receive, negative output from op-amp
J2	8	QRXN	I/P	Q channel receive, negative input to CMX981
J2	9	QRXPL	O/P	Q channel receive, positive output from op-amp
J2	10	QRXP	I/P	Q channel receive, positive input to CMX981
J5	1	AUXADC2	I/P	Auxiliary ADC 2 input
J5	3	AUXADC1	I/P	Auxiliary ADC 1 input
J5	5	AUXADC3	I/P	Auxiliary ADC 3 input
J5	7	AUXADC4	I/P	Auxiliary ADC 4 input
J5	9	AUXADC5	I/P	Auxiliary ADC 5 input
J5	11	AUXADC6	I/P	Auxiliary ADC 6 input
J5	13	AUXDAC2	O/P	Auxiliary DAC 2 output
J5	15	AUXDAC1	O/P	Auxiliary DAC 1 output
J5	17	AUXDAC3	O/P	Auxiliary DAC 3 output
J5	19	AUXDAC4	O/P	Auxiliary DAC 4 output
J5	2, 4, 6, 8, 10, 12, 14, 16, 18, 20	AGND	Power	Analogue ground

CONNECTOR PINOUT				
Connector Ref.	Connector Pin No.	Signal Name	Signal Type	Description
J6	1	AUDPN	O/P	Audio power amp, negative output.
J6	2	AUDPP	O/P	Audio power amp, positive output.
J7	1, 29	VEXT	Power	Host power rail for level shifters
J7	3	N_IRQ2	O/P	CMX981 – Interrupt Request 2
J7	5	SCMDRdFs2	O/P	CMX981 – FSB2 Read Frame Sync
J7	7	SCMDFs2	I/P	CMX981 – FSB2 Frame Sync
J7	9	SCMDRdDATA2	O/P	CMX981 – FSB2 Read Data
J7	11	SCMDDATA2	I/P	CMX981 – FSB2 Data
J7	13	SCLK	O/P	CMX981- Serial Clock
J7	15	N_RESET	I/P	CMX981 – Reset Pin
J7	17	SRxFs	O/P	CMX981 – FSB3, Receive Frame Sync
J7	19	SRxDATA	O/P	CMX981 – FSB3, Receive Data
J7	21	STxFs	I/P	CMX981 – FSB3 Transmit Frame Sync
J7	23	STxDATA	I/P	CMX981 – FSB3, Transmit Data
J7	25	N_IRQ1	O/P	CMX981 – Interrupt Request 1
J7	27	SYMCLK	O/P	CMX981 – symbol clock output
J7	31	CSN	I/P	CMX981 – C-BUS chip select, FSB1 Read Frame Sync
J7	33	CCLK	I/P	CMX981 – C-BUS clock, FSB1 Frame Sync
J7	35	RDATA	O/P	CMX981 – C-BUS read data, FSB1 Read Data
J7	37	CDATA	I/P	CMX981 – C-BUS data, FSB1 Data
J7	39	CBUSEN	I/P	CMX981 C-BUS/FSB1 select.

CONNECTOR PINOUT				
Connector Ref.	Connector Pin No.	Signal Name	Signal Type	Description
J7	2, 4, 6, 8, 10, 12, 14, 16, 18, 20, 22, 24, 26, 28, 30, 32, 34, 36, 38, 40	DGND	Power	Digital ground
J9	1	ITXPL	I/P	I channel transmit, positive input to op-amp
J9	2	ITXP	O/P	I channel transmit, positive output from CMX981
J9	3	ITXNL	I/P	I channel transmit, negative input to op-amp
J9	4	ITXN	O/P	I channel transmit, negative output from CMX981
J9	5, 6	AGND	Power	Analogue ground
J9	7	QTXNL	I/P	Q channel transmit, negative input to op-amp
J9	8	QTXN	O/P	Q channel transmit, negative output from CMX981
J9	9	QTXPL	I/P	Q channel transmit, positive input to op-amp
J9	10	QTXP	O/P	CMX981 - Q channel transmit, positive output from CMX981
J10	TIP	MIC1P	I/P	CMX981 – MIC1, positive input
J10	RING	MIC1N	I/P	CMX981 – MIC1, negative input
J10	SLEEVE	NC		
J11	TIP	MIC2P	I/P	CMX981 – MIC2, positive input
J11	RING	MIC2N	I/P	CMX981 – MIC2, negative input
J12	TIP	EAR	O/P	CMX981 – Earpiec output
J12	RING	AGND	Power	Analogue ground
J17	1	QTX	O/P	Q channel Tx, single ended output

CONNECTOR PINOUT				
Connector Ref.	Connector Pin No.	Signal Name	Signal Type	Description
J18	1	ITx	O/P	I channel Tx, single ended output
J24	1	IRx	I/P	I channel Rx, single ended input
J25	1	QRx	I/P	Q channel Rx, single ended input
J29	1	+V	Power	EV9810 power supply
J29	2	AGND	Power	EV9810 power supply
J29	3	-V	Power	EV9810 power supply

TEST POINTS		
Test Point Ref.	Default Measurement	Description
TP1	+2.5 Volts	VDDPA
TP2, TP3	0 Volts	Digital ground
TP4, TP5	0 Volts	Analogue ground
TP6	+5.0 Volts	+5V0 – Power rail for analogue interface.
TP7	-5.0 Volts	-5V0 – Power rail for analogue interface.
TP8	+3.3 Volts	VDDIO– CMX981 I/O power rail
TP9	+2.5 Volts	VDDD – CMX981 Digital power rail
TP10	+2.5 Volts	VDDA – CMX981 Analogue power rail
TP13 - 16	0 Volts	CMX981 Auxilliary DAC4-1
TP17 – 20	-	CMX981 Auxilliary ADC4-1
TP25	-	CMX981 Auxilliary ADC5
TP26	-	CMX981 Auxilliary ADC6

JUMPERS/LINKS			
Link Ref.	Positions	Default Position	Description
J13	1-2/2-3	2-3	Select power rail for level shifting, 1-2 is host power, 2-3 is +3V3 rail (VDDIO)
J14	1-2/2-3	2-3	Select power rail for level shifting, 1-2 is host power, 2-3 is +3V3 rail (VDDIO)

Notes: I/P = Input
O/P = Output
BI = Bidirectional
NC = Not connected

4. Circuit Schematics and Board Layouts

For clarity circuit schematics are included as separate, high resolution, files in pdf format.

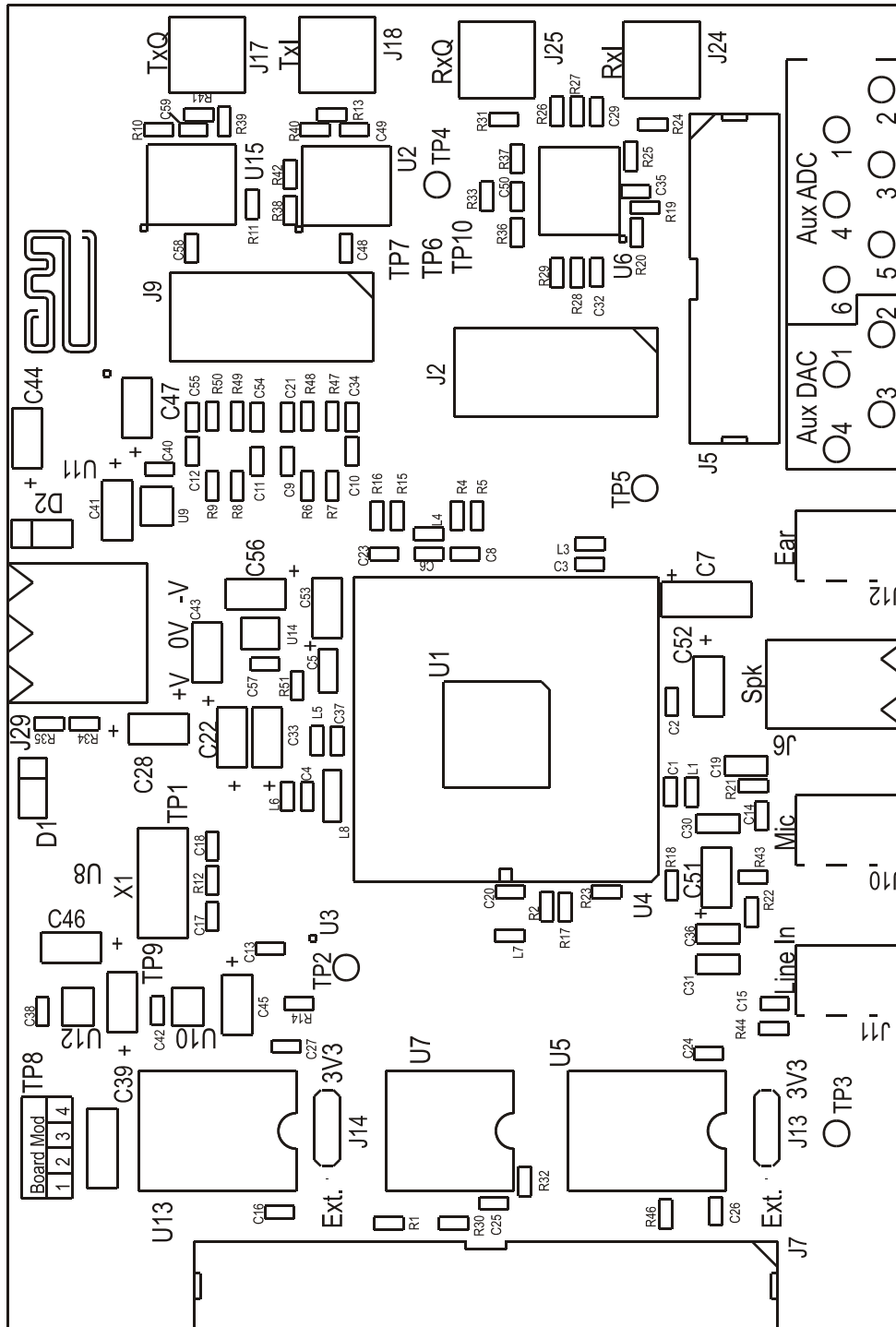


Figure 3 Evaluation Board - Layout

5. Detailed Description

5.1 Hardware Description

The serial interface ports for the CMX981 are brought out to a 40 pin header, J7. All signals are buffered and can be level shifted, to nominally 5 volt logic, by the following procedure:

- Connect J7 pins 1 and 29 to power rail of external logic.
- Position jumpers, J13 and J14 to short circuit pins 1 and 2, leaving pins 2 and 3 open circuit. This position is marked as 'Ext' on the pcb silk screen.

The board can be powered by a standard bench dual power supply unit. All the power rail levels required by the EV9810 circuitry are generated with on board regulators. Note that the +5 volt and -5 volt rails are provided for the baseband interface only and are not required by the CMX981 itself.

The Baseband interface provides conversion to and from the differential I and Q channel signals of the CMX981 from and to single ended signals. The single ended signals are brought to SMA sockets. This circuitry may be isolated, and the differential signals accessed, by removing jumpers across the following points:

Signal	Jumper Position
IRXP	J2 pin 1 to J2 pin 2
IRXN	J2 pin 3 to J2 pin 4
QRXN	J2 pin 9 to J2 pin 10
QRXP	J2 pin 7 to J2 pin 8
ITXP	J9 pin 1 to J9 pin 2
ITXN	J9 pin 3 to J9 pin 4
QTXN	J9 pin 7 to J9 pin 8
QTXP	J9 pin 9 to J9 pin 10

For the microphone inputs and the earpiece output the CMX981 codec audio connections are brought out to 3.5mm mono jacks. The audio power amplifier outputs are brought to a terminal block, J6, across which an 8Ω speaker may be connected.

The CMX981 auxilliary DAC outputs and ADC inputs are brought to both a pin header, J5, and individual test points.

An on-board oscillator circuit provides the 9.216MHz for MCLK of the CMX981.

Separate digital and analogue ground planes are provided. These are connected via 0R link, R3, which is on the underside of the PCB.

5.2 Adjustments and Controls

None.

5.3 Troubleshooting

- The +5 volt supply, measured at TP6, is not at 5 volts:
Ensure that + and – 8 volts supplies are applied at the same time.
- Achieving the best performance from the receive path A to D converters:
To get the lowest noise levels at the RxI and RxQ inputs, the user should ensure that their test signal source is correctly terminated. This could be achieved by attaching a T-piece to the appropriate input connector. One side of the T-piece is fed from the signal source whilst the other side is used to terminate the cable.

6. Performance Specification

6.1 Electrical Performance

6.1.1 Absolute Maximum Ratings

Exceeding these maximum ratings can result in damage to the Evaluation Kit.

	Min.	Max.	Units
Supply			
+V	-0.3	12.0	
-V	+0.3	-12.0	V
Voltage on any connector J7 pin to V_{SS} ,	-0.3	$V_{DDIO} + 0.3$	V
Voltage on any other pin	-0.3	$V_{DDD} + 0.3$	V
Current into or out of any +V or -V and V_{SS} pins	0	+/-150	mA
Storage Temperature	-10	+70	°C
Operating Temperature	+10	+35	°C

6.1.2 Operating Limits

Correct operation of the Evaluation Kit outside these limits is not implied.

	Notes	Min.	Max.	Units
Supply				
(+V – V_{SS})		7.5	8.5	V
(-V – V_{SS})		-7.5	-8.5	V
Operating Temperature		+10	+35	°C

6.1.3 Operating Characteristics

For the following conditions unless otherwise specified:

Evaluation Device Xtal Frequency = 9.216MHz.

	Notes	Min.	Typ.	Max.	Units
DC Parameters					
Voltage regulator outputs					
+2V5PA (V_{DDPA})			2.5		V
+2V5A (V_{DDA})			2.5		V
+2V5D (V_{DDD})			2.5		V
+3V3 (V_{DDIO})			3.3		V
+5V0			5.0		V
-5V0			-5.0		V
Supply current					
I_{+V}	1		75	230	mA
I_{-V}			55	60	mA

Notes: 1. Maximum value occurs when driving Audio PA into 8Ω

CML does not assume any responsibility for the use of any circuitry described. No IPR or circuit patent licences are implied. CML reserves the right at any time without notice to change the said circuitry and any part of this product specification. Evaluation kits and demonstration boards are supplied for the sole purpose of demonstrating the operation of CML products and are supplied without warranty. They are intended for use in a laboratory environment only and are not for re-sale, end-use or incorporation into other equipments. Operation of these kits and boards outside a laboratory environment is not permitted within the European Community. All software/firmware is supplied "as is" and is without warranty. It forms part of the product supplied and is licensed for use only with this product, for the purpose of demonstrating the operation of CML products. Whilst all reasonable efforts are made to ensure that software/firmware contained in this product is virus free, CML accepts no responsibility whatsoever for any contamination which results from using this product and the onus for checking that the software/firmware is virus free is placed on the purchaser of this evaluation kit or development board.

 CML Microcircuits (UK) Ltd <small>COMMUNICATION SEMICONDUCTORS</small>	 CML Microcircuits (USA) Inc. <small>COMMUNICATION SEMICONDUCTORS</small>	 CML Microcircuits (Singapore) Pte Ltd <small>COMMUNICATION SEMICONDUCTORS</small>
Tel: +44 (0)1621 875500 Fax: +44 (0)1621 875600 Sales: sales@cmlmicro.com Tech Support: techsupport@cmlmicro.com	Tel: +1 336 744 5050 800 638 5577 Fax: +1 336 744 5054 Sales: us.sales@cmlmicro.com Tech Support: us.techsupport@cmlmicro.com	Tel: +65 67450426 Fax: +65 67452917 Sales: sg.sales@cmlmicro.com Tech Support: sg.techsupport@cmlmicro.com
- www.cmlmicro.com -		