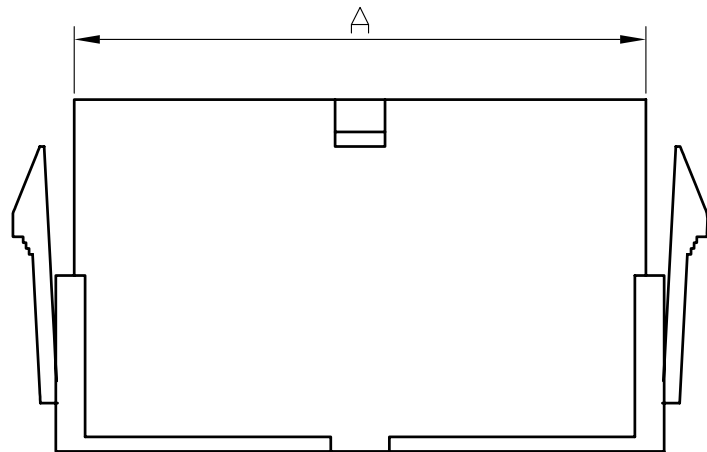
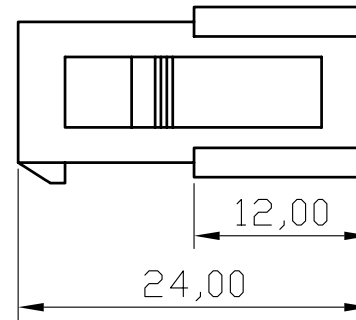
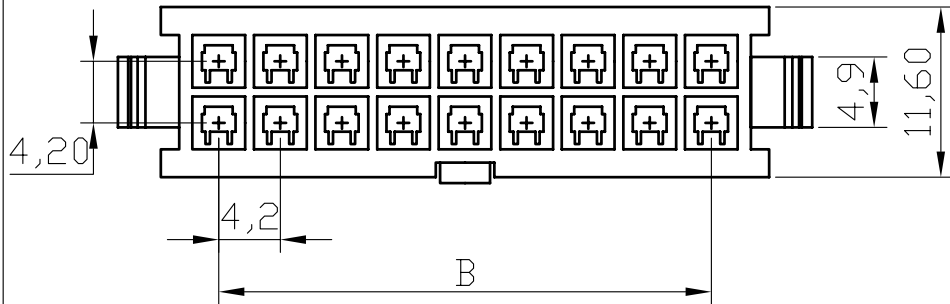


REV	ECN. NO.	APP	DATE
A	EDIÇÃO INICIAL		
B	NOVO CÓDIGO		
C	CÓD. ANT. : 4200HMxxR		22/11/11



HOW TO ORDER:

4200 [H][] [M][] [] [] [R]
1 2 3 4 5 6 7

Series Nr.
4200

1 - Product:
(H) - Housing

2 - Row Version:
(S) - Single Row
(D) - Double Row

3 - Type:
(F) - Female
(M) - Male

4 - Nr. of Ways:
02 (1x2) - 12 (1x12)
02 (2x1) - 24 (2x12)

5 - Material:
(N) Nylon 66 UL 94V-2
(V) Nylon 66 UL 94V-0

6 - Body Option:
(E) - With Ear
(N) - W/O Ear

7 - (R) RoHS Compliant

Circuits	Dim.B	Dim.A	Circuits	Dim.B	Dim.A	Circuits	Dim.B	Dim.A
2		5.6	10	16.8	22.4	18	33.6	39.2
4	4.2	9.8	12	21.0	26.6	20	37.8	43.4
6	8.4	14.0	14	25.2	30.8	22	42.0	47.6
8	12.6	18.2	16	29.4	35.0	24	46.2	51.8



MATRIX TECNOLOGIA IND. E COM. LTDA.

UNIT mm	SCALE 2:1	TITLE 4,2mm HOUSING MALE DUAL ROW	DATE MARCH 2010
TOLERANCE: ±0.25			APP. BY
		MATL	CHK. BY
		DWG. NO.	DR. BY FELIPE