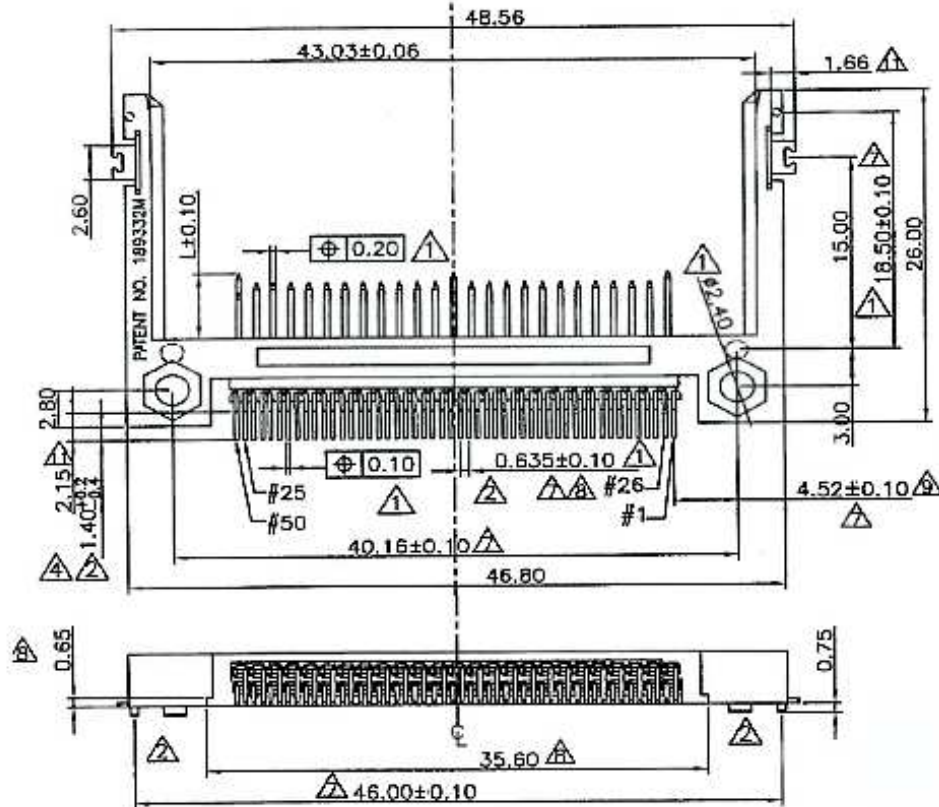
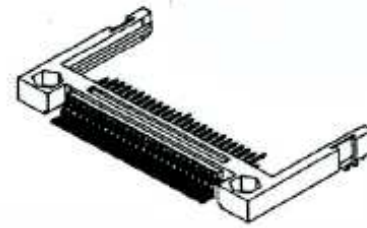
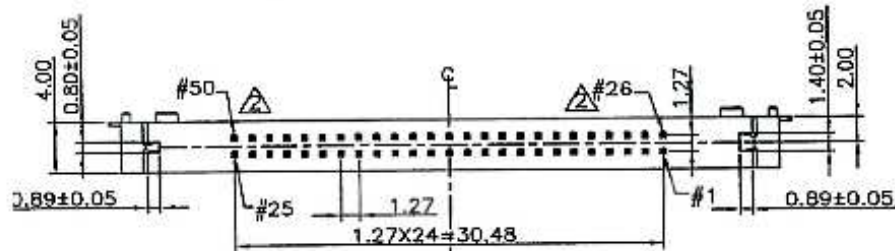
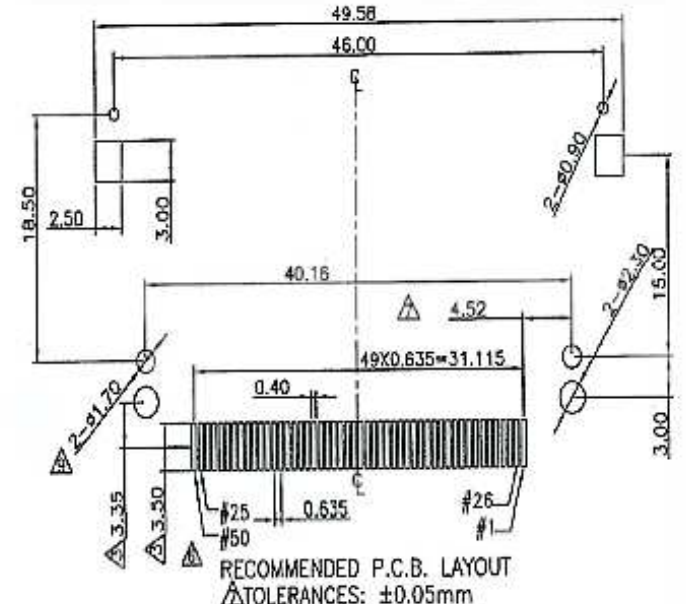
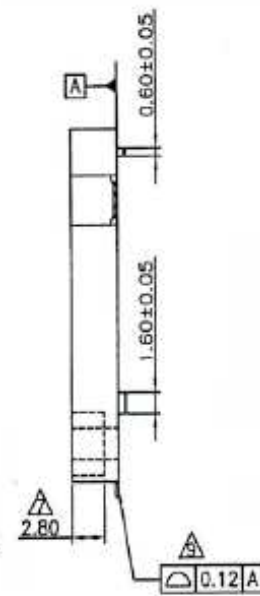


REV	ECN. NO.	APP	DATE
A	EDIÇÃO INICIAL		
B	NOVO CÓDIGO		
C	COTA 40.16 ERA 46.16		14/05/10



- NOTES**
- ▲ MATERIAL
 - Insulator: Thermal Plastic UL94V-0
 - Contacts: Copper Alloy
 - Mount Ear: Copper Alloy
 - CONTACT PLATING
 - ▲ Underplate: 50u"~100u" Nickel
 - ▲ Contact Area: 1u"~30u" Selective Gold
 - ▲ Solder Tails Area: 100u"~200u" Tin/Lead (Brighten Tin) or 100u"~200u" Tin/Lead Free (Brighten Tin/Matten Tin)



HOW TO ORDER: CF7752W50BDR

POWER	5.00mm	1,13,38,50
GENERAL	4.25mm	all other pins
DETECT	3.50mm	25,26
Pin type	Interface Dim. L	Pin No.

MATRIX **MATRIX Tecnologia Ind. e Com. Ltda.**

UNIT mm	SCALE	TITLE	DATE OCTOBER 2007
TOLERANCE: ±0.25		CFA Socket SIlm 50 Ways	APP. BY
		MATL	CHK. BY
		DWG. NO.	DR. BY Diego