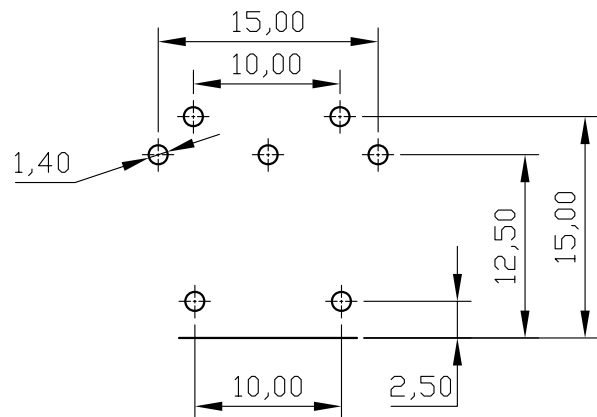
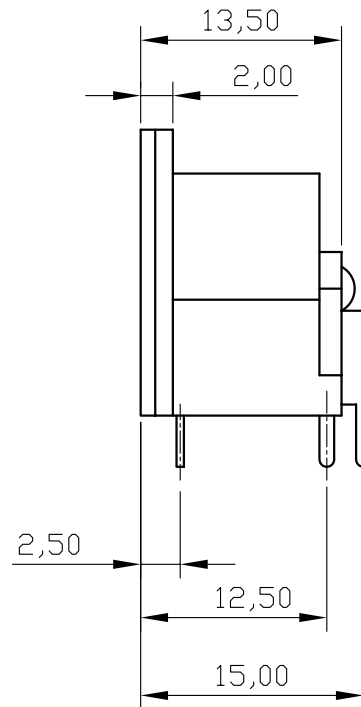
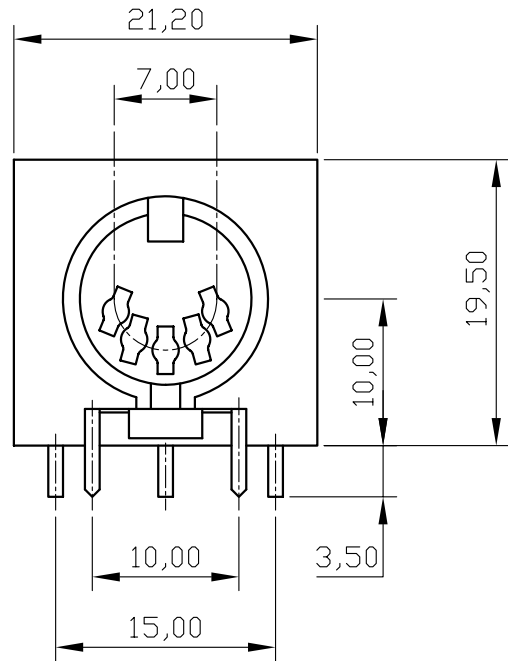


REV	ECN. NO.	APP	DATE
A	EDIÇÃO INICIAL		
B	NOVO CÓDIGO		



SPECIFICATIONS

1. Contact Resistance: 20mΩ Max.
2. Insulation Resistance: 100MΩ at 500V D.C
3. Voltage Withstanding: AC 500V 1 Minute
4. Insertion Force: 4.0Kg Max.
5. Withdraw all Force: 1-3,5Kg
6. Life Test: 5000 Cycles Min. after Test, Contact Resistance Shall not Exceed 50mΩ
7. Current Rating: AC: 100V 1A
DC: 24V 1A

HOW TO ORDER:

MD[][][10,0]R

1 2 3

- | | |
|--|------------------------------------|
| 1- Nr. of Contacts
03 to 08 | 3- Mount Hole
5,00mm
10,00mm |
| 2- Body Options
(P)- All Plastic
(F)- With Shield and
With Grounding Strip
(S)- With Shield and
Without Grounding Strip | |



MATRIX Tecnologia Ind. e Com. Ltda.

UNIT mm	SCALE 2:1	TITLE 10,0mm DIN JACK	DATE MARCH 2010
TOLERANCE: ±0.25			APP. BY
		MATL	CHK. BY
		DWG. NO.	DR. BY FELIPE