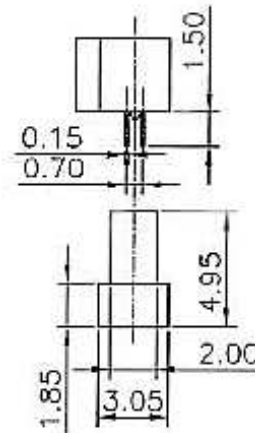
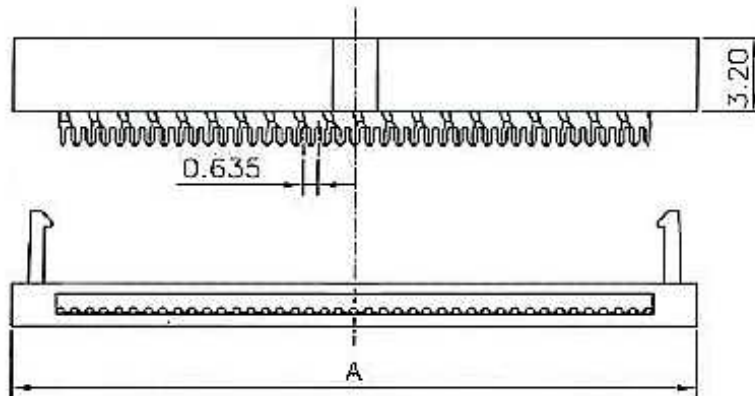
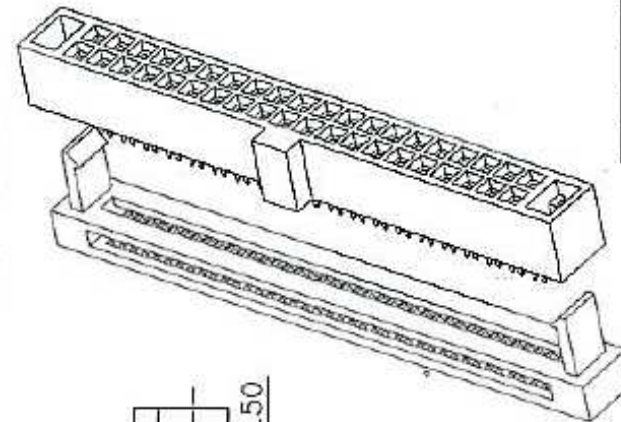
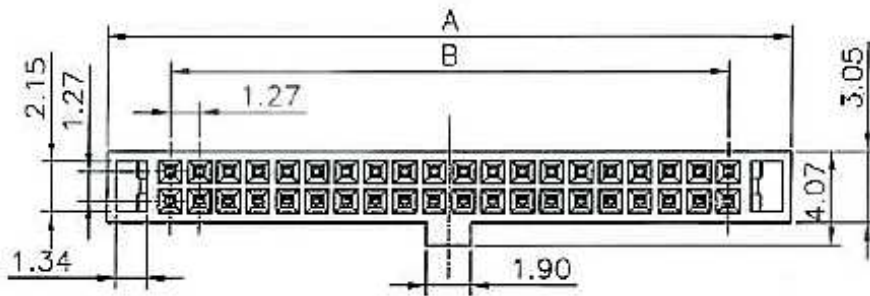


REV	ECN. NO.	APP	DATE
A	EDIÇÃO INICIAL		



**SPECIFICATION:**  
**ELECTRICAL**


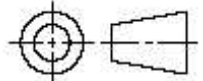
Current Rating: 0.5A  
Voltage Rating: 250V AC  
Insulation Resistance: 5000MΩ Min  
Contact Resistance: 10mΩ Max.  
Dielectric Withstanding Voltage: AC 1500V  
Temperature Rating: -40°C To +105°C

**HOW TO ORDER:**  
**4401[ ][SR][ ][WB]1,27R**  
**1 2 3 4**

1- Nr. of Ways  
See Table  
2- Function  
(SR) With Strain Relief  
( ) Without Strain Relief

3- Terminal Plating  
(D)-FLASH Au  
(F)-0,38um Au  
(G)-0,76um Au  
(C)-0,38um Au/Sn  
(H)-0,76um Au/Sn  
4- Body Option  
(WB) With Bump  
( ) Without Bump

PIN Q'TY	A	B	PIN Q'TY	A	B
34 PIN	25.78	20.32	6 PIN	8.00	2.54
40 PIN	29.59	24.13	10 PIN	10.54	5.08
44 PIN	32.13	26.67	12 PIN	11.81	6.35
50 PIN	35.94	30.48	16 PIN	14.35	8.89
60 PIN	42.29	36.83	20 PIN	16.89	11.43
68 PIN	47.37	41.91	26 PIN	20.70	15.24
80 PIN	54.99	49.53	30 PIN	23.24	17.78

 <b>MATRIX</b>		<b>MATRIX TECNOLOGIA IND. E COM. LTDA.</b>	
UNIT mm	SCALE	TITLE IDC Socket Connector 1,27x1,27mm	DATE SEPTEMBER 2007
TOLERANCE: ±0.25			APP. BY
		MATL	CHK. BY
		DWG. NO.	DR. BY DINO