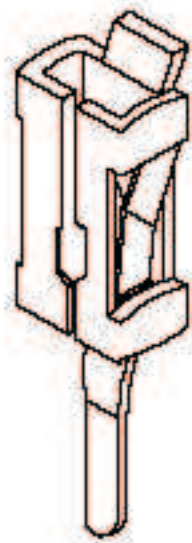
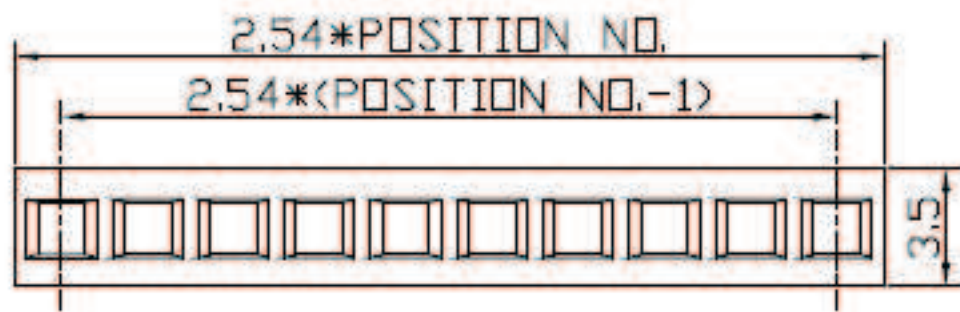
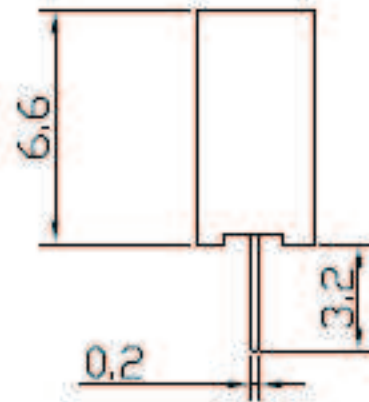
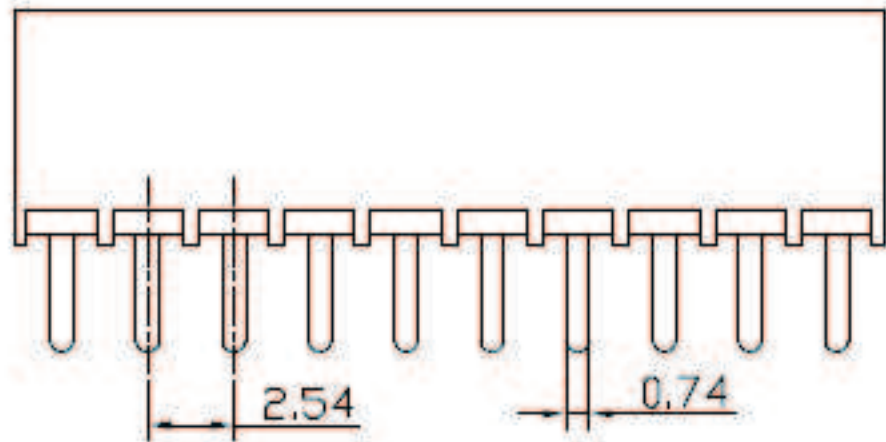


REV	ECN. NO.	APP	DATE
A	EDIÇÃO INICIAL		



**SPECIFICATIONS**  
 CURRENT RATING  
 1 AMP DC  
 CONTACT RESISTANCE  
 30 MILLIOHM MAX  
 INSULATION RESISTANCE  
 3000 MEGOHM MIN  
 DIELECTRIC VOLTAGE  
 500V AC FOR ONE MINUTE  
 OPERATING TEMPERATURE  
 -40°C TO 105°C

**HOW TO ORDER:**  
**MAT[ ][S][R][ ]S6.6[R]**  
**1 2 3 4 5**

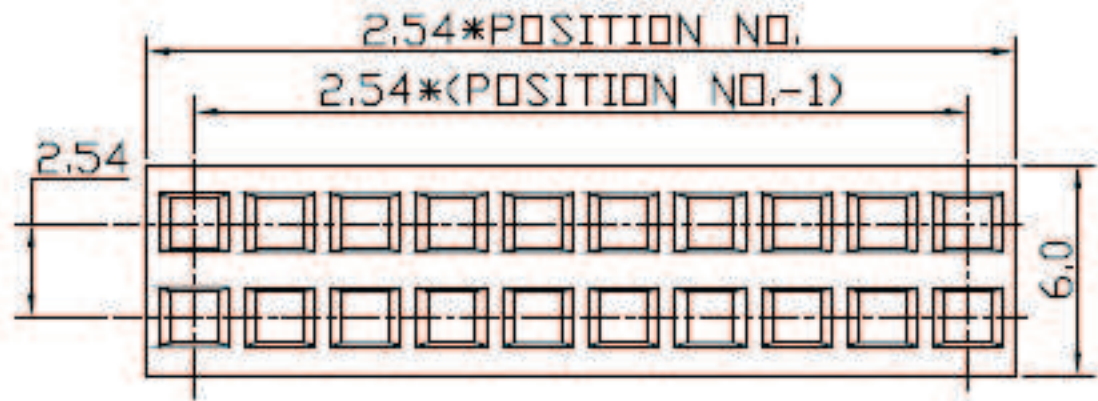
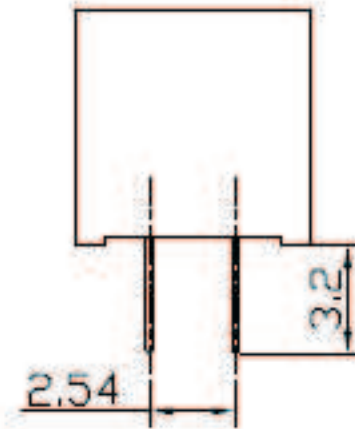
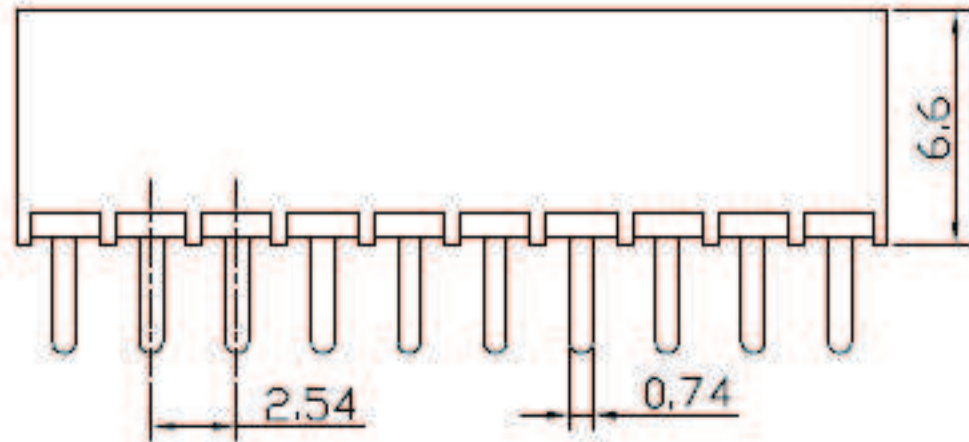
- 1- Nr. of Ways  
 Single Row 1 to 40  
 Double Row: 2 to 80
- 2- Row Version:  
 (S)-Single Row  
 (D)-Double Row
- 3- Pin Style  
 (N)-90°  
 (R)-180°
- 4- Terminal Plating:  
 (E)-Sn  
 (D)-FLASH Au  
 (F)-0,38um Au  
 (G)-0,76um Au  
 (C)-0,38um Au/Sn  
 (H)-0,76um Au/Sn
- 5- (R) RoHS Compliant



PC BOARD LAYOUT

		<b>MATRIX Tecnologia Ind. e Com. Ltda.</b>	
UNIT mm	SCALE	TITLE 2.54mm FEMALE HEADER H=6.6mm SINGLE ROW 180°	DATE September 2007
TOLERANCE: ±0.25			APP. BY
		MATL	CHK. BY
		DWG. NO.	DR. BY Diego

REV	ECN. NO.	APP	DATE
A	EDIÇÃO INICIAL		

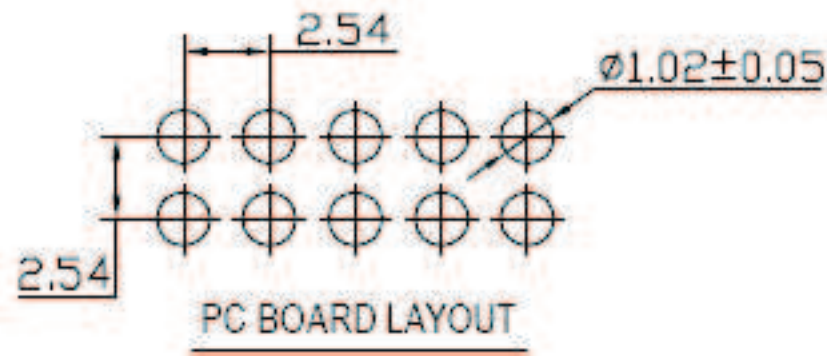


**SPECIFICATIONS**

- CURRENT RATING  
1 AMP DC
- CONTACT RESISTANCE  
30 MILLIOHM MAX
- INSULATION RESISTANCE  
3000 MEGOHM MIN
- DIELECTRIC VOLTAGE  
500V AC FOR ONE MINUTE
- OPERATING TEMPERATURE  
-40 °C TO 105 °C

**HOW TO ORDER:**  
**MAT[ ][D][R][ ]S6.6[R]**  
**1 2 3 4 5**

- 1- Nr. of Ways  
Single Row: 1 to 40  
Double Row: 2 to 80
- 2- Row Version:  
(S)-Single Row  
(D)-Double Row
- 3- Pin Style  
(N)-90°  
(R)-180°
- 4- Terminal Plating:  
(E)-Sn  
(D)-FLASH Au  
(F)-0,38um Au  
(G)-0,76um Au  
(C)-0,38um Au/Sn  
(H)-0,76um Au/Sn
- 5- (R) RoHS Compliant



		<b>MATRIX Tecnologia Ind. e Com. Ltda.</b>	
UNIT mm	SCALE	TITLE 2.54mm FEMALE HEADER H=6.6mm DUAL ROW 180°	DATE September 2007
TOLERANCE: ±0.25			APP. BY
		MATL	CHK. BY
		DWG. NO.	DR. BY Diego