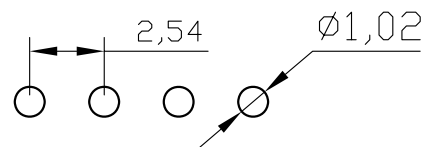
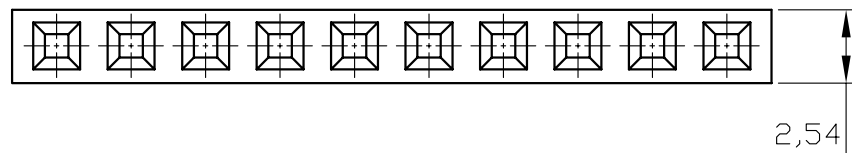
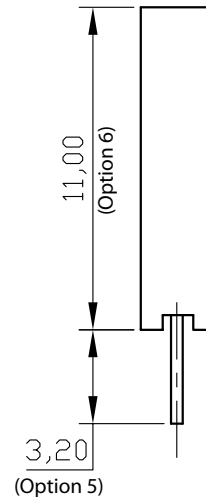
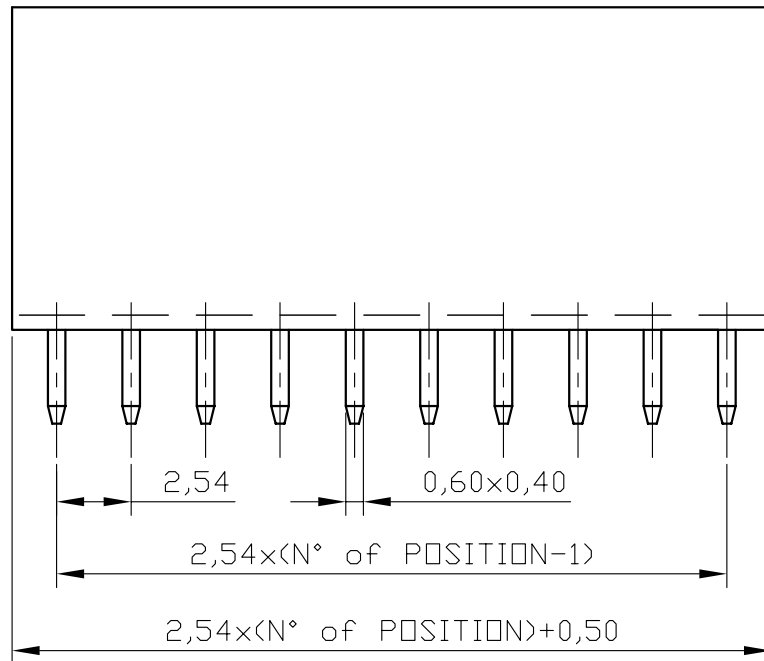


REV/	ECN. NO.	APP	DATE
A	MELHORIAS NO ASPECTO VISUAL		
B	CÓD. ANT.: MAT-X-S-R-X-S11-X-R		01/2012



Recommended P.C.Board Hole Layout

SPECIFICATIONS

Current Rating: 3Amps
 Insulation Resistance: 1000MΩ Min.
 Dielectric Withstanding: 600V AC/DC
 Contact Resistance: 20mΩ Max.
 Operating Temperature: -40°C to 105°C

MATERIALS

Contact Material: Phosphor Bronze
 Insulation Material: Polyester, UL 94V-0
 P.B.T

HOW TO ORDER: MAT [] [S] [R] [] [] [W] [R]

1 2 3 4 5 6 7

1 - Nr. of Ways:

Single Row: 2 to 40
 Double Row: 2 to 80

2 - Row Version:

(S) - Single Row
 (D) - Double Row

3 - Pin Style:

(R) - Straight (180°)

4 - Terminal Plating:

(E) - Sn
 (D) - Flash Au
 (F) - 0,38um Au
 (G) - 0,76um Au
 (C) - 0,38um Au/Sn
 (H) - 0,76um Au/Sn

5 - Pin Length:

(S) - 3,2mm
 (A) - 12,0mm
 (B) - 6,0mm
 (C) - 7,9mm

6 - Profile:

(W) - 11,0mm

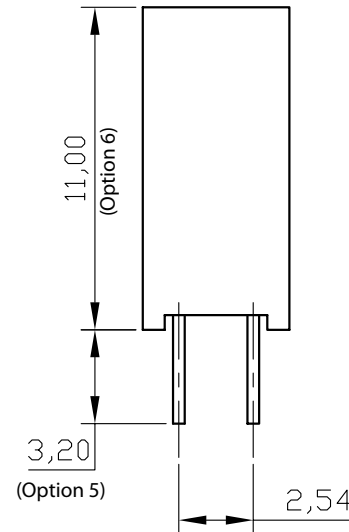
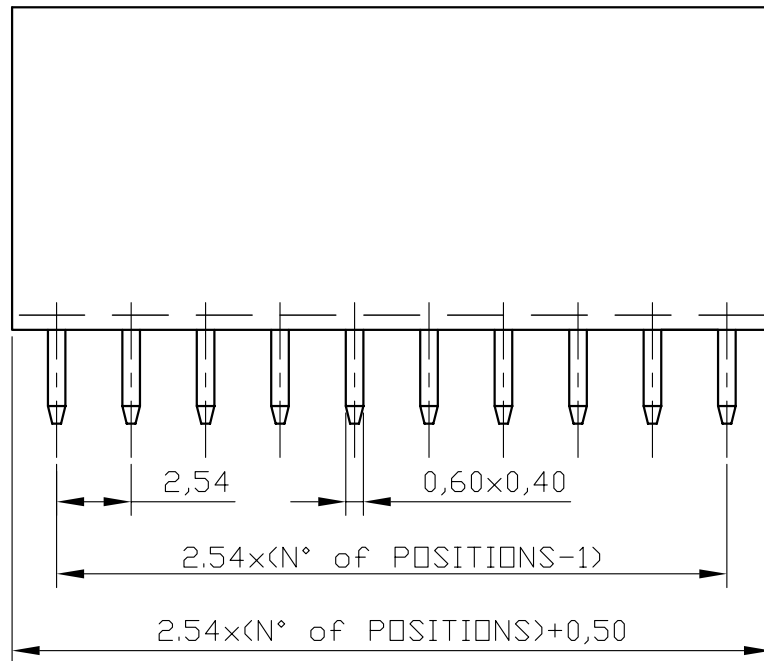
7 - (R) RoHS Compliant



MATRIX Tecnologia Ind. e Com. Ltda.

UNIT mm	SCALE 4:1	TITLE 2:54mm FEMALE HEADER HEIGHT 11.0mm 180°	DATE JULY 2007
TOLERANCE: ±0.25			APP. BY
		MATL	CHK. BY
		DWG. NO.	DR. BY DINO

REV	ECN. NO.	APP	DATE
A	MELHORIAS NO ASPECTO VISUAL		
B	CÓD. ANT.: MAT-X-D-R-X-S-W-X-R		01/2012



SPECIFICATIONS

Current Rating: 3Amps
 Insulation Resistance: 1000MΩ Min.
 Dielectric Withstanding: 600V AC/DC
 Contact Resistance: 20mΩ Max.
 Operating Temperature: -40°C to 105°C

MATERIALS

Contact Material: Phosphor Bronze
 Insulation Material: Polyester, UL 94V-0
 P.B.T

HOW TO ORDER: MAT [1][2][3][4][5][6][7]

1 - Nr. of Ways:

Single Row: 2 to 40
 Double Row: 2 to 80

2 - Row Version:

(S) - Single Row
 (D) - Double Row

3 - Pin Style:

(R) - Straight (180°)

4 - Terminal Plating:

(E) - Sn
 (D) - Flash Au
 (F) - 0,38um Au
 (G) - 0,76um Au
 (C) - 0,38um Au/Sn
 (H) - 0,76um Au/Sn

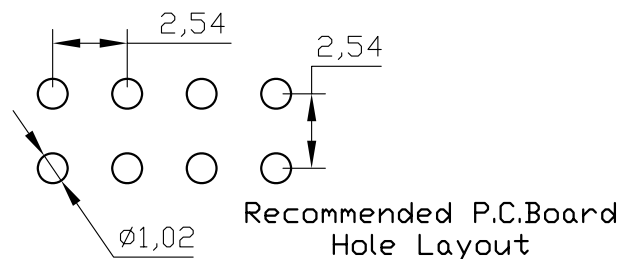
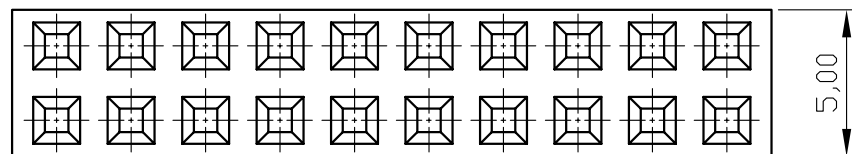
5 - Pin Length:

(S) - 3,2mm
 (A) - 12,0mm
 (B) - 6,0mm
 (C) - 7,9mm

6 - Profile:

(W) - 11,0mm

7 - (R) RoHS Compliant



MATRIX Tecnologia Ind. e Com. Ltda.

UNIT	SCALE	TITLE	DATE
mm	4:1	2:54mm FEMALE HEADER HEIGHT 11.0mm 180°	JULY 2007
TOLERANCE: ±0.25			APP. BY
		MATL	CHK. BY
		DWG. NO.	DR. BY DIEGO