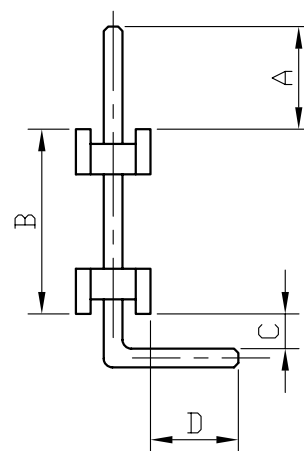
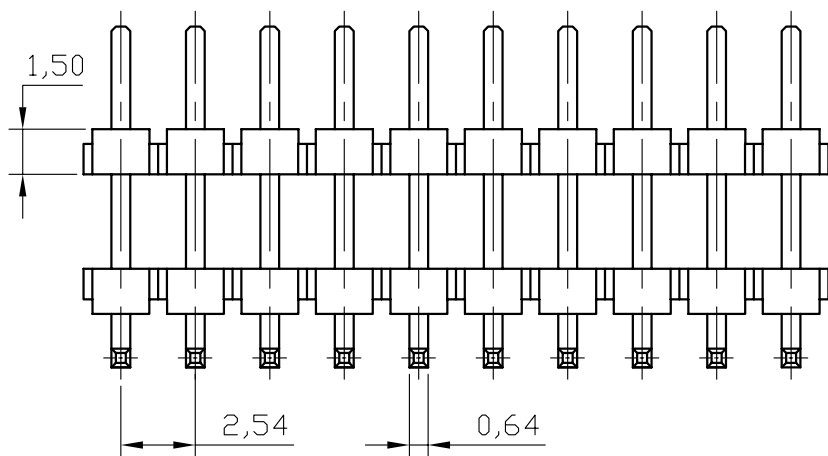


REV	ECN. NO.	APP	DATE
A	EDIÇÃO INICIAL		

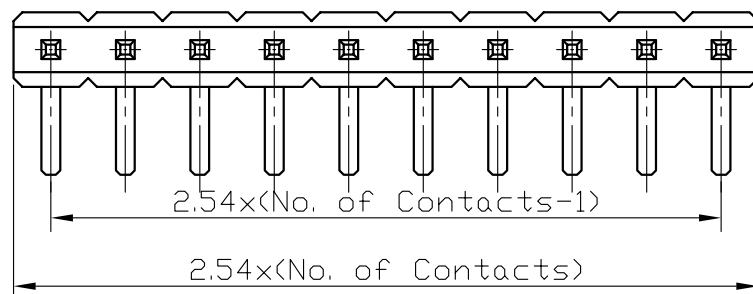


SPECIFICATIONS

Current Rating: 3A
 Operating Temperature: -55°C to 105°C
 Contact Resistance: 20Milliohms Max.
 Insulation Resistance: 100Megaohms Min.
 Withstanding Voltage: AC 100V RMS]

MATERIALS

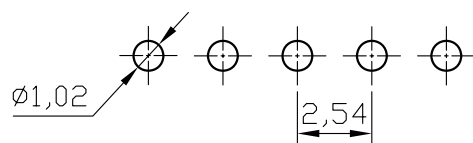
Housing: Thermoplastic UL 94V-0
 Contact: Copper Alloys




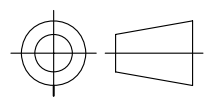
HOW TO ORDER: MCT[][S][N][][S][E][A][][R]

1 2 3 4 5 6 7 8

- | | |
|--|--|
| 1- Nr. of Ways
Single Row: 1 to 40
Double Row: 2 to 80 | 5- Profile:
(E)-1,5mm |
| 2- Row Version:
(S)-Single Row
(D)-Double Row | 6- Pin Type:
(A)-Type A
(B)-Type B |
| 3- Pin Style
(N)-90°
(R)-180° | 7- Options:
(T)-Tube Packing |
| 4- Terminal Plating:
(E)-Sn
(F)-FLASH Au
(A)-0,38um Au
(B)-0,76um Au
(C)-0,38um Au/Sn
(D)-0,76um Au/Sn | 8- (R)-RoHS Compliant |



RECOMMENDED P.C.B LAYOUT

 MATRIX Tecnologia Ind. e Com. Ltda.			
UNIT mm	SCALE 4:1	TITLE 2,54mm MCT H=1,5mm SINGLE ROW 90°	DATE AUGUST 2007
TOLERANCE: ±0.25			APP. BY
		MATL	CHK. BY
		DWG. NO.	DR. BY DIEGO