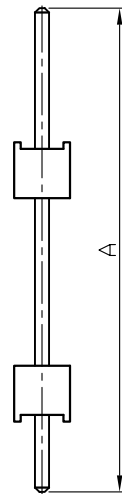
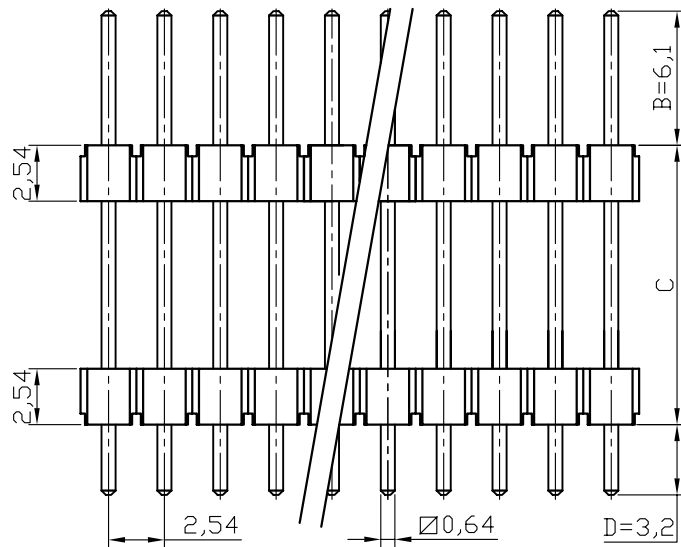
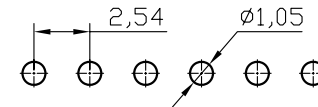


REV	ECN. NO.	APP	DATE
A	EDIÇÃO INICIAL		

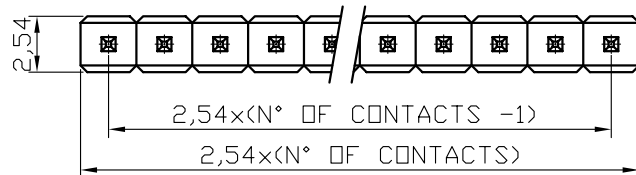


SPECIFICATIONS

Current Rating: 3 Amps
 Dielectric Withstanding: AC 500V
 Operating Temperature: -40°C to +105°C
 Max Processing Temp: 230° for 30~60 seconds
 (260° for 10 seconds)



P.C. Board Layout



HOW TO ORDER:
MCT[][S][R][][][][R]
1 2 3 4 5 6 7

- 1- Nr. of Ways
 Single Row: 1 to 40
 Double Row: 2 to 80
- 2- Row Version:
 (S)-Single Row
 (D)-Double Row
- 3- Pin Style
 (N)-90°
 (R)-180°
- 4- Terminal Plating:
 (E)-Sn
 (F)-FLASH Au
 (A)-0,38um Au
 (B)-0,38um Au/Sn
 (D)-0,76um Au
 (C)-0,76um Au/Sn
- 5- Table
- 6-Options:
 (T)-Tube Packing
- 7- (R)-RoHS Compliant

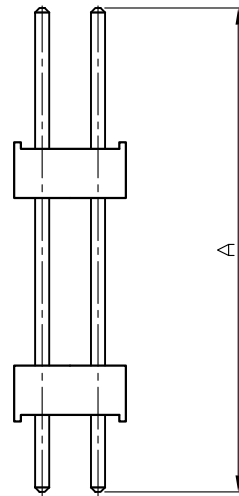
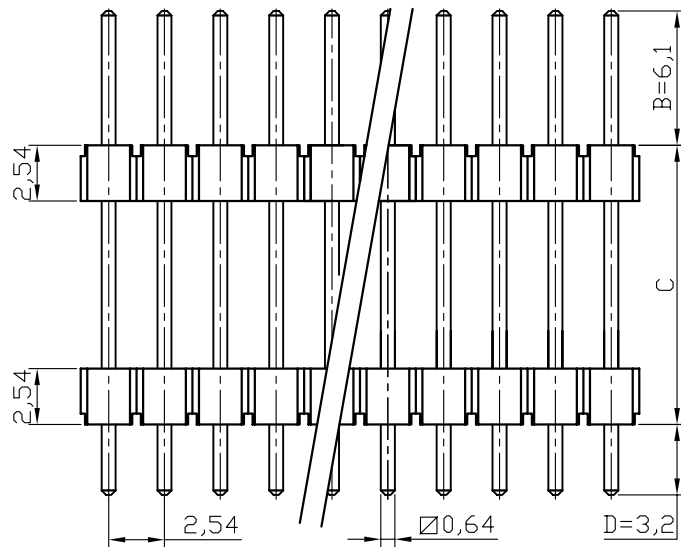
TABLE	
STYLE	DIMENSION A
B	22,00
T	25,00
W	30,00
V	35,00
X	40,00



MATRIX TECNOLOGIA IND. E COM. LTDA.

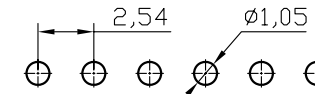
UNIT mm	SCALE 3:1	TITLE MCT 2,54mm SINGLE ROW 180°	DATE SEPTEMBER 2007
TOLERANCE: ±0.25		APP. BY	
		MATL	CHK. BY
		DWG. NO.	DR. BY DINO

REV	ECN. NO.	APP	DATE
A	EDIÇÃO INICIAL		

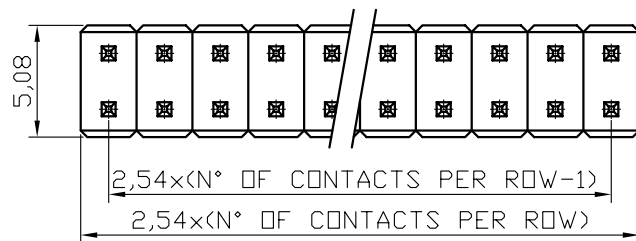


SPECIFICATIONS

Current Rating: 3 Amps
 Dielectric Withstanding: AC 500V
 Operating Temperature: -40°C to +105°C
 Max Processing Temp: 230° for 30~60 seconds
 (260° for 10 seconds)



P.C. Board Layout



HOW TO ORDER:
MCT[][D][R][][][][R]
1 2 3 4 5 6 7

- 1- Nr. of Ways
 Single Row: 1 to 40
 Double Row: 2 to 80
- 2- Row Version:
 (S)-Single Row
 (D)-Double Row
- 3- Pin Style
 (N)-90°
 (R)-180°
- 4- Terminal Plating:
 (E)-Sn
 (F)-FLASH Au
 (A)-0,38um Au
 (B)-0,38um Au/Sn
 (D)-0,76um Au
 (C)-0,76um Au/Sn
- 5- Table
- 6- Options:
 (T)-Tube Packing
- 7- (R)-RoHS Compliant

TABLE	
STYLE	DIMENSION A
B	22,00
T	25,00
W	30,00
V	35,00
X	40,00



MATRIX TECNOLOGIA IND. E COM. LTDA.

UNIT mm	SCALE 3:1	TITLE MCT 2,54mm DOUBLE ROW	DATE SEPTEMBER 2007
TOLERANCE: ±0.25		180°	APP. BY
		MATL	CHK. BY
		DWG. NO.	DR. BY DINO