

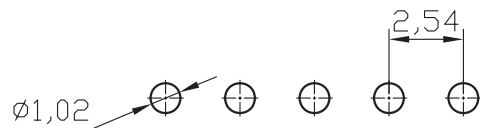
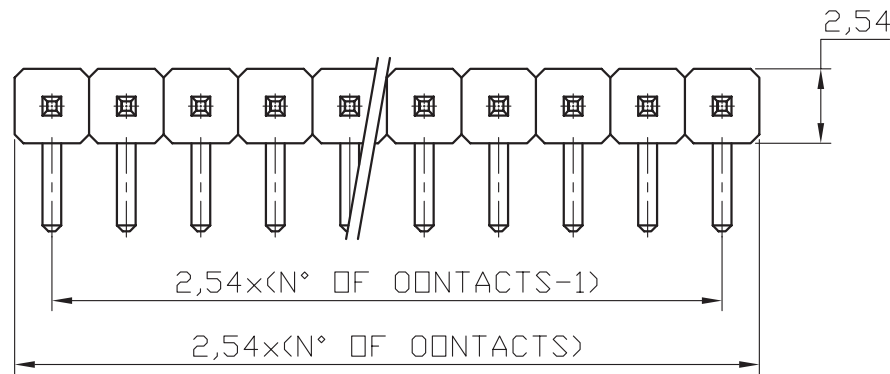
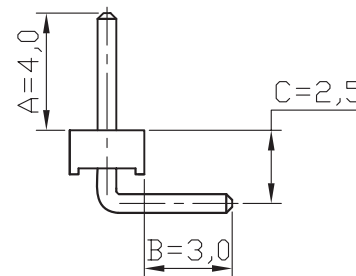
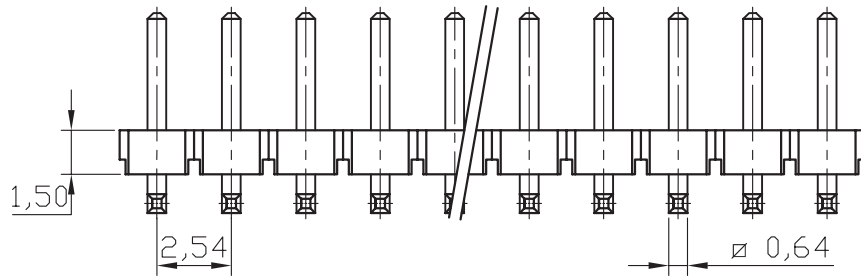
REV	ECN. NO.	APP	DATE
A	EDIÇÃO INICIAL		

SPECIFICATIONS

Current: 3A
 Operating Temperature: -55°C to 105°C
 Contact Resistance: 20 MilliΩ Max.
 Insulation Resistance: 1000 MegaΩ Min.
 Withstanding Voltage: AC 1000V RMS

MATERIAL

Housing: Thermoplastic UL 94V-0
 Contact: Copper Alloys



Recommended P.C.B. Layout

HOW TO ORDER:
PIN[][S][N][][S][F][][][R]
1 2 3 4 5 6 7 8

- 1- Nr. of Ways
 Single Row: 1 to 40
 Double Row: 2 to 80
- 2- Row Version:
 (S)-Single Row
 (D)-Double Row
- 3- Pin Style
 (N)-90°
- 4- Terminal Plating:
 (E)-Sn
 (F)-FLASH Au
 (A)-0,38um Au
 (B)-0,76um Au
 (C)-0,38um Au/Sn
 (D)-0,76um Au/Sn
- 5-(F) Profile: 1,50mm
- 6- Type:
 (A)-Type A
 (B)-Type B
- 7- Option:
 (T)-Tube Packing
- 8- (R)-RoHS Compliant



MATRIX Tecnologia Ind. e Com. Ltda.

UNIT mm	SCALE 4:1	TITLE 2,54mm PIN HEADER HEIGHT 1,5mm 90° SINGLE ROW	DATE JULY 2007
TOLERANCE: ±0.25			APP. BY
		MATL	CHK. BY
		DWG. NO.	DR. BY DINO