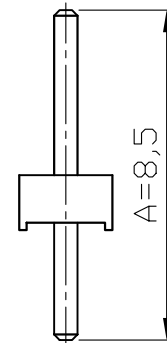
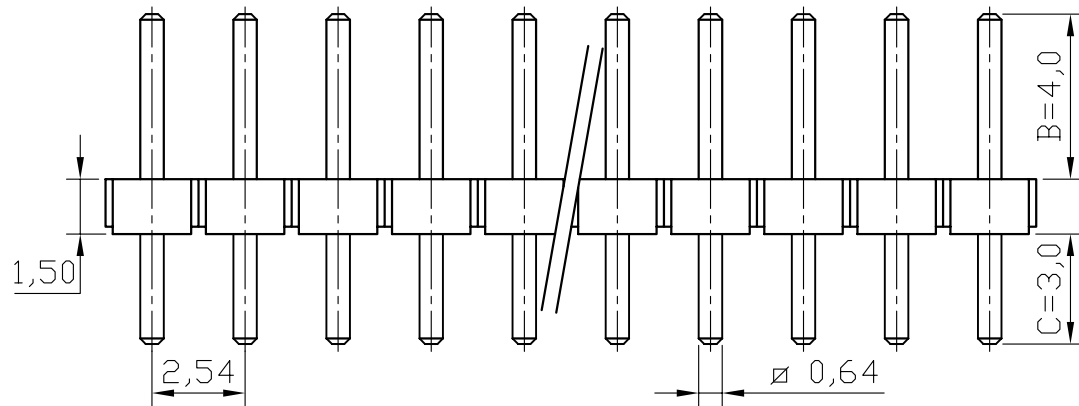


REV	ECN. NO.	APP	DATE
A	EDIÇÃO INICIAL		



SPECIFICATION

Current: 3A
 Operating Temperature: -55°C to 105°C
 Contact Resistance: 20 Milliohms Max.
 Insulator Resistance: 1000Megaohms Min.
 Withstanding Voltage: AC 1000V RMS

MATERIAL

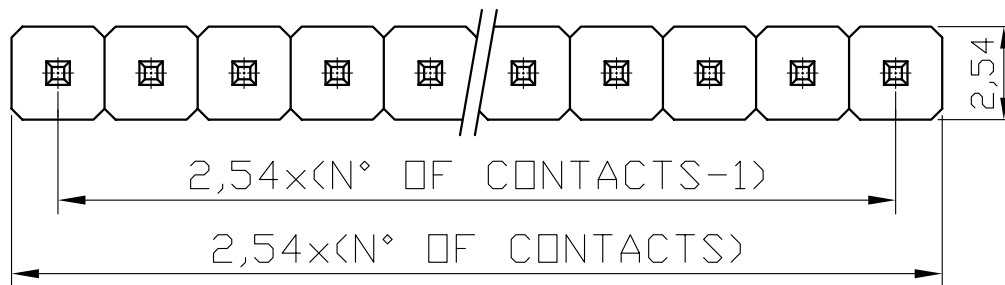
Housing: Thermoplastic UL94V-0
 Contact: Copper Alloys

HOW TO ORDER:

PIN[][S][R][][S][F][][R]

1 2 3 4 5 6 7

- 1- Nr. of Ways
Single Row: 2 to 40
- 2- Row Version:
(S)-Single Row
- 3- Pin Style
(N)-90°
(R)-180°
- 4- Terminal Plating:
(E)-Sn
(F)-FLASH Au
(A)-0,38um Au
(B)-0,76um Au
(C)-0,38um Au/Sn
(D)-0,76um Au/Sn
- 5- Profile:
(F)-1,50mm
- 6- Options:
(T)-Tube Packing
- 7-(R) RoHS Compliant



MATRIX Tecnologia Ind. e Com. Ltda.

UNIT mm	SCALE 5:1	TITLE 2,54mm PIN HEADER HEIGHT 1,5mm 180° SINGLE ROW	DATE DECEMBER 2010
TOLERANCE: ±0.25			APP. BY
		MATL	CHK. BY
		DWG. NO.	DR. BY Gabriel Zandoná