

## Wi-Temp L or XL

The Wi-Temp L or XL series is a two input thermistors based temperature sensor with wireless mesh network communication output. This module is compatible with the Mesh Gate L or XL.



### Sensor characteristic

$T_{PM}$	Temperature measuring range	- 30 .. 230	°F
		- 34 .. 110	°C
$\epsilon_T$	Temperature error	± 1	°F
		± 0.56	°C
<b>G</b>	Sensitivity	± 0.18	°F
		± 0.1	°C
	Sensor cable length	2.4	m
	Interval setting	5 .. 30	minutes

### Power

External DC input voltage	4.5 to 30	V
Internal DC input voltage	4.5	V

### Radio characteristic

RF frequency range	2405 .. 2480	MHz
Standards	IEEE 802.15.4	
◆ Programmable in 16 channels		
◆ Channel spacing 5 MHz		
◆ Unlicensed ISM band worldwide		
◆ Data rate	250	kbps
(Wi-Temp L) range to Mesh Gate or Mesh Node (indoor, line of sight)	140	m
(Wi-Temp XL) range to Mesh Gate or Mesh Node (indoor, line of sight)	260	m

### General data

$T_A$	Ambient operating temperature (90 % rH)	- 10 .. + 55	°C
$T_S$	Ambient storage temperature	- 25 .. + 85	°C
<b>m</b>	Mass with 3 x AA batteries	170	g
	without batteries	80	g
	RF certification	CE, FCC, IC	

### Features

- Wireless communication on license free 2.4 GHz-transmit RF power max EIRP: 10 dBm (10 mW) for L, 18 dBm (60 mW) for XL
- 2 thermistors 10 kΩ thermal resistor, encapsulated probe immune to moisture and condensation.

### Advantages

- Fast & easy mounting
- Compact
- Ideal for retrofit applications
- Battery powered: 3 X AA size
- Gateway interface: RS232 Modbus RTU
- Internal integrated antenna.

### Applications

- Energy audit & diagnostic
- Building energy management.

### Application domain

- Energy & Automation.

**Note:** <sup>1)</sup> Batteries are not included in the 5 year warranty.  
LEM is not liable for any improper use of the batteries (i.e. leakage etc.).

## Wi-Temp L or XL

### Typical battery life time

The battery life depends on Interval setting and other environmental parameters.

The values below are indicative and may change according to usage conditions and battery choice.

Interval setting: 300 s (5')

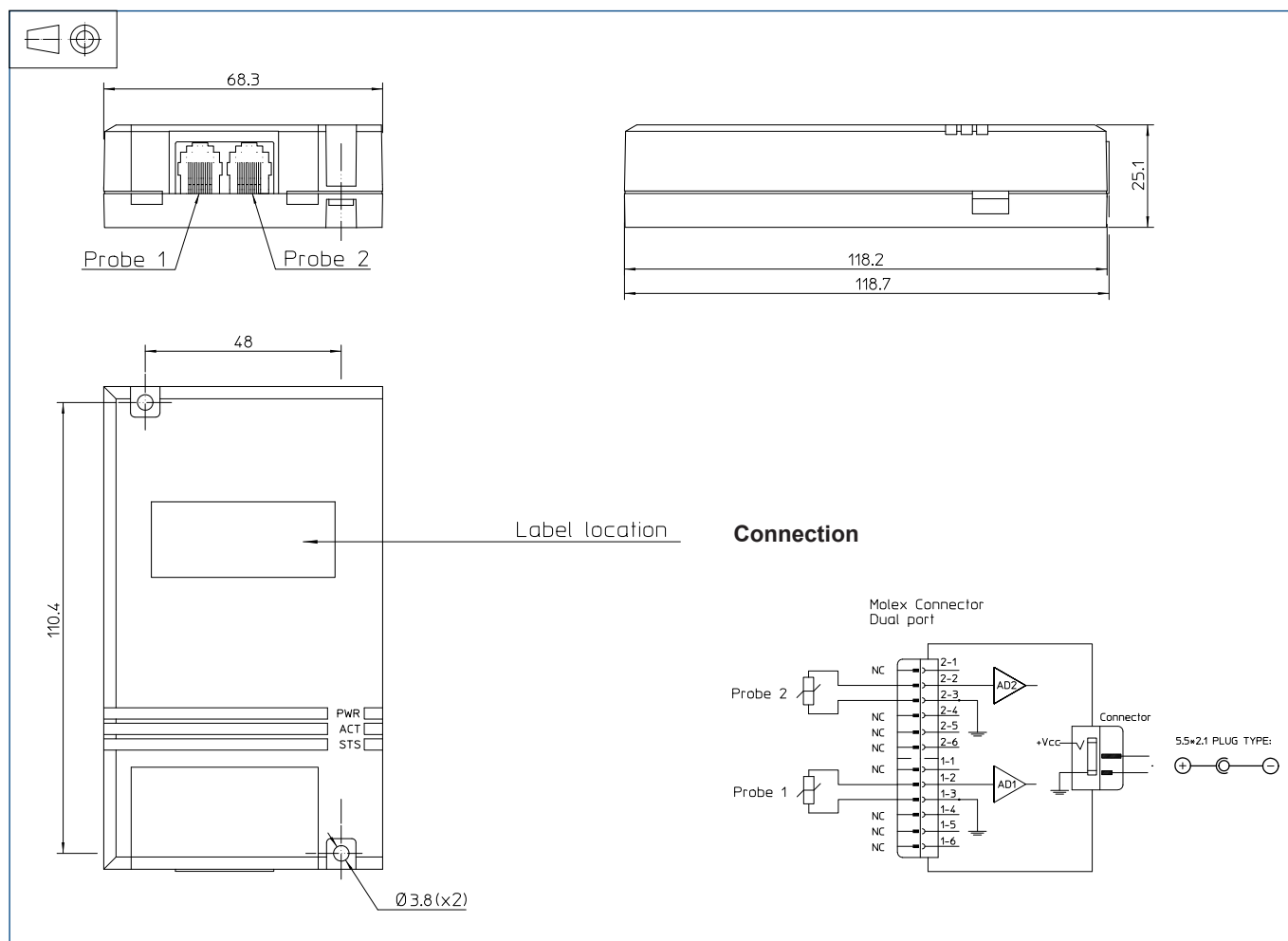
Battery capacity: 2160 mAh (AA size Alkaline, 80 % x 2700 mAh)

Battery life time (theoretical): 9 years

Important notice: alkaline batteries have typical shelf life of 7 years @ 21°C, 80 % of initial capacity.

For more long-term applications, alkaline batteries may be replaced, to advantage, by Lithium batteries (typical shelf life of 15 years @ 21°C, 90 % of initial capacity).

## Dimensions Wi-Temp L or XL (in mm.)



## Power Supply: AC Adaptor

Please order separately the AC Power Supply according to the table below.

Reference name	Description	LEM code
AC Adaptor EU	AC Power Supply for EU	90.D2.98.004.0
AC Adaptor UK	AC Power Supply for UK	90.D2.98.005.0
AC Adaptor US/JP	AC Power Supply for US & Japan	90.D2.98.003.0