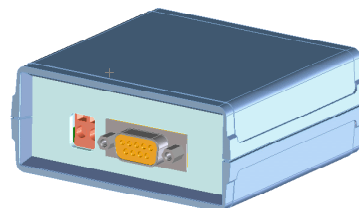


S-BUS Converter

The S-Bus converter is designed to convert the LEM proprietary Sentinel & I-Link communication bus (S-Bus & I-Bus) to RS-232 interface.



Electrical data

V_c	DC supply voltage	$\pm 10\%$	+ 24	V
I_c	Max. DC current consumption		100	mA
	Transmission speed		9600	bps

Interfaces

RJ10 connectors for the S-Bus	2
D- Sub 9 female connector for RS232 interface	1
2 terminal connector for power supply	1
LED power indication	1

General data

T_A	Ambient operating temperature	- 10 .. + 70	°C
T_S	Ambient storage temperature	- 25 .. + 85	°C
	Altitude	up to 2000	m
	Max relative humidity without condensing	85	%
m	Mass	105	g
	Standards	EN 50178: 1997 EN 50121-5 EN 61000-4-16 EN 61010-1: 2001	

Isolation characteristics

This device is a SELV ¹⁾ device.

It must use an external power supply complying with limited energy circuit criteria and SELV conditions.

Features

- Interface to the Sentinel
- Interface with OEM equipment
- LED status indicators
- Immunity to electrical interference.

Applications

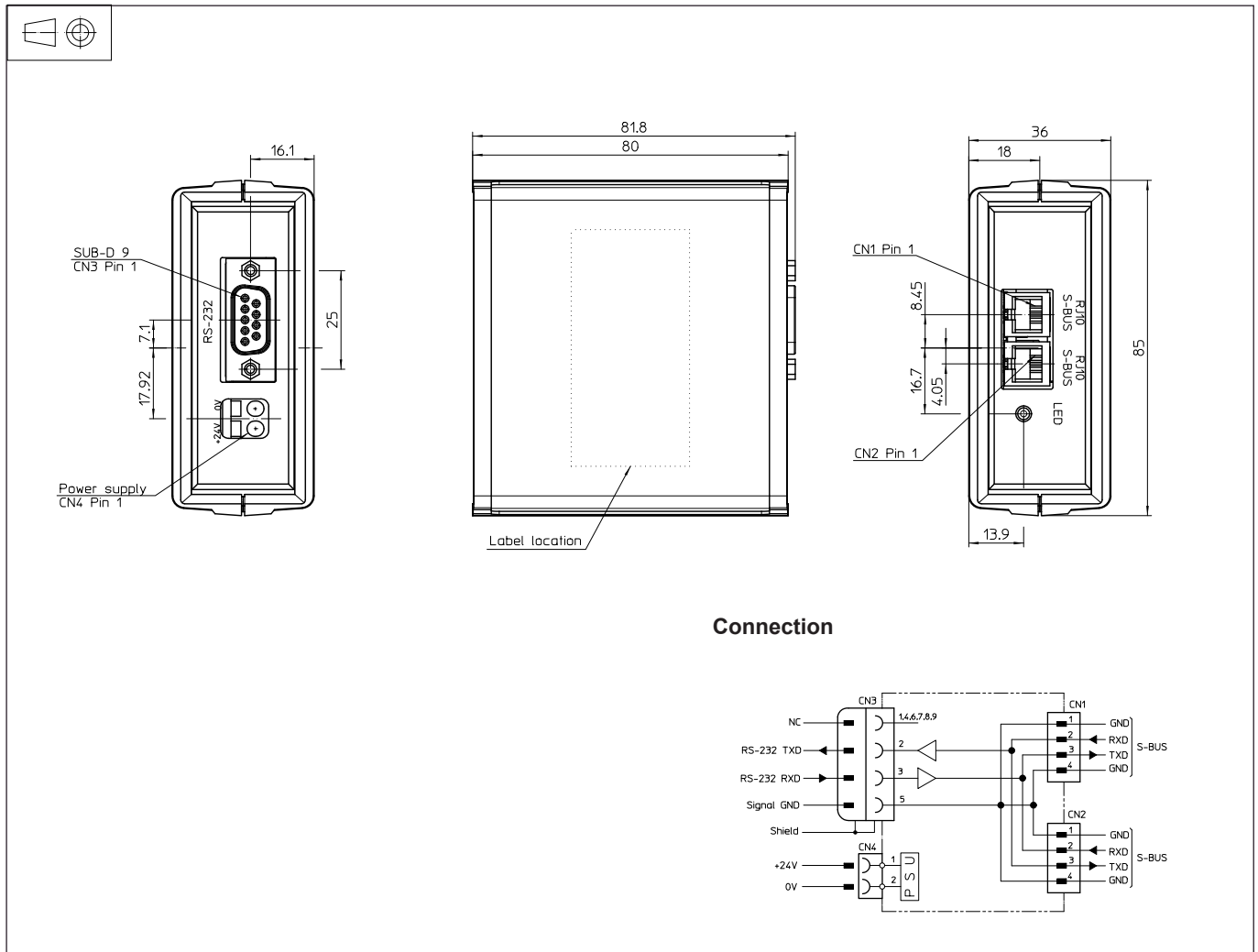
- UPS
- Telecommunications
- Battery supplied applications
- Utilities
- Fire & Safety system
- Remote monitoring.

Application Domains

- Energy & Automation and Industrial.

Note: ¹⁾ SELV: Safety Extra Low Voltage.

Dimensions S-Bus Converter (in mm.)



Connection

Mechanical characteristics

- General tolerance ± 0.3 mm
- Module fastening
Use the double sided tape (included). LEM does not guarantee the performance of the adhesive tape. For harsh condition of vibration and/or environment, please use an appropriate mechanical device to fasten the S-BUS converter.

Safety



This transducer must be used on electric/electronic equipment with respect to applicable standards and safety requirements in accordance with the manufacturer's operating instructions.