

AUTOMOTIVE CURRENT TRANSDUCER

HAB 60-S/SP5



Introduction

The HAB Family is best suited for DC, AC or pulsed currents measurement in high power and low voltage automotive applications. It contains galvanic isolation between the primary circuit (high power) and the secondary circuit (electronic circuit).

The HAB family gives you a choice of having different current measuring ranges in the same housing (from ± 20 A up to ± 100 A).

Features

- Open Loop transducer using the Hall effect sensor
- Low voltage application
- Unipolar + 5 V DC power supply
- Primary current measuring range ± 60 A
- Maximum rms primary current limited by the busbar, the magnetic core or the ASIC temperature $T^\circ < + 150^\circ\text{C}$
- Operating temperature range: $- 40^\circ\text{C} < T^\circ < + 125^\circ\text{C}$
- Output voltage: full ratio-metric (in gain and offset).

Advantages

- Good accuracy for high and low current range
- Good linearity
- Low thermal offset drift
- Low thermal gain drift
- Hermetic package.

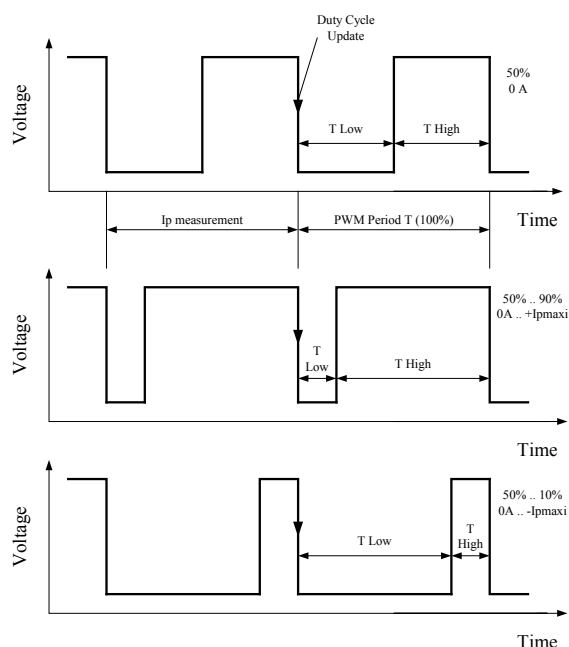
Automotive applications

- Battery Pack Monitoring
- Hybrid Vehicles
- EV and Utility Vehicles.

Principle of HAB xxx-S Family

The transducer uses open loop hall effect technology. It provides a **Pulse Width Modulated** output Signal proportional to the magnetic Induction B generated by the primary current I_p to be measured.

The **PWM** principle is described as follow:



$$PWM \text{ period } T_{period} = T_{High} + T_{Low}$$

$$PWM \text{ frequency} = \frac{1}{T_{period}} = 125 \text{ Hz}$$

$$DutyCycle(\%) = \frac{T_{High}}{T_{period}} \times 100$$

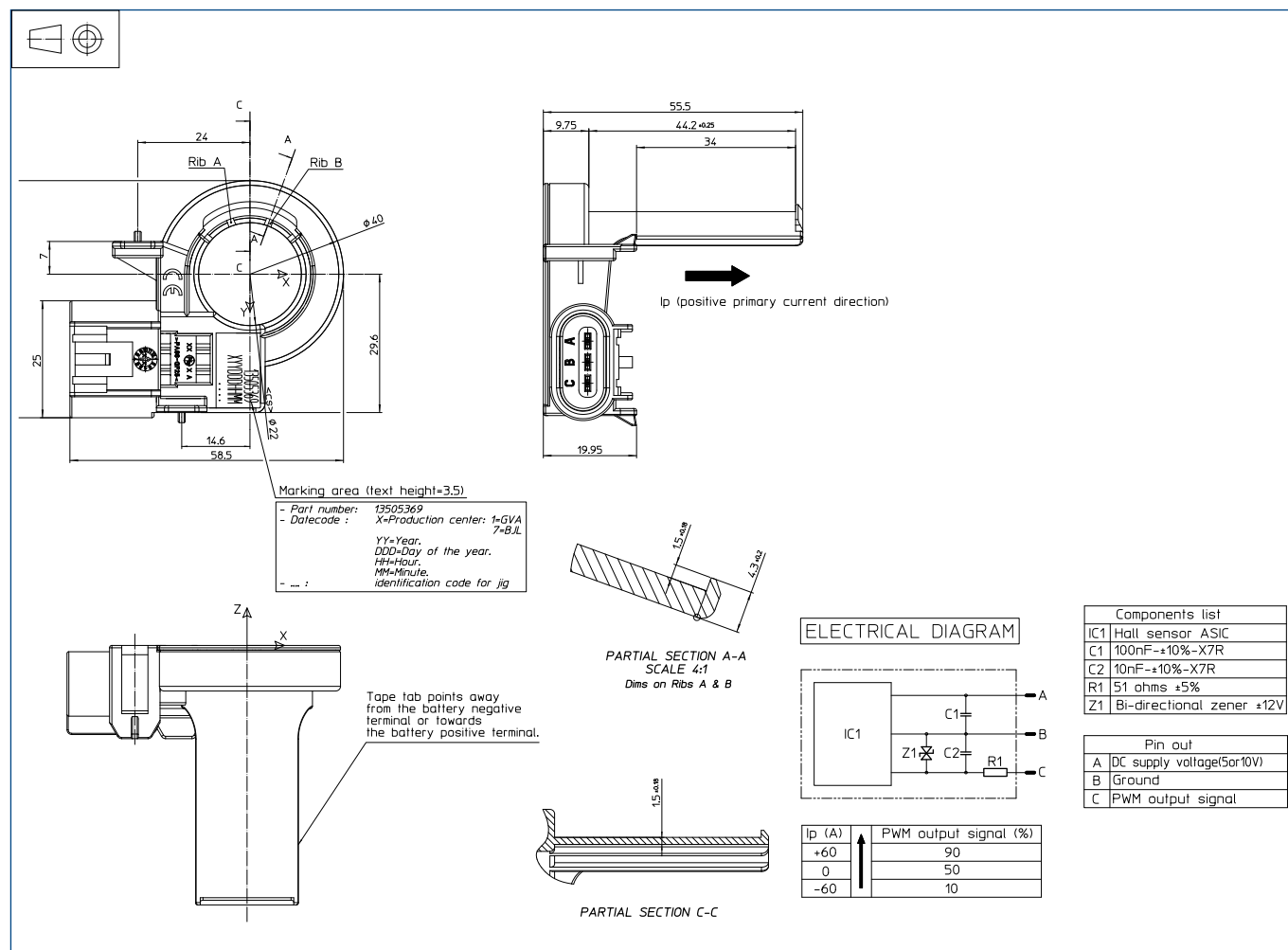
$$DutyCycle(\%) = 50\% + G \times I_p \text{ with } G = \text{Sensitivity } (\%/A)$$

The **PWM** period T_{period} starts on the falling edge of the output signal. The output signal of the duty cycle given during the T_{period} is the image of the primary current during the $T_{period} - 1$ period.

Page 1/5

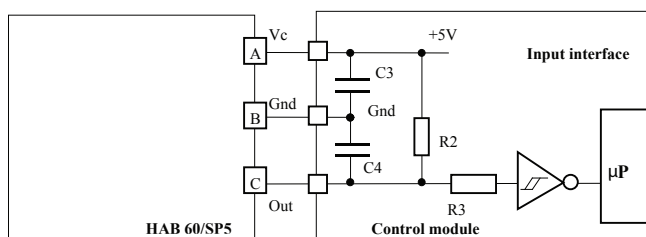
HAB 60-S/SP5

Dimensions HAB 60-S/SP5 family (in mm.)



Bill of materials

- Plastic case PA 66-GF25
- Pins Brass tin plated
- m 25 g



Control module components		
C3	100 nF X7R	
C4	1 nF X7R	Optional
R2	4.7 kΩ	Optional
R3	High impedance protection	Optional

The optional components are needed if current sensor is outside the control module circuit.

HAB 60-S/SP5

Absolute maximum ratings (not operating)

PARAMETER	Symbol	Min	Max	Unit
Maximum primary current	I_P		Infinite	A
Supply voltage	V_C	- 8.5	8.5	V
Supply voltage (over voltage $t < 1$ min)		- 14	14	V
Current consumption ($t < 1$ min)	I_C		50	mA
Output voltage ($t < 1$ min)	V_{out}	- 5	14	V
Output voltage over supply voltage	$V_{out} - V_C$		2	V
Output current	I_{out}	- 10	10	mA
Output short-circuit duration	T_c		10	min
Ambiant storage temperature	T_S	- 40	125	°C

Operating conditions

PARAMETER	Symbol	Min	Typical	Max	Unit
Supply voltage	V_C	4.5	5.00	5.5	V
Supply voltage (accurate range)	V_C	4.75	5.00	5.25	V
Pull up load resistor	R_L	2.2	4.7		K Ω
Capacitive loading	C_L			1	nF
Ambient operation temperature	T_A	- 40	25	125	°C
Ambient operation temperature (accurate range)	T_A	- 10	25	65	°C

Operating characteristics

PARAMETER	Symbol	Min	Typical	Max	Unit
Primary current nominal range	I_{PN}	-60		60	A
Maximum current measuring range (clamping)	I_{PM}	-67		67	A
Current consumption	I_C	-	7.5	10	mA
Output PWM frequency	f_{PWM}	105	125	145	Hz
Output duty cycle sensitivity	G		0.667		%/A
Output duty cycle @ $I_P = 0$	D_{OUT}		50		%
Output duty clamping low		4	5	6	%
Output duty clamping high		94	95	96	%
Duty cycle resolution			0.0125		%
Power-up time to reach valid duty cycle				25	ms
Setting time after over load				25	ms
Output voltage high (pull up = 4.7 K Ω)	V_{OUTH}	$V_C - 0.2$			V
Output voltage low (pull up = 4.7 K Ω)	V_{OUTL}			0.2	V
Output internal resistance	R_{out}		50	100	Ω
Output PWM rise time	t_{rise}			10	μ s
Output PWM fall time	t_{fall}			10	μ s

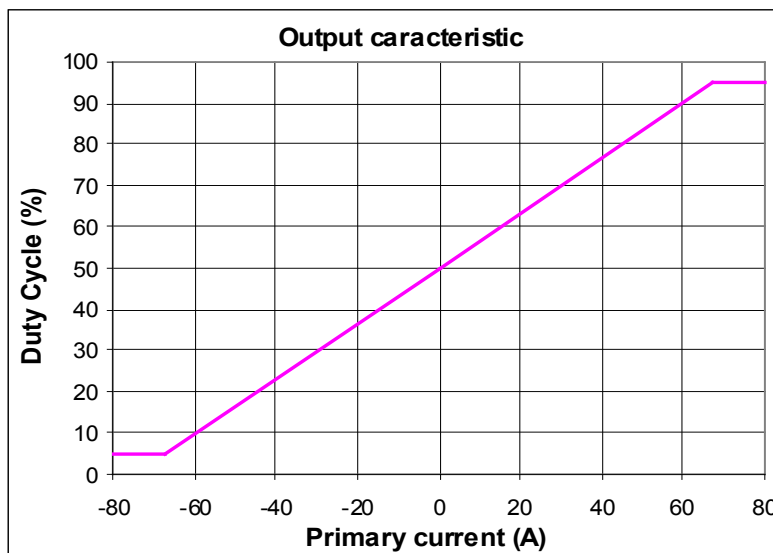
HAB 60-S/SP5

Operating temperature

PARAMETER	Symbol	Min	Typical	Max	Unit
Electric offset current @ accurate temperature range	I_{OE}	-0.2	0.075	0.2	A
Electric offset current @ full temperature range		-0.3	0.15	0.3	A
Magnetic offset current	I_{OM}		0.05		A
Output resolution			0.03		A
Sensitivity error @ accurate temperature range	ε_G	-2		2	%
Sensitivity error @ full temperature range		-3		3	%
Linearity error	ε_L		0.2		%

HAB 60-S/SP5

Operating temperature

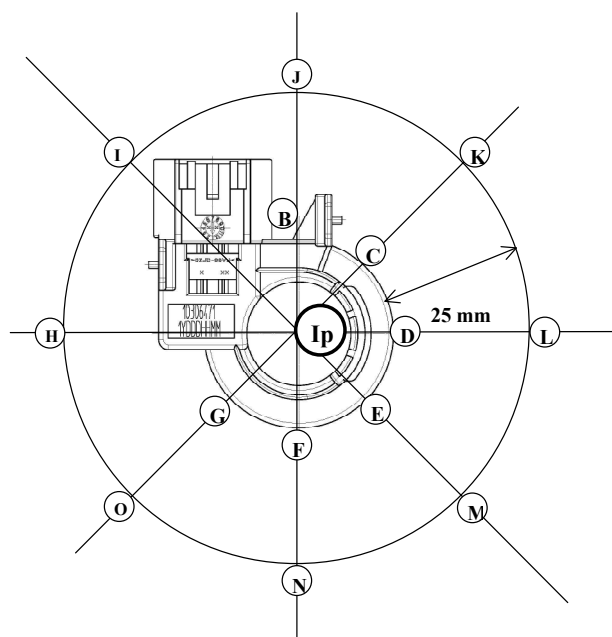


Influence of the external magnetic field

Test conditions:

- transducer sample: HAB 60-S
- diameter of the disturbing conductor: 6 mm
- dimension of the primary bus-bar: 6 x 2 x 200 mm
- tested at ambient temperature

Influence of the external magnetic field



Position	curve 1	curve 2	curve 3	curve 4	curve 5	curve 6
I_p (A)	0	0	-60	-60	60	60
I_x (A)	60	-60	60	-60	60	-60

