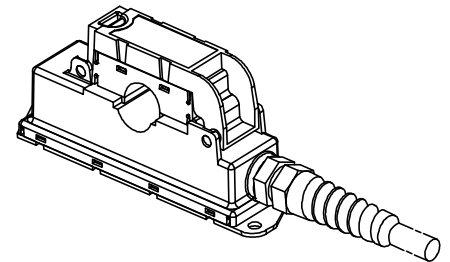


PointSenz PCM 30-P/SP1 is optimised for the electronic measurement of unipolar DC currents, with a galvanic isolation between the primary (high power) circuit and the secondary (electronic) circuit.



Electrical data

I_{PN}	Primary nominal DC	30	A
I_{PM}	Primary current, measuring range	0 .. + 30	A
I_{OUT}	Analogue output current @ $I_p = 0$	4	mA
I_{OUT}	Analogue output current @ $+ I_p$	20	mA
R_M	Measuring resistance	100 .. 500	Ω
V_C	Supply voltage ¹⁾ ($\pm 10\%$)	+ 24	V
I_C	Current consumption (max) ²⁾	50	mA

Accuracy - Dynamic performance data

X	Accuracy ^{3), 4)} ($5\% + I_p \dots + I_p$) @ $T_A = +25^\circ\text{C}$, $V_C = +24\text{ V}$	± 1.0	% of I
	Position sensitivity relative to centre reading (max)	± 1.5	% of I
ϵ_L	Linearity error ⁴⁾ ($0 \dots + I_p$)	± 0.2	% of I_p
I_o	Offset current @ $I_p = 0$, $T_A = 25^\circ\text{C}$ (max)	$+4 \pm 0.3$	mA
I_{OM}	Magnetic offset current @ $I_p = 0$ and specified R_M , after an overload of $3 \times I_{PN}$	± 0.04	mA
I_{OT}	Temperature variation of I_{OE} $T_A = -25 \dots + 70^\circ\text{C}$	± 0.06	mA/ $^\circ\text{C}$
TCG	Temperature coefficient of G $T_A = -25 \dots + 70^\circ\text{C}$	± 0.05	%/ $^\circ\text{C}$
t_r	Response time to 90 % of I_p step	< 30	μs
di/dt	di/dt accurately followed	> 50	A/ μs
BW	Frequency bandwidth (- 3 dB)	DC .. 1	kHz

General data

T_A	Ambient operating temperature	- 25 .. + 55	$^\circ\text{C}$
T_S	Ambient storage temperature	- 25 .. + 85	$^\circ\text{C}$
	Relative humidity $T_A = 40^\circ\text{C}$	95	%
m	Mass	155	g
	Standards	EN 50155	
		EN 50121-4	

Features

- Closed loop sensor using Hall Effect
- Panel mounting
- Split core design for easy installation
- Isolated plastic case to UL 94-V0
- Reverse polarity protected.

Advantages

- Very good linearity
- Excellent accuracy
- Current overload capability
- No insertion losses.
- Non - contact measurement (does not need a safety case)

Applications

- Points condition monitoring
- Signal light indication
- Battery supplied applications
- Uninterruptable Power Supplies (UPS).

Application domain

- Track Side.

Notes: ¹⁾ Reverse polarity protection

²⁾ Including I_{OUT}

³⁾ Excludes electrical offset

⁴⁾ Includes linearity with the conductor in the centre of the aperture.

Current Transducer PCM 30-P/SP1

Isolation characteristics

V_b	Rated isolation voltage rms ⁵⁾	200	V
		Min	
dCp	Creepage distance	12	mm
dCl	Clearance distance	10	mm
CTI	Comparative Tracking Index (Group IIIa)	175	

Note: ⁵⁾ Overvoltage category II, Pollution degree 2.

Safety



This transducer must be used in electric/electronic equipment with respect to applicable standards and safety requirements in accordance with the manufacturer's operating instructions.



Caution, risk of electrical shock

When operating the transducer, certain parts of the module can carry hazardous voltage (eg. primary busbar, power supply).

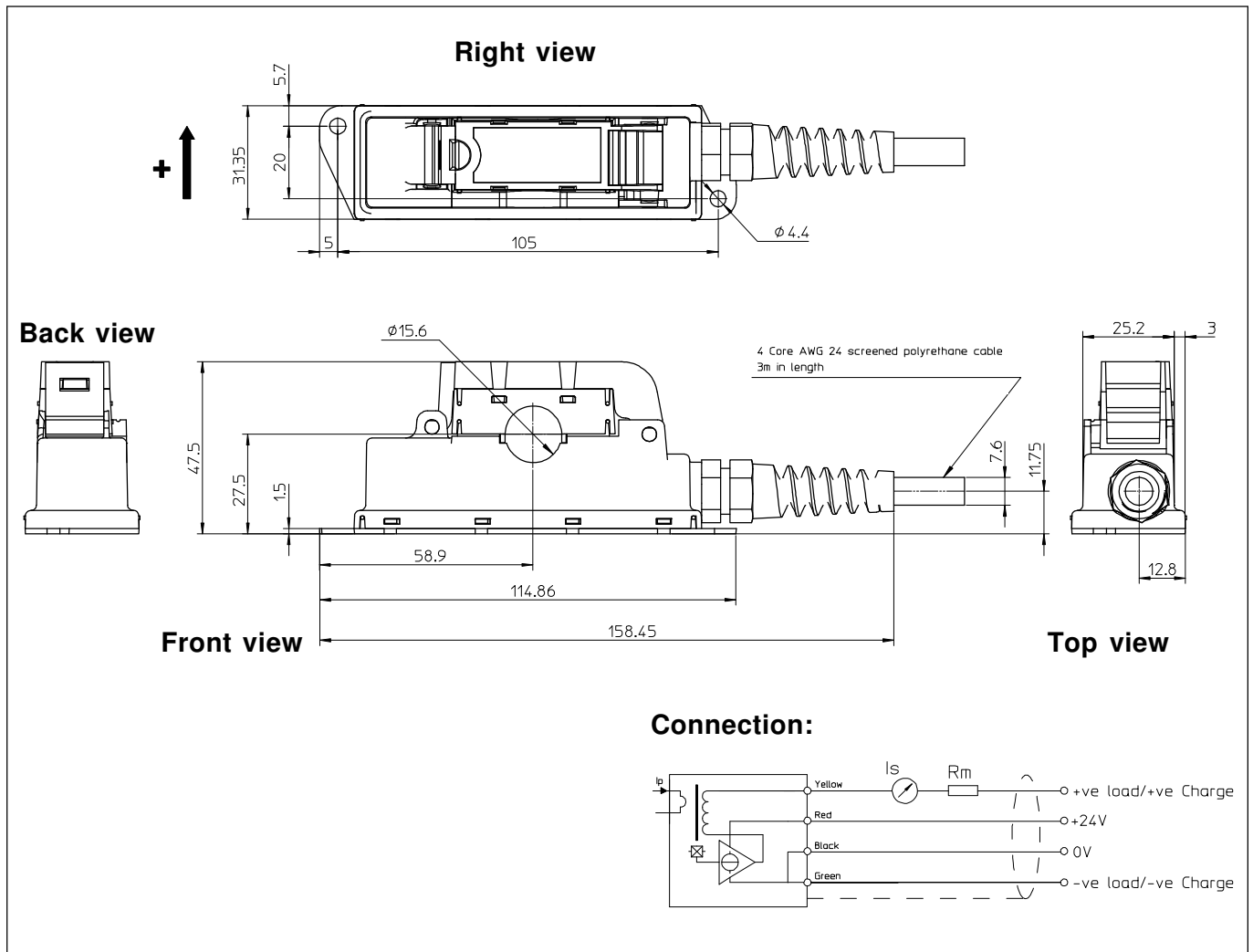
Ignoring this warning can lead to injury and/or cause serious damage.

This transducer is a built-in device, whose conducting parts must be inaccessible after installation.

A protective housing or additional shield could be used.

Main supply must be able to be disconnected.

Dimensions PCM 30-P/SP1 (in mm. 1 mm = 0.0394 inch)



Mechanical characteristics

- General tolerance ± 0.5 mm
- Primary through-hole $\phi 15$ mm
- Connection of secondary Via a 4 core screened polyurethane cable 3 m, Halogen free
- Enclosure UL 94-V0 rated plastic

Remarks

- I_{OUT} is positive when I_p flows in the direction of the arrow.
- Temperature of the primary conductor should not exceed 90°C .
- This unit is intended for direct mounting in trackside applications. It should only be installed or removed from isolated hazardous live conductors or unisolated hazardous live conductors which are switched off.
- Connections between the transducer and the customers power supply and output monitoring equipment should be made with screened cable.