

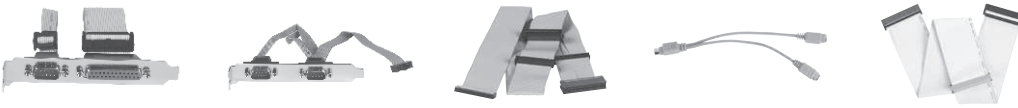
Cable List



Part Number	59093201000E	59308300000E	59312260000E	59312260010E	59312260020E
Cable Description	AX93201 to AX93202 LAN cable, L=20mm	IEE1394 cable w/ bracket, P= 2.0mm, L=330mm	VGA cable, DB15P, P=1.25, 12P, L=200mm	COM port x 2 w/ bracket, P=1.25, L=250mm	Audio cable w/ bracket, P=1.25, L=450mm



Part Number	59327200000E	59380000300E	59380010300E	59380402010E	59380402020E
Cable Description	VGA+PS/2 cable, P=1.27 x 2.54, L=300mm	COM port x 2 w/ bracket, P=1.27 x 2.54, L=300mm	COM port x 1 w/ bracket, P=1.27 x 2.54, L=300mm	COM port cable w/ bracket, P=2.54, L=300mm	COM port cable x1, P=2.0, L=300mm



Part Number	59380502000E	59380703000E	59381400000E	59381560000E	59382601000E
Cable Description	COM + printer cable w/ bracket	COM port x 2 w/ bracket P=2.54	FDD cable, P=2.54, L=300mm	Mini DIN Y-Cable for PS/2 K/B+M/S	ULTRA DMA66 IDE cable 40P 455mm



Part Number	59382620000E	59382631000E	593826A0000E	59383600000E	593836A0000E
Cable Description	COM port x 1w/ bracket, P=2.0, L=300mm	2 x USB 2.0 wafer cable w/ bracket 180mm	SATA singal cable 500mm	Audio cable w/ bracket	USB cable, 5 x 2P, P=2.0, L=180mm



Part Number	593836A0010E	593836A0030E	59384500000E	59384500100E	59384500200E
Cable Description	40-40-40 IDE cable L=310+155mm	SATA power cable 150mm	COM + printer cable w/ bracket P=2.0, L=250mm	Audio cable w/ bracket, P=2.0 L=450mm	COM x 2 w/ bracket, P=2.0, L=250mm



Part Number	59384500300E	59386831000E	59386832000E	59397300000E	59397300110E
Cable Description	FDD flat cable "2.54 to 2.0 pitch" 320mm	USB cable w/ bracket, USB x 2, 2 x 5P, P=2.54, L=175mm	Wafer 2.00mm 6P to PS/2 cable, L=200mm	VGA cable, L=180mm	USB cable w/ bracket, L=215mm



Part Number	59397300200E	59402010000E	59408000010E	59408000090E	59408660010E
Cable Description	K/B & M/S cable, 2 x 5, P=2.0, L=300mm	ATX power cable 10P L=150mm	FFC 26P cable, L=210mm	FFC 26P cable, L=290mm	FFC 41P cable, L=60mm



Part Number	59408660020E	59408660100E	59408660110E	59412260000E	59412260010E
Cable Description	FFC 41P cable, L=60mm reverse	RCA cable+wafer 2P 2.0mm, L=300mm RC	S Video cable + wafer 4P 2.0mm, L=300mm	ATX power cable, 4P+5P+6P, L=150mm	PS/2 cable, P=1.25, 6P to PS/2, L=150mm



Part Number	59420040000E	59482630000E	59484500010E	594F2012900E	59908355000E
Cable Description	ATX power cable, 6P+4P, L=150mm	Printer port cable, P=2.0, L=270mm	44-44-40 pin IDE cable L=200mm+200mm	2 ports of IEEE1394a cables w/ bracket 2.54-pitch	Power cable 8-pin P=130mm



Part Number	59070213000E	59040131000E	59050203000E	59091501000E
Cable Description	DP to VGA cable L=85mm	DP to DVI cable L=210mm	DP to HDMI cable L=185mm	DP to DP cable L=1500mm