

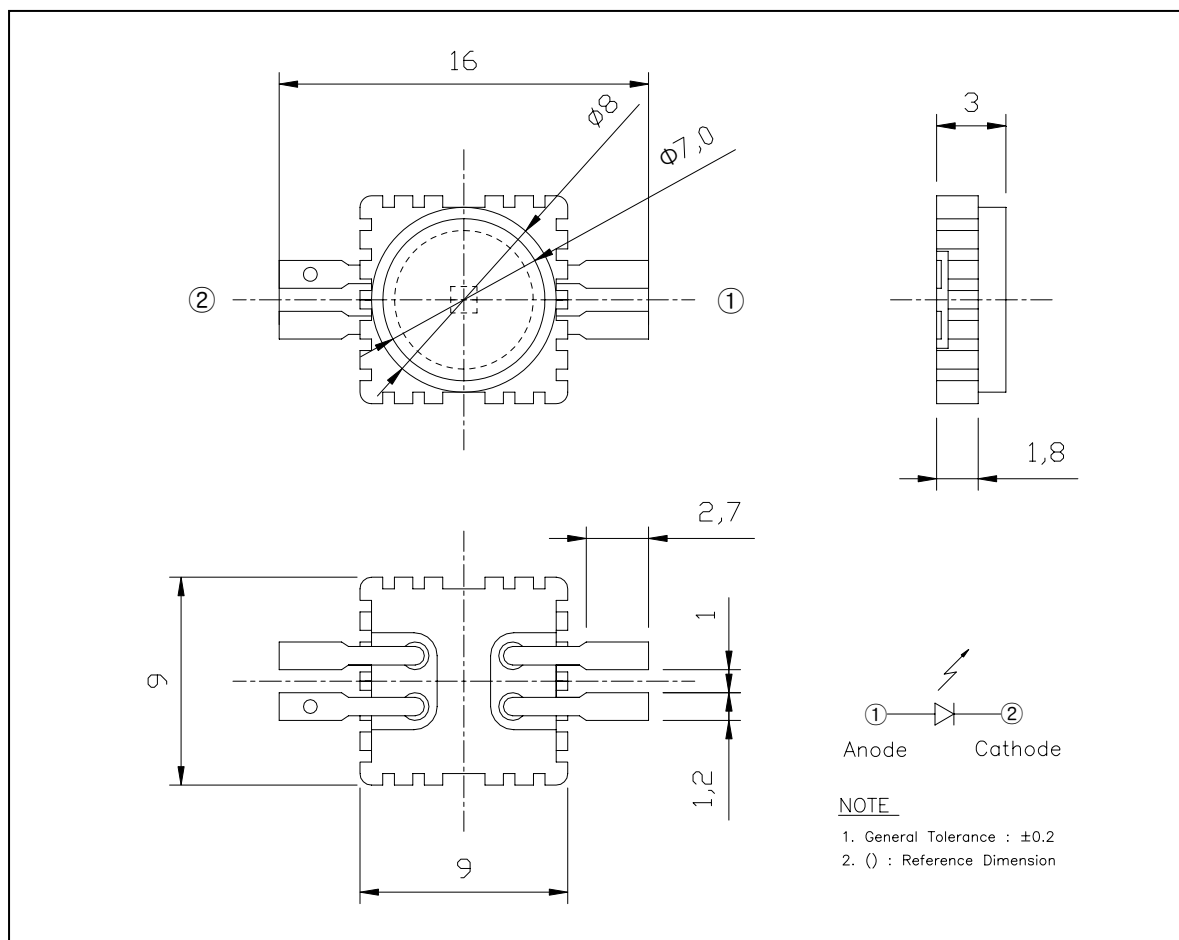
1. Features

- ◆ Surface Mount Package (9.0 L × 9.0 W × 3.0 H [mm])
- ◆ Operation Temperature from -30℃ to +85℃
- ◆ Typical Total Radiant Flux(Φ_e) : 60lm for White @ IF=350mA.

2. Applications

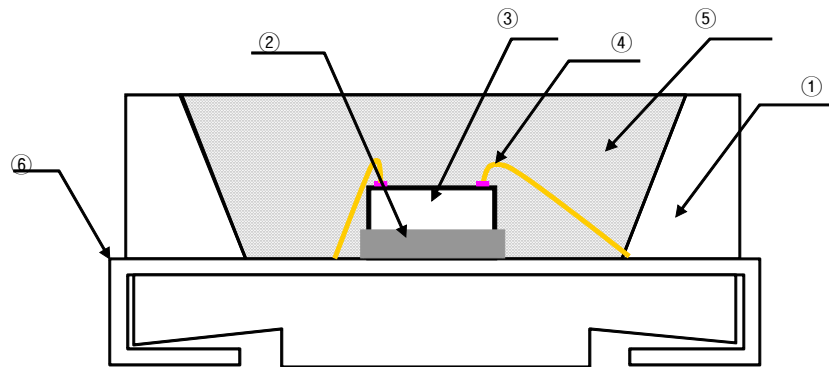
- ◆ Car Interior Illumination Lights
- ◆ Indoor Display Modules
- ◆ Indicators for Electrical Appliances

3. Outline Dimensions and Material Descriptions



The contents of this data sheet are subject to change without advance notice for the purpose of improvement. When using this product, would you please refer to the latest specifications.

◆ Material Descriptions



No.	ITEM	Material
①	Frame	Al
②	Paste	Clear Epoxy
③	Blue LED Chip	InGaN/Al ₂ O ₃
④	Wire	Au
⑤	Encapsulant	Silicone
⑥	Electrode	Ag Plated Cu

4. Absolute Maximum

(Ta=25°C)

Parameter	Symbol	Ratings	Unit
Forward current	I _F	350	mA
Pulse forward current *1	I _{FP}	1	A
Power dissipation	P _D	1000	mW
Operating temperature	T _{opr.}	-30 ~ +85	°C
Storage temperature	T _{stg.}	-40 ~ +100	°C
Soldering Temperature *2	T _{sol.}	260	°C

* 1. I_{FP} Measured under duty ≤ 1/10 @ 1KHz

* 2. Soldering time ≤ 5 Sec

5. Electrical / Optical Characteristics

(Ta=25°C)

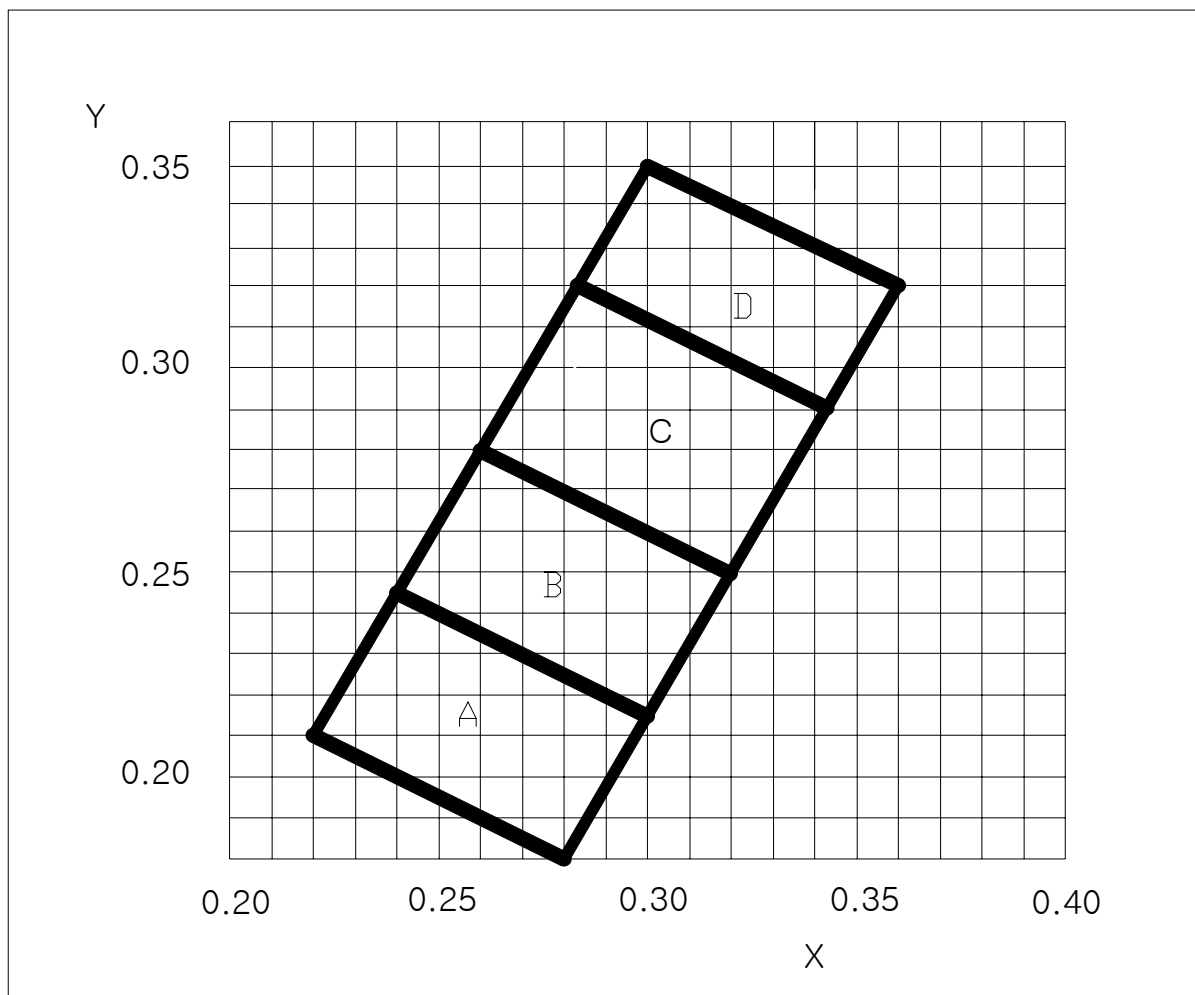
Parameter	Symbol	Conditions	Min	Typ	Max	Unit
Forward voltage	V _F	I _F = 350 mA	-	3.5	-	V
Power	P	I _F = 350 mA	-	60	-	lm
Color Coordinate	x	I _F = 350mA	0.264	-	0.356	-
	y		0.248	-	0.385	
Half angle	2Δθ _{1/2}	I _F = 350 mA	-	140	-	deg.

The contents of this data sheet are subject to change without advance notice for the purpose of improvement.
When using this product, would you please refer to the latest specifications.

6. Chromaticity Ranks

Ta= 25 °C

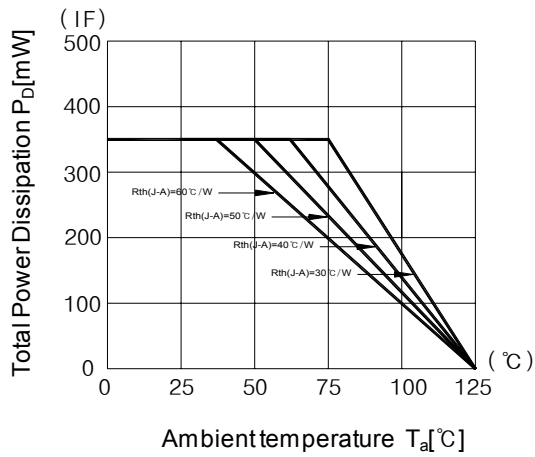
Rank	x	1	2	3	4
	y				
A	x	0.280	0.220	0.298	0.240
	y	0.189	0.210	0.214	0.244
B	x	0.298	0.240	0.319	0.259
	y	0.214	0.244	0.250	0.279
C	x	0.319	0.259	0.343	0.283
	y	0.250	0.279	0.291	0.320
D	x	0.343	0.283	0.360	0.301
	y	0.291	0.320	0.320	0.348



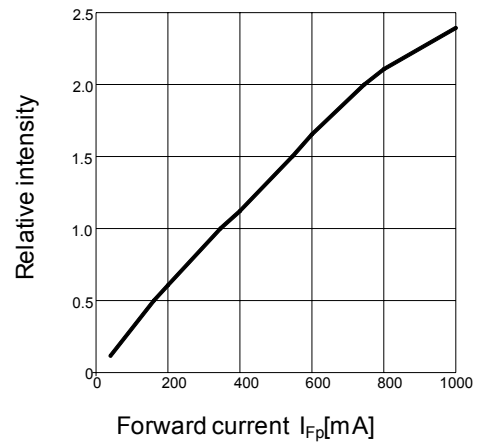
The contents of this data sheet are subject to change without advance notice for the purpose of improvement.
When using this product, would you please refer to the latest specifications.

7. Characteristic Graphs

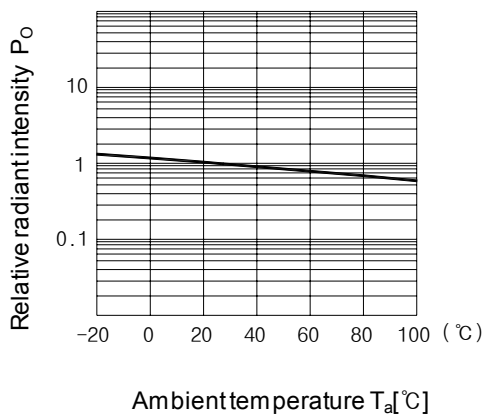
Forward current vs. Ambient temperature



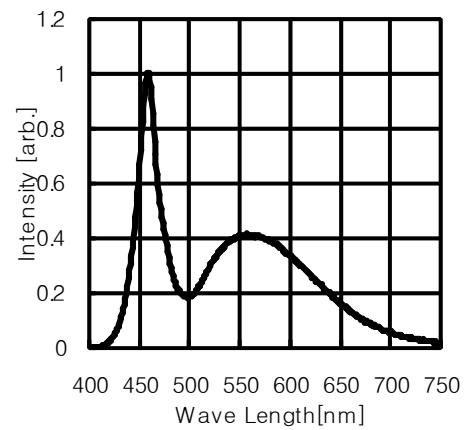
Radiant Intensity vs. Forward current



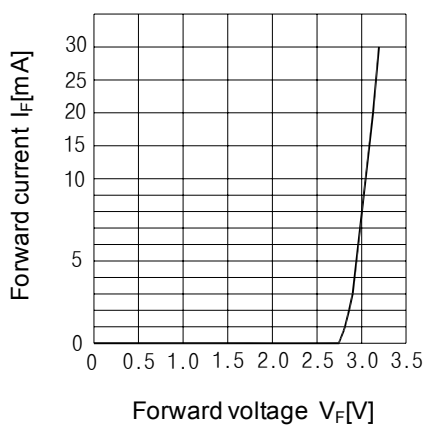
Relative radiant intensity vs. Ambient temperature



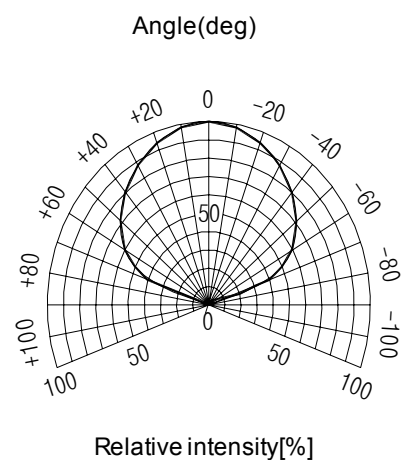
Relative intensity vs. Wavelength



Forward current vs. Forward voltage



Radiant Pattern



The contents of this data sheet are subject to change without advance notice for the purpose of improvement. When using this product, would you please refer to the latest specifications.