

## 600V, 15A ULTRAFAST RECOVERY RECTIFIERS

### Features

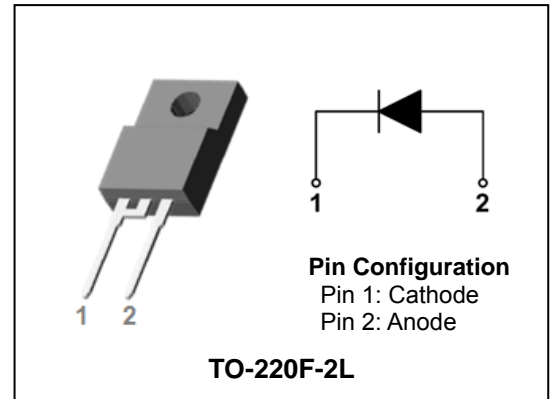
- High voltage and high reliability
- Ultrafast reverse recovery time
- High speed switching
- Low power loss and High efficiency
- Full lead (Pb)-free and RoHS compliant device

### Applications

- Switching power supply
- Power inverters
- Free-wheeling diode
- Power conversion system
- Motor drives

### Description

The SF15A600H is an ultrafast rectifier. It has a low forward voltage drop and reverse recovery time ( $t_{rr} < 35\text{ns}$ ). The device is intended for use as a free wheeling, clamping rectifier in a variety of switching power supplies and other power switching applications.



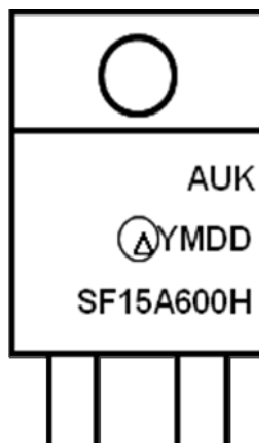
### Product Characteristics

$I_{F(AV)}$	15A
$V_{RRM}$	600V
$V_{FM} @ T_j=125^\circ\text{C}$	1.65V
$t_{rr}$	35ns

### Ordering Information

Device	Marking Code	Package	Packaging
SF15A600H	SF15A600H	TO-220F-2L	Tube

### Marking Information



AUK = Manufacture Logo

$\Delta$  = Control Code of Manufacture

YMDD = Date Code Marking

-. Y = Year Code

-. M = Monthly Code

-. DD = Daily Code

SF15A600H = Specific Device Code

## Absolute Maximum Ratings (Limiting Values)

Characteristic	Symbol	Value	Unit
Maximum repetitive reverse voltage Maximum working peak reverse voltage Maximum DC blocking voltage	$V_{RRM}$ $V_{RWM}$ $V_R$	600	V
Maximum average forward rectified current	$I_{F(AV)}$	15	A
Peak forward surge current 8.3ms single half sine-wave superimposed on rated load per diode	$I_{FSM}$	120	A
Storage temperature range	$T_{stg}$	-45 to +150	°C
Maximum operating junction temperature	$T_j$	150	

## Thermal Characteristics

Characteristic	Symbol	Value	Unit
Maximum thermal resistance junction to case	$R_{th(j-c)}$	4.0	°C/W

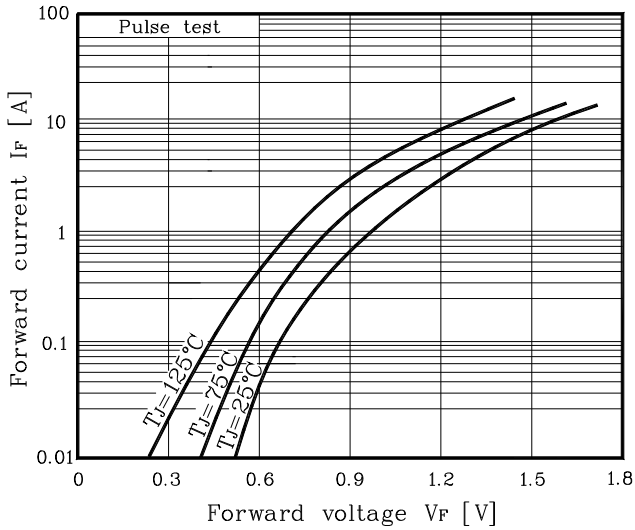
## Electrical Characteristics

Characteristic	Symbol	Test Condition	Min.	Typ.	Max.	Unit	
Peak forward voltage drop	$V_{FM}^{(1)}$	$I_F = 15A$	$T_j = 25^\circ C$	-	-	1.90	V
			$T_j = 125^\circ C$	-	-	1.65	
Reverse leakage current	$I_{RM}$	$V_R = V_{RRM}$	$T_j = 25^\circ C$	-	-	25	uA
			$T_j = 125^\circ C$	-	-	400	
Reverse recovery time	$t_{rr}$	$I_F = 1A, di/dt = -100 A/us$	-	-	35	ns	
Junction capacitance	$C_j$	$V_R = 10V_{DC}, f = 1MHz$	-	70	-	pF	

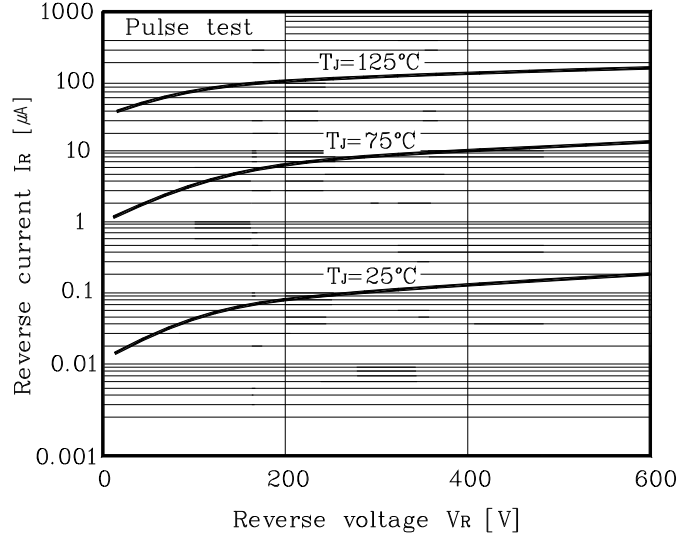
**Note :** (1) Pulse test :  $t_p \leq 380us$ , Duty cycle  $\leq 2\%$

## Electrical Characteristic Curves

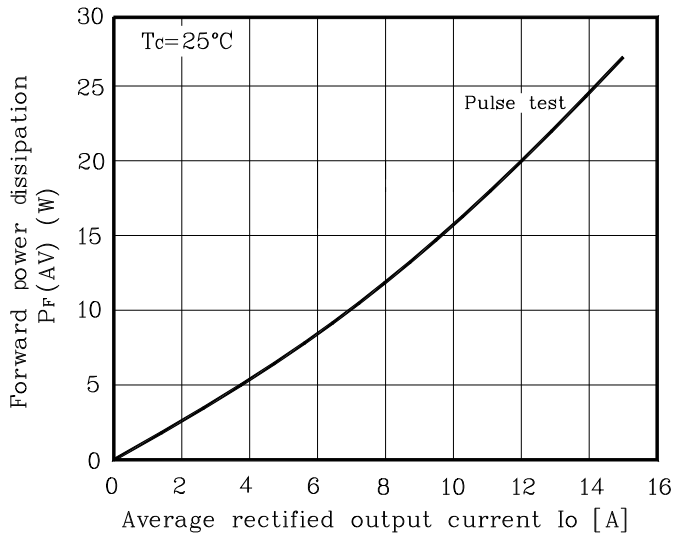
**Fig.1  $I_F - V_F$**



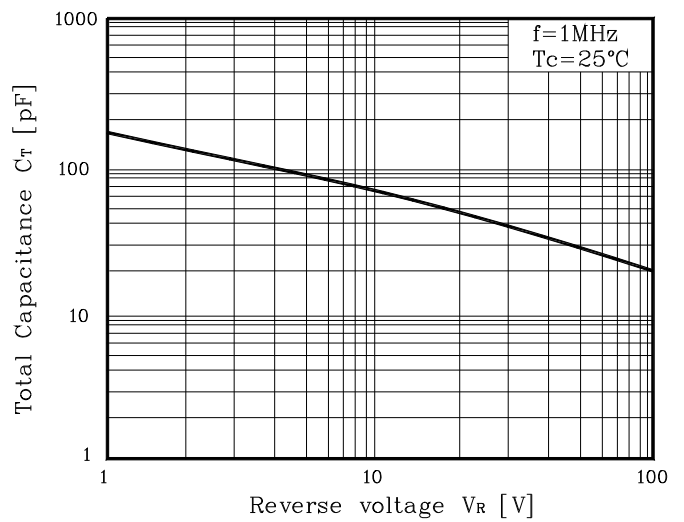
**Fig. 2  $I_R - V_R$**



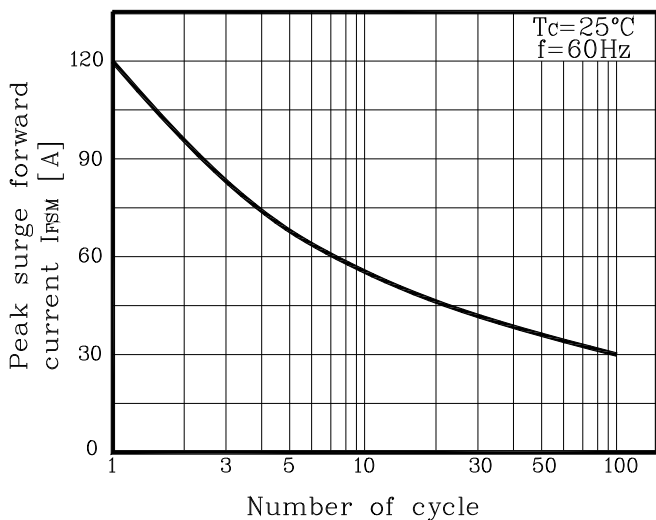
**Fig. 3  $P_F - I_O$**



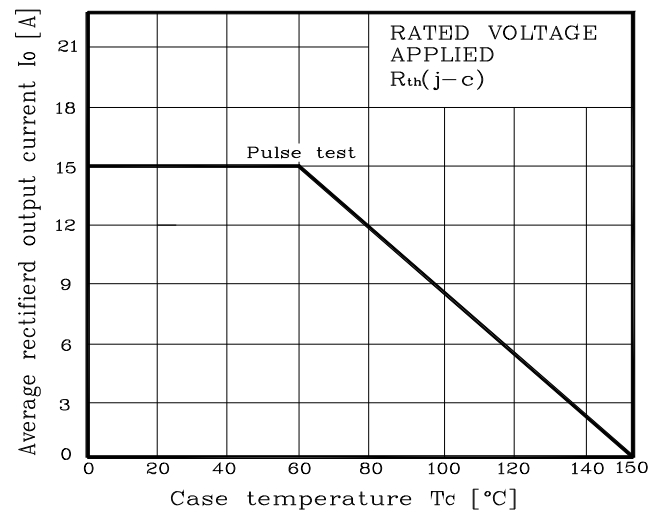
**Fig. 4  $C_J - V_R$**



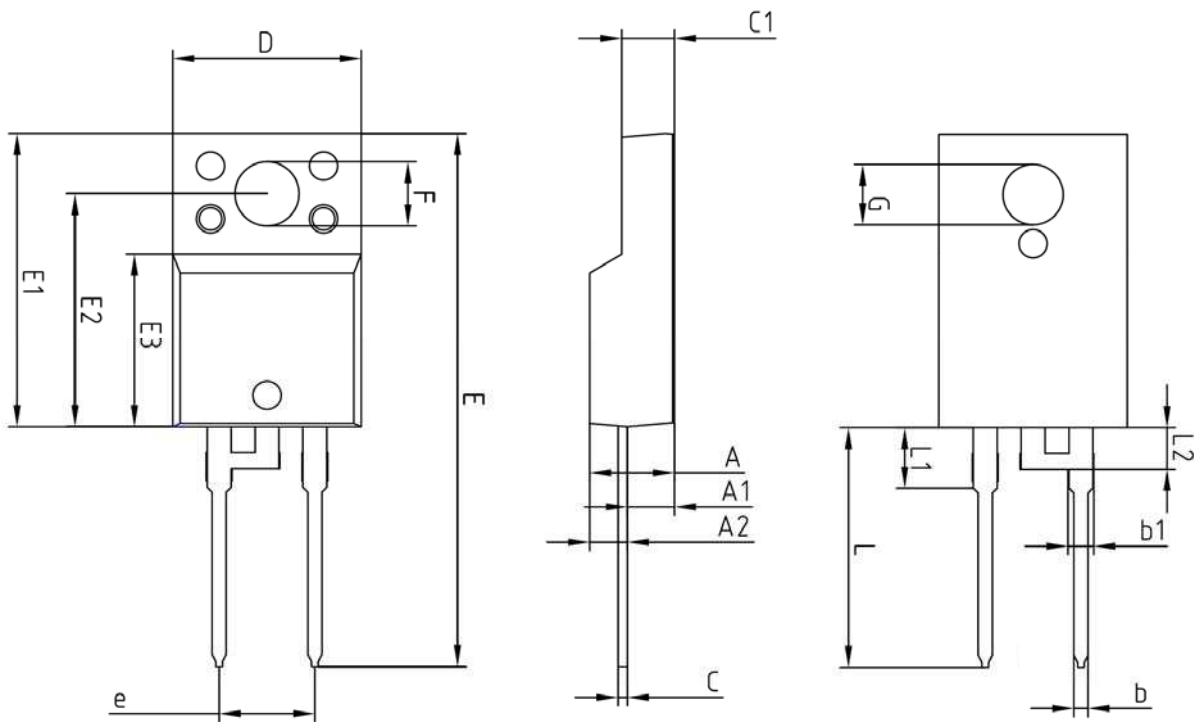
**Fig. 5  $I_{FSM} - \text{Number of cycle}$**



**Fig. 6  $I_O$  derating -  $T_c$**



## Package Outline Dimension (Unit: mm)



SYMBOL	MILLIMETERS			NOTE
	MINIMUM	NOMINAL	MAXIMUM	
A	—	—	4.60	
A1	2.45	2.50	2.55	
A2	1.95	2.00	2.05	
b	0.65	0.75	0.85	
b1	1.07	1.27	1.47	
C	0.40	0.50	0.60	
C1	2.70	2.80	2.90	
D	9.90	10.00	10.10	
E	28.00	—	28.60	
E1	15.50	15.60	15.70	
E2	12.30	12.40	12.50	
E3	9.15	9.20	9.25	
F	3.30	3.40	3.50	
G	3.10	3.20	3.30	
e	5.08 BSC			
L	12.40	—	13.00	
L1	3.46 BSC			
L2	2.21 BSC			

**The KODENSHIAUK Corp. products are intended for the use as components in general electronic equipment (Office and communication equipment, measuring equipment, home appliance, etc.).**

**Please make sure that you consult with us before you use these KODENSHIAUK Corp. products in equipments which require high quality and / or reliability, and in equipments which could have major impact to the welfare of human life(atomic energy control, airplane, spaceship, transportation, combustion control, all types of safety device, etc.). KODENSHIAUK Corp. cannot accept liability to any damage which may occur in case these KODENSHIAUK Corp. products were used in the mentioned equipments without prior consultation with KODENSHIAUK Corp..**

**Specifications mentioned in this publication are subject to change without notice.**