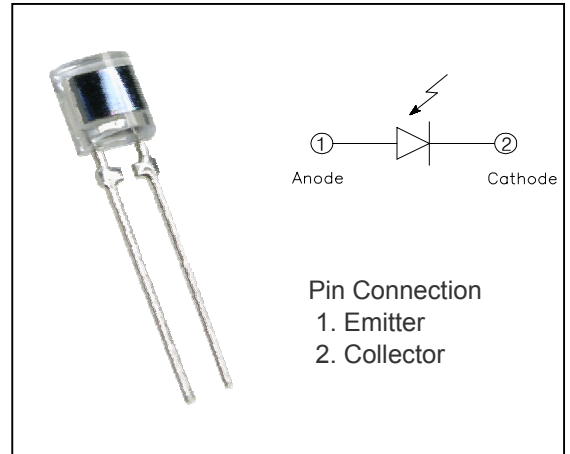


**Description**

The KHP2032 is a high-output, high-speed silicon Pin photodiode mounted in a side-viewing plastic package.

**Features**

- Plastic mold package
- High speed response
- Wide Angle



**Applications**

- Optical detectors/switch
- VCR, Camcoders
- Floppy disk drivers
- Tape End sensor

**Absolute Maximum Ratings**

[T<sub>A</sub> = 25 °C]

Parameter	Symbol	Min.	Max.	Max.
Reverse Voltage	V <sub>R</sub>	-	20	V
Power Dissipation	P <sub>D</sub>	-	100	mW
Operating Temperature	Topr.	-30	85	°C
Storage Temperature	Tstg.	-30	100	°C
Soldering Temperature*1	Tsol	-	260	°C

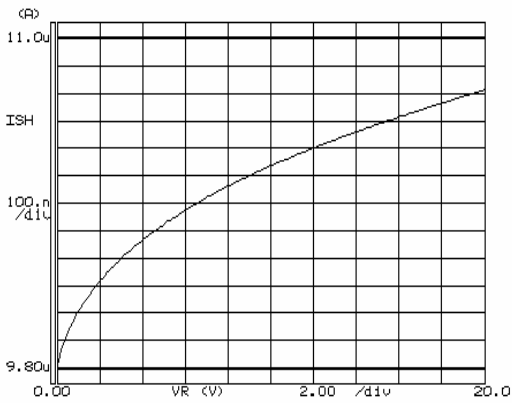
\*1 : MAX 5s

The contents of this data sheet are subject to change without advance notice for the purpose of improvement.  
When using this product, would you please refer to the latest specifications.

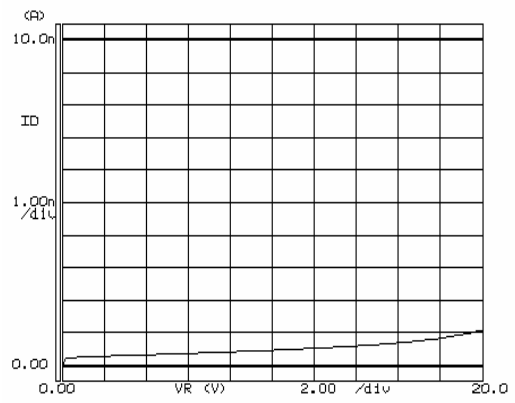
# KHP2032

## Rating and Characteristic Curves

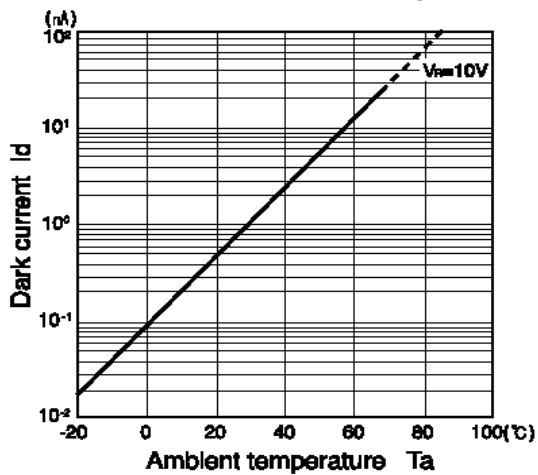
Short Current Vs. Reverse Voltage



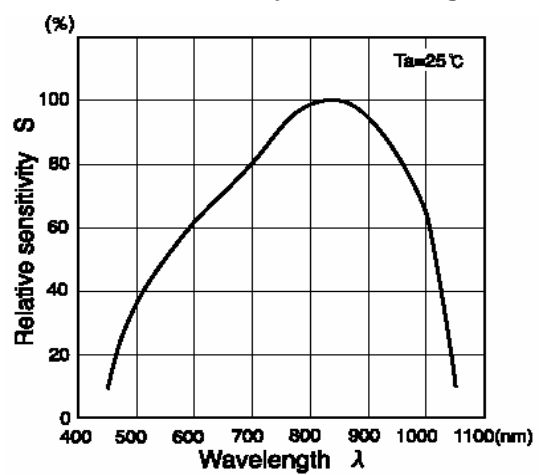
Dark Current Vs. Reverse Voltage



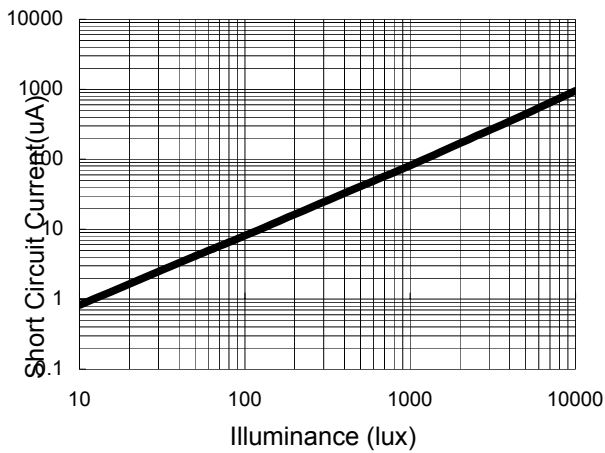
Dark Current Vs. Ambient Temperature



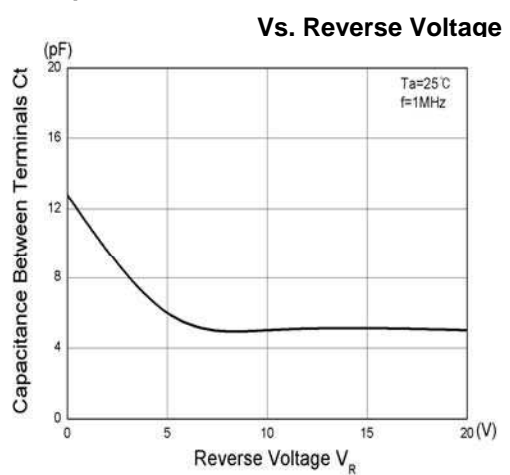
Relative Sensitivity Vs. Wavelength



Dark Current Vs. Ambient Temperature



Capacitance Between Terminals



The contents of this data sheet are subject to change without advance notice for the purpose of improvement. When using this product, would you please refer to the latest specifications.

# KHP2032

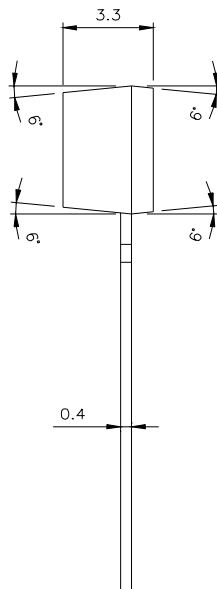
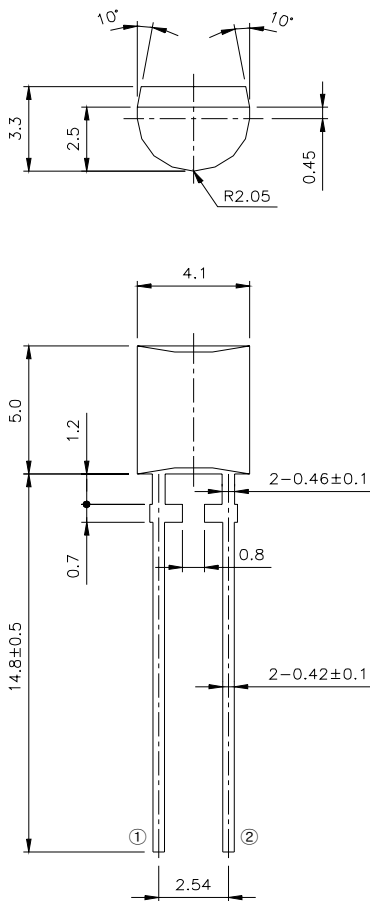
## Electrical Characteristics

[T<sub>A</sub> = 25°C]

Parameter	Symbol	Conditions	Min.	Typ.	Max.	Unit
Short Circuit Current	I <sub>sc</sub>	E <sub>V</sub> =1,000lux*2	75.6	90.0	104.4	μA
Dark current	I <sub>D</sub>	V <sub>R</sub> =10V	-	1.0	20	nA
Capacitance	C <sub>t</sub>	V <sub>R</sub> =10V, f=1MHz	-	11.0	-	pF
Spectral sensitivity	λ	-	430~1090			nm
Peak Wavelength	λ <sub>p</sub>	-		900		nm
Half Angle - X	Δθ <sub>X</sub>	a lens long direction	-	130	-	deg
Half Angle -Y	Δθ <sub>Y</sub>	a lens short direction	-	150	-	deg
Rise time	tr	V <sub>R</sub> =10V, R <sub>L</sub> =1kΩ	-	30	-	ns
Fall time	tf		-	30	-	ns

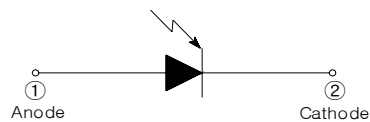
## Package Outline Dimensions

(Unit : mm)



### NOTE

1. GENERAL TOLERANCE : ±0.2
2. PIN CONFIGURATION



The contents of this data sheet are subject to change without advance notice for the purpose of improvement.  
When using this product, would you please refer to the latest specifications.