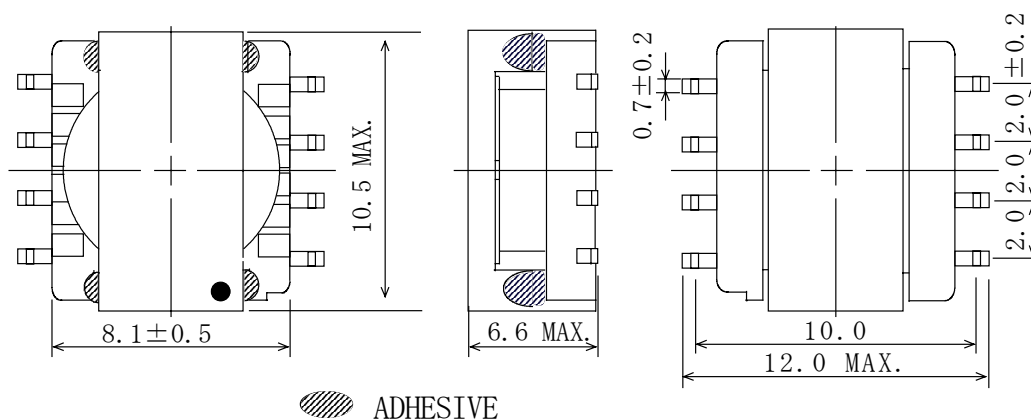
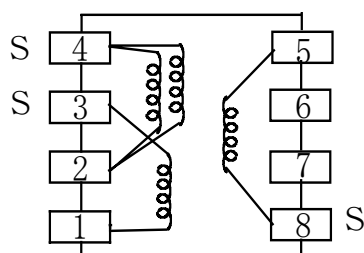


**Type: CER95**
**◆ Product Description**

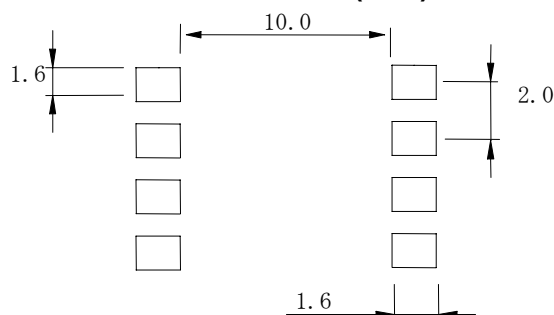
- 10.5×8.6mm Max.(L×W), 6.6mm Max. Height.
- In addition to the typical versions of parameters shown here, custom parameters are available to meet your exact requirements.


**◆ Feature**

- Max. Operating frequency 500KHz,Max. Operating Power 3.0W(500kHz).
- Ideally used in Portable equipment.
- RoHS Compliance.

**◆ Dimensions (mm)**

**◆ Schematics (Bottom)**


“S” indicates winding start.

**◆ Land Pattern (mm)**

**◆ Specification**

Sample No.	Inductance (4-2) 100kHz/0.1V	D.C.R.(4-2) Max.	Leakage Inductance(4-2) 100kHz/0.1V	Turns ratio (4-2):( 8-5):(3-1)	Hi-pot (1,2,3,4-5,8)
PS05-030	430 $\mu$ H $\pm$ 25%	700m $\Omega$	5 $\mu$ H Max.	1:0.33:0.33	DC1500V/1s