

Type: CPFC11D60

◆ Product Description

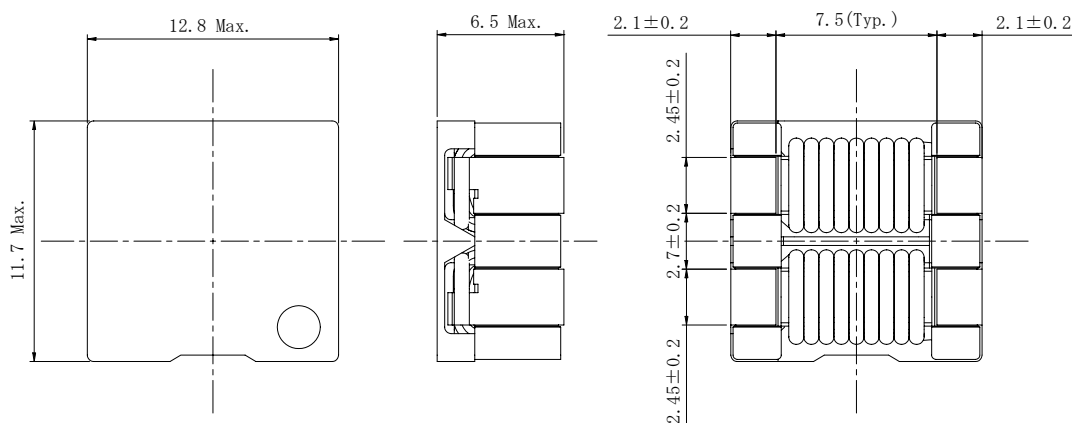
- 12.8×11.7mm Max.(L×W), 6.5mm Max. Height .
- Custom design is available.



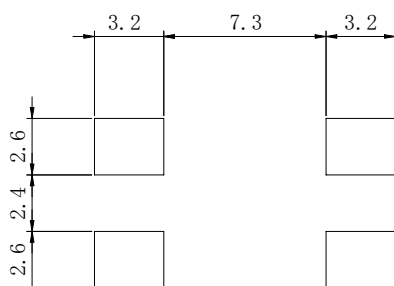
◆ Feature

- For medical machines and automotive related applications.
- Of high reliabilities.
- RoHS Compliance

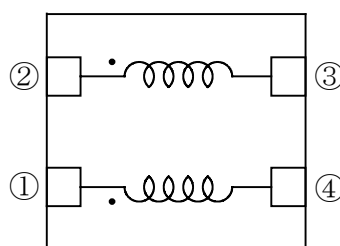
◆ Dimensions (mm)



◆ Land Pattern (mm)



◆ Schematics (Bottom)



◆ Specification

Part Name.	Stamp	Impedance (1,2-3,4) 100MHz	D.C.R (1-4) and (2-3)	Rated Current (1-2) ※1 (3-4)short
CPFC11D60-100M08	122	800Ω Min	8.0mΩ Max.	6.0A

※1. Rated Current: The DC current at which the temperature rise is $\Delta t=40^{\circ}\text{C}$. ($T_a=20^{\circ}\text{C}$)