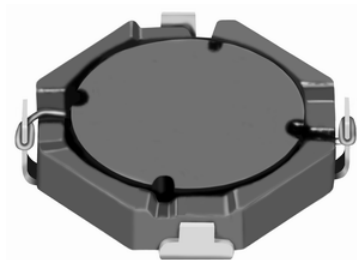
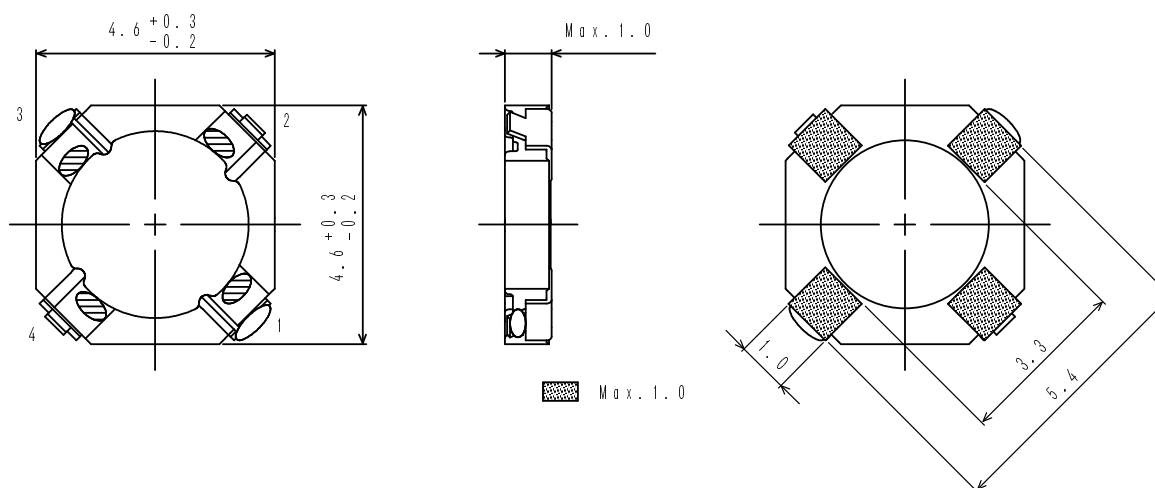
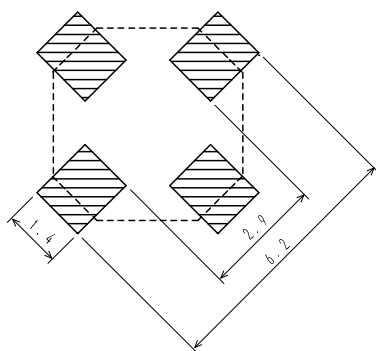
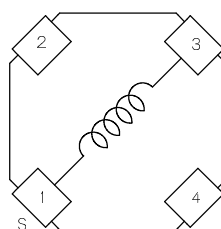


**Type: CLS4D09**
**◆ Product Description**

- 4.9×4.9mm Max.(L×W), 1.0mm Max. Height.
- 4 Terminal pins' type gives a flexible design as inductors or transformers (SEPIC,ZETA circuit).
- Custom design is available.


**◆ Feature**

- Magnetically shielded construction.
- Ideally used in portable devices such as Mobilephone,DSC/DVC,MP3,PDA, etc as DC-DC Converter inductors, specially suitable for White LED drive.
- RoHS Compliant.

**◆ Dimensions (mm)**

**◆ Land Pattern (mm)**

**◆ Schematics(Bottom)**


**Type: CLS4D09**
**◆ Specification**

Part Name ※	Stamp	Inductance ( $\mu$ H) 100kHz	D.C.R.(m $\Omega$ ) Max.(Typ.) (at 20°C)	Saturation current (mA) ※1	Temperature Rise Current (mA) ※2
CLS4D09NP-4R7N□	A	4.7 $\pm$ 30%	185(150)	800	750
CLS4D09NP-6R8N□	B	6.8 $\pm$ 30%	260(210)	630	630
CLS4D09NP-100N□	C	10 $\pm$ 30%	370(300)	500	500
CLS4D09NP-150N□	D	15 $\pm$ 30%	580(470)	420	370
CLS4D09NP-220N□	E	22 $\pm$ 30%	910(730)	350	300

**※ Description of part name**

CLS4D09NP-4R7N□

- B Box
- C Carrier Tape

※1. Saturation current: The DC current at which the inductance decreases to 65% of it's nominal value.

 ※2. Temperature rise current: The DC current at which the temperature rise is  $\Delta t=40^{\circ}\text{C}$ . ( $T_a=20^{\circ}\text{C}$ ).