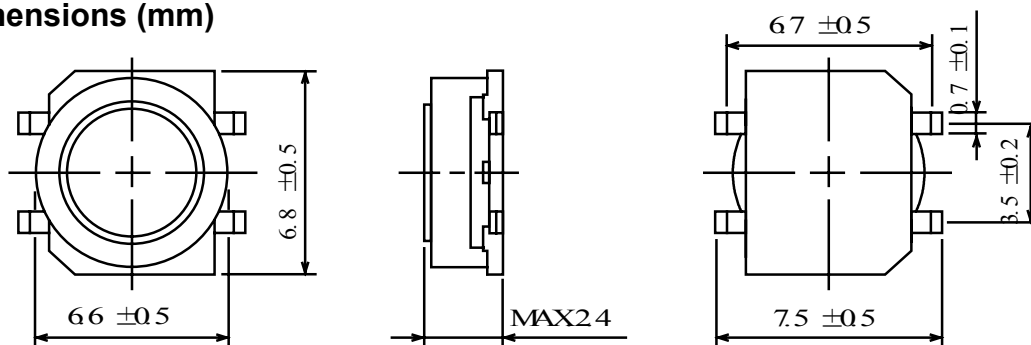
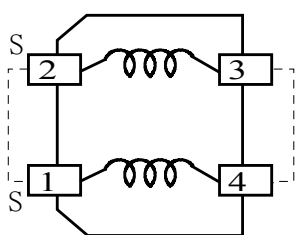


**Type: CLS62B**
**◆ Product Description**

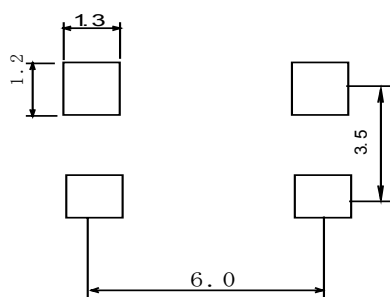
- 7.3×7.1mm Max.(L×W), 2.4mm Max. Height.
- In addition to the typical versions of parameters shown here, custom designs are available to meet your exact requirements.


**◆ Feature**

- Magnetically shielded construction.
- Ideally used in power supply of DSC、DVC、Note PC.
- RoHS Compliance

**◆ Dimensions (mm)**

**◆ Schematics (Bottom)**


“ S ” indicates winding start.

**◆ Land Pattern (mm)**

**◆ Specification**

Sample No.	Inductance (1, 2-3, 4) 7.96MHz	D.C.R.(1,2-3,4) @20℃	Rated Current (1,2-3,4)
94T-217	5 μ H ±40%	74m Ω Max.	1.04 A

※Rated current: The D.C. current at which the inductance decreases to 75% of it's initial value or when Δt=40℃, whichever is lower(Ta=20℃).