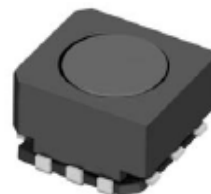
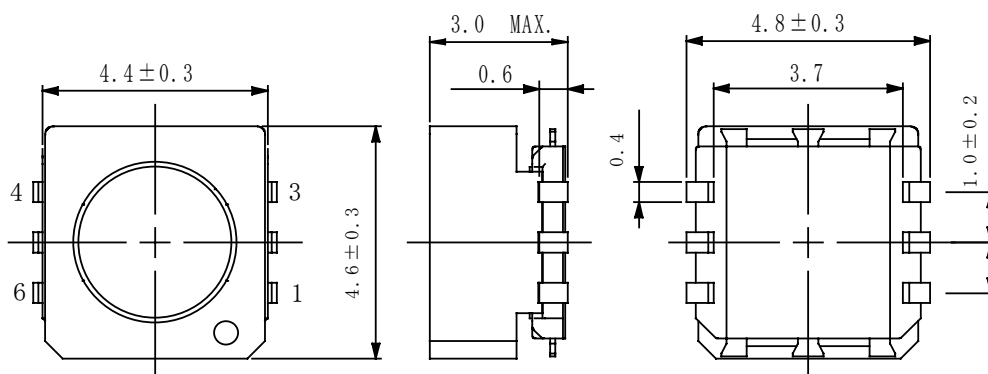
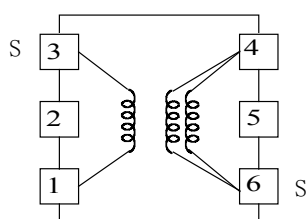


Type: CLQ4D27
◆ Product Description

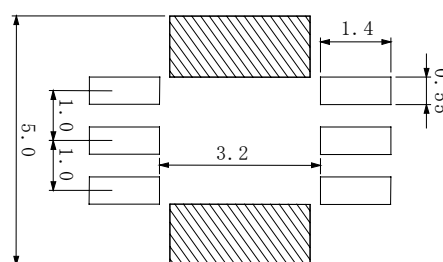
- 4.9×4.6mm Max.(L×W), 3.0mm Max.(Height)
- In addition to the typical versions of parameters shown here, custom designs are available to meet your exact requirements


◆ Feature

- Magnetically shielded construction.
- Max. Operating frequency 1MHz, Max Operating Power 540mW (1MHz).
- Ideally used in Digital still camera, Digital video camera, LCD TV, Portable equipment.
- RoHs Compliance

◆ Dimensions (mm)

◆ Schematics (Bottom)


“ S ” indicates winding start.

◆ Land Pattern (mm)

◆ Specification

Sample No.	Inductance (4-6) (100kHz/1.0V)	D.C.R. (4-6)	Hi-pot (1,3-4,6) (0.5mA)
4368-T088	12.4 μ H \pm 30% within	580m Ω Max.	DC 100V/1min.