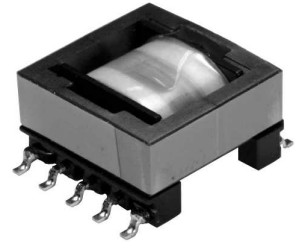


Type: CEEH137
◆ Outline

- Available for automotive application (For High-reliability)

◆ Product Description

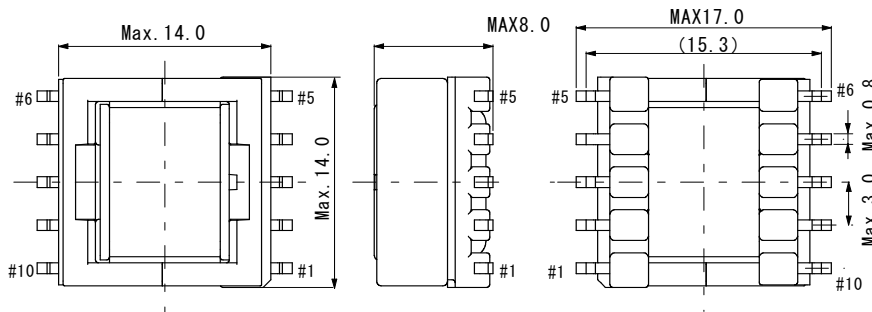
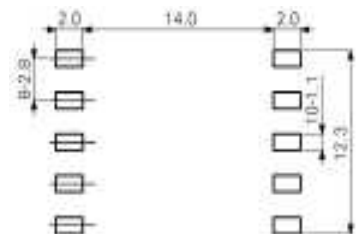
- 14.0 mm x 14.0mm x H 8.0mm (all max.)
- Custom design is available.


◆ Feature

- SMD type
- RoHS Compliance

◆ Applications

- High-reliability DC/DC converter transformer for automotive
- IGBT drive insulated transformer for EV air conditioners
- Insulated transformer for battery monitoring units, medical and industrial equipment

◆ Dimensions (mm)

◆ Land Pattern (mm)

◆ Electrical characteristic

- Max. Operating frequency 500 kHz
- Operating Power 2.5W (@ 100 kHz)
- Withstand voltage : 1,500Vrms / 1minute (* Will be designed for your withstand voltage request)

◆ Reliability

- Operating temperature range : - 40°C~+ 125°C (*including self-heating)
- Vibration test condition : Approximately 30G (* It will be tested by your test profile on demand)
- Thermal shock test temp range : - 40°C~ + 105°C / 1,000 cycle times