

SMD Power Inductor CDRH38D16R/HP



Description

- Ferrite drum core construction.
- Magnetically shielded.
- L × W × H: 4.2 × 3.95 × 1.8 mm Max.
- Product weight: 85mg(Ref.)
- Moisture Sensitivity Level: 1
- RoHS compliance.

Environmental Data

- Operating temperature range: -40°C~+105°C (including coil's self temperature rise)
- Storage temperature range: -40°C~+105°C
- Solder reflow temperature: 260 °C peak.

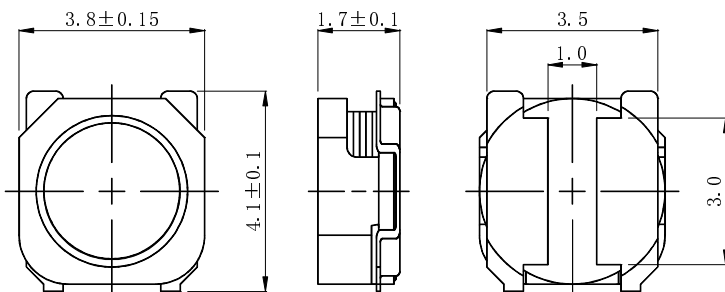
Packaging

- Carrier tape and reel packaging
- 13.0" diameter reel
- 3000pcs per reel

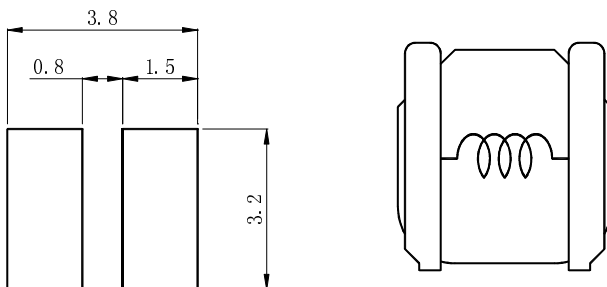
Applications

- Ideally used in Mobilephone, PDA, MP3, DSC/DVC, HDD, etc as DC-DC converter inductors .

Dimension - [mm]



Land pattern and Schematics - [mm]



SMD Power Inductor CDRH38D16R/HP



Electrical Characteristics

Part No.	Stamp	Inductance (μ H) [Within] ※1	D.C.R. (m Ω) [Within] (at20°C)	Saturation current (A) ※2		Temperature rise Current (A) ※3
				(at20°C)	(at100°C)	
CDRH38D16RHPNP-R90NC	A	0.90 \pm 30%	20 \pm 25%	2.66	2.40	3.30
CDRH38D16RHPNP-1R6NC	B	1.6 \pm 30%	29 \pm 25%	2.06	1.76	2.95
CDRH38D16RHPNP-2R2NC	C	2.2 \pm 30%	34 \pm 25%	1.76	1.50	2.65
CDRH38D16RHPNP-3R3MC	D	3.3 \pm 20%	59 \pm 25%	1.46	1.22	1.95
CDRH38D16RHPNP-4R7MC	E	4.7 \pm 20%	82 \pm 25%	1.24	1.07	1.60
CDRH38D16RHPNP-6R8MC	F	6.8 \pm 20%	112 \pm 25%	1.00	0.85	1.35
CDRH38D16RHPNP-100MC	G	10 \pm 20%	156 \pm 20%	0.84	0.72	1.15
CDRH38D16RHPNP-150MC	H	15 \pm 20%	216 \pm 20%	0.66	0.56	1.00
CDRH38D16RHPNP-220MC	J	22 \pm 20%	371 \pm 20%	0.54	0.46	0.75
CDRH38D16RHPNP-330MC	K	33 \pm 20%	694 \pm 20%	0.45	0.38	0.50
CDRH38D16RHPNP-470MC	L	47 \pm 20%	847 \pm 20%	0.38	0.32	0.45
CDRH38D16RHPNP-680MC	M	68 \pm 20%	1357 \pm 20%	0.32	0.27	0.30

※1. Measuring condition: at 100kHz.

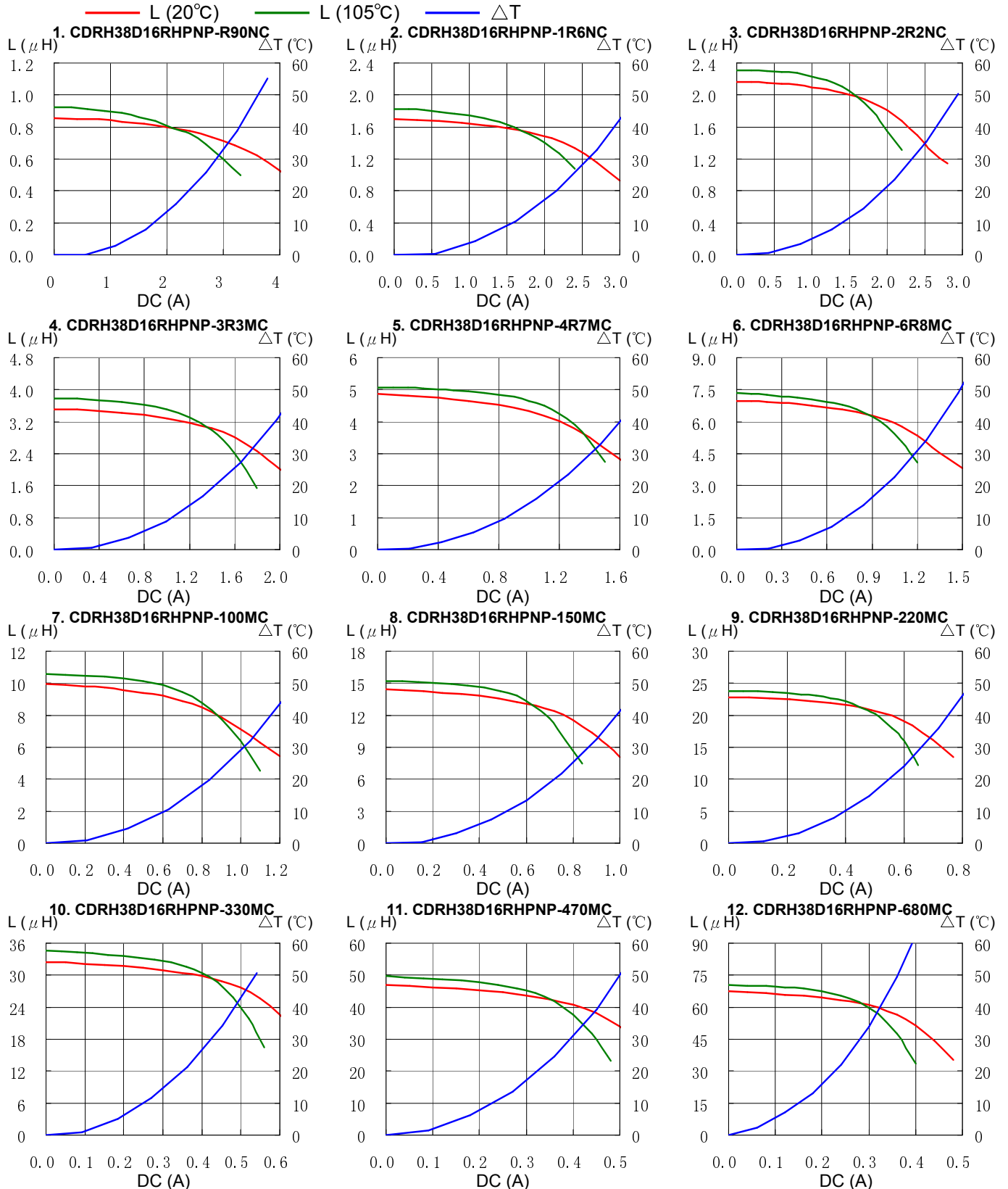
※2. Saturation current: The value of D.C. current when the inductance decreases to 70% of its nominal value.

※3. Temperature rise current: The value of D.C. current when the temperature rise is $\Delta t=40^{\circ}\text{C}$ ($T_a=20^{\circ}\text{C}$).

SMD Power Inductor CDRH38D16R/HP



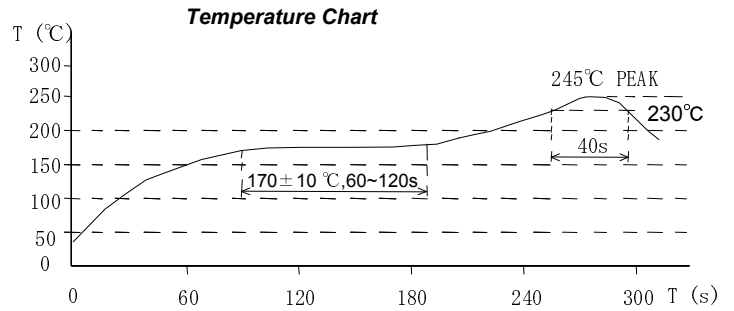
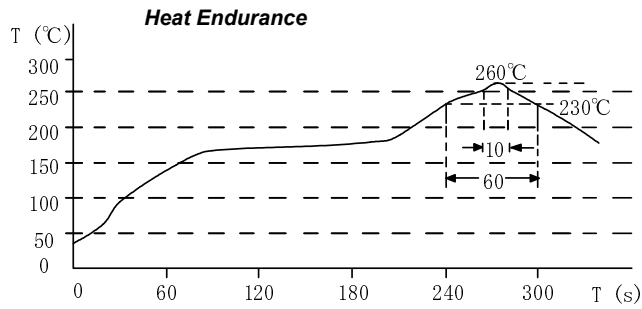
Saturation Current & Temperature Rise Graph



SMD Power Inductor CDRH38D16R/HP



Solder Reflow Condition



Please refer to the sales offices on our website - <http://www.sumida.com>

Hong Kong

Tel. +852-2880-6688
FAX. +852-2565-9600
sales@hk.sumida.com

Tokyo

Tel. +81-3-5202-7112
FAX. +81-3-5202-7105
sales@jp.sumida.com

Chicago

Tel. +1-847-545-6700
FAX. +1-847-545-6720
sales@us.sumida.com

Shanghai

Tel. +86-021-5836-3299
FAX. +86-021-5836-3266
shanghai.sales@cn.sumida.com

Seoul

Tel. +82-2-6237-0777
FAX. +82-2-6237-0778
sales@kr.sumida.com

Oberzell

Tel. +49-8591-937-0
FAX. +49-8591-937-103
contact@sumida-eu.com

Shenzhen

Tel. +86-755-8291-0228
FAX. +86-755-8291-0338
shenzhen.sales@cn.sumida.com

Singapore

Tel. +65-6296-3388
FAX. +65-6296-3390
sales@sg.sumida.com

Neumarkt

Tel. +49-9181-4509-110
FAX. +49-9181-4509-310
infocomp@eu.sumida.com

Taipei

Tel. +886-2-8751-2737
FAX. +886-2-8751-2738
sales@tw.sumida.com

San Jose

Tel. +1-408-321-9660
FAX. +1-408-321-9308
sales@us.sumida.com