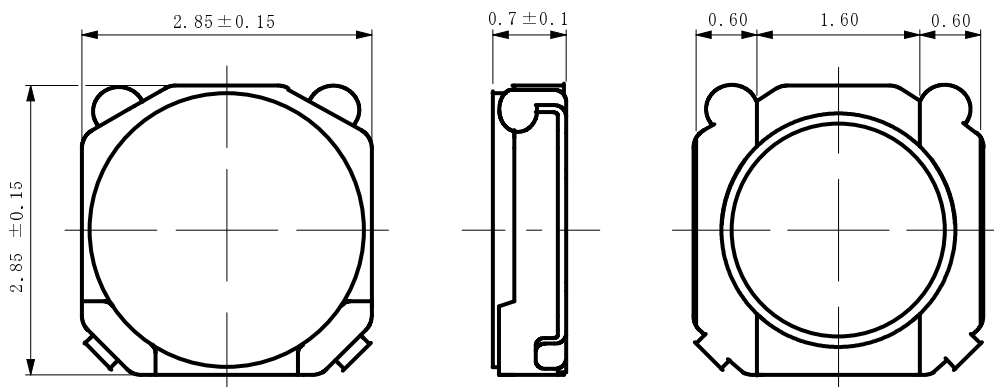
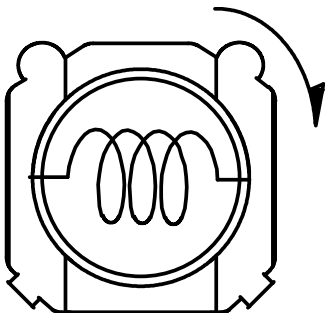
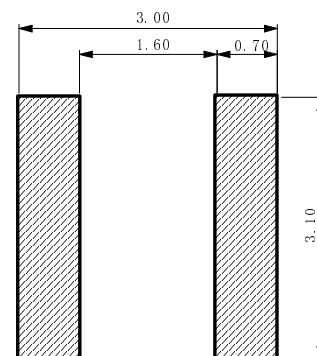


Type: CDRH28D07
◆ Product Description

- 3.0×3.0mm Max.(L×W), 0.8mm Max. Height.
- Inductance range: 1.0~15 μ H;
- Rated current range: 0.25~0.90A;
- Custom design is available.


◆ Feature

- Magnetically shielded construction.
- Storage temperature range: -40°C ~+105°C.
- Operating temperature range: -40°C~+105°C (including coil's self-heat).
- Ideally used in Mobilephone,PDA,MP3,DSC/DVC,HDD and other portable devices.
- Product weight: 0.022 g(Ref.).
- RoHS compliance.

◆ Dimensions (mm)

◆ Schematics (Bottom)

◆ Land Pattern (mm)


Type: CDRH28D07
◆ Specification

Part No.	Stamp	Inductance (μ H) at 100KHz	D.C.R. (m Ω) (at 20°C)	Saturation Current (A) ※1 (at 20°C)	Temperature Rise Current (A) ※2
CDRH28D07NP-1R0NC	A	1.0 \pm 30%	79 \pm 25%	0.90	1.15
CDRH28D07NP -1R4NC	C	1.4 \pm 30%	94 \pm 25%	0.80	1.05
CDRH28D07NP -2R2NC	D	2.2 \pm 30%	125 \pm 20%	0.66	0.87
CDRH28D07NP -3R3NC	F	3.3 \pm 30%	190 \pm 20%	0.52	0.72
CDRH28D07NP -4R7MC	H	4.7 \pm 20%	278 \pm 20%	0.43	0.53
CDRH28D07NP -6R4MC	K	6.4 \pm 20%	330 \pm 20%	0.40	0.48
CDRH28D07NP -100MC	M	10 \pm 20%	562 \pm 20%	0.31	0.36
CDRH28D07NP -150MC	P	15 \pm 20%	955 \pm 20%	0.25	0.26

※1.Saturation current: The DC current at which the inductance decreases to 70% of its nominal value.

※2.Temperature rise current: The DC current at which the temperature rise is $\Delta t=40^{\circ}\text{C}$.($T_a=20^{\circ}\text{C}$).