

6.0 mm X 3.5 mm B6-2 series Crystal

Description

Surface mount AT-strip crystal technology historically used in wireless applications and reference crystals for microprocessor clock timing applications.



Features:

- Available in frequencies from 10 MHz to 80 MHz
- +/- 10 ppm available over temp.
- Very compact and thin
- Shock resistant
- Designed for high-temp reflow
- RoHS compliant

Frequency Range, Operating Temperature, and Frequency Stability:

Frequency Range	Operating Temperature	Product Code	Temperature Stability	Product Code	Frequency at room	Product Code
10 MHz to 80 MHz	-10 to +60°C	A	+/- 10 ppm	A	+/- 10 ppm	A
	-20 to +70°C	B	+/- 20 ppm	B	+/- 20 ppm	B
	-40 to +85°C	C	+/- 30 ppm	C	+/- 30 ppm	C
			+/- 50 ppm	D	+/- 50 ppm	D
			+/-100 ppm	E	+/-100 ppm	E

** Note: Not all combinations of temperature range, temperature stability, and frequency at room temperature are available.

Aging (at 25C):

Frequency	Timeframe	Aging
All	Per Year	+/- 5.0 ppm

Crystal Electrical Parameters:

Effective Series Resistance:

Frequency Range (MHz)	ESR (Max)
10MHz to 10.999MHz	100 ohms
11MHz to 11.999MHz	80 ohms
12MHz to 15.999MHz	60 ohms
16MHz to 39.999MHz	40 ohms
>40MHz (third overtone)	70 ohms



Operating Capacitive Load:

Clod (pF)	Product Code
10.0	A
15.0	B
20.0	C
32.0	D
Series	E

6.0 mm X 3.5 mm B6-2 series Crystal

Co and Drive Level:

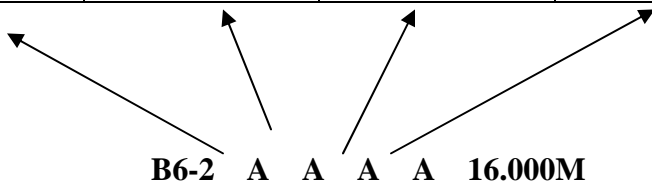
Co (pF)	Drive Level (uW)
3.0 max.	100 max

Environmental:

Storage Temperature	-40 to +85 °C
---------------------	---------------

Ordering Options:

Product Code.	Operating Temp.	Temperature Stability	Frequency at Room Temp.	Clload	Operating Frequency
B6-2	A	A	A	A	xx.xxxMHz
B6-2	B	B	B	B	xx.xxxMHz
B6-2	C	C	C	C	xx.xxxMHz
B6-2		D	D	D	xx.xxxMHz
B6-2		E	E	E	xx.xxxMHz



B6-2 A A A A 16.000M

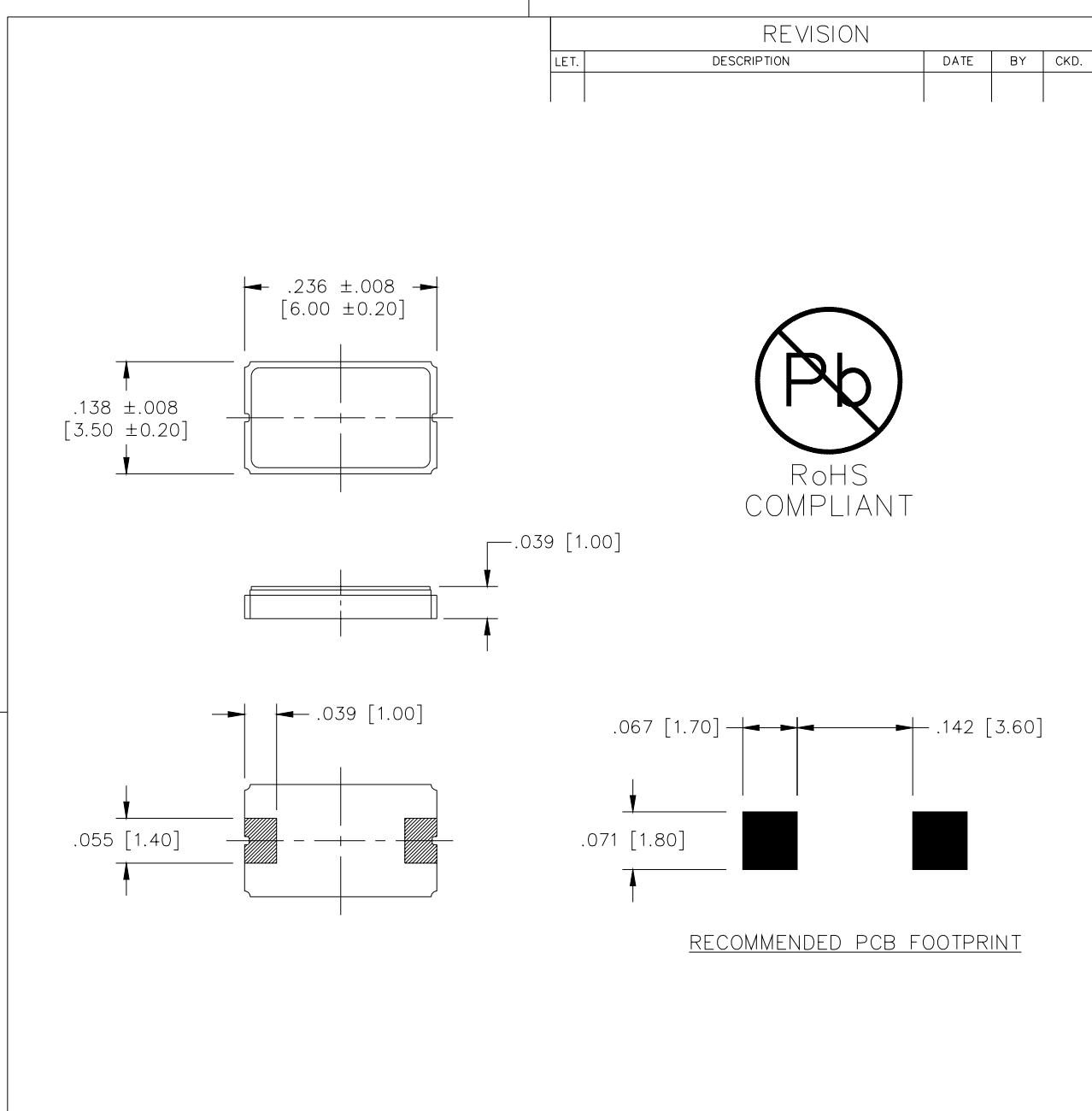
This example part number has the following specs:

RoHS compliant, -10 to +60C, +/-10 ppm temperature stability and +/- 10 ppm make-tolerance at 25C with operating Clload of 10 pF at 16 MHz

**** Consult with Bliley Sales for other parameters.**

6.0 mm X 3.5 mm B6-2 series Crystal

Outline Drawing & Pin Out:



REVISION				
LET.	DESCRIPTION	DATE	BY	CKD.



RECOMMENDED PCB FOOTPRINT

DO NOT SCALE PRINT. UNLESS OTHERWISE SPECIFIED ALL DIMENSIONS ARE IN INCHES [MILLIMETERS].
TOLERANCES: HOLES ±.002 ANGLES ± 1° INCHES .xxx ± .004 [x.xx ± 0.10] [MILLIMETERS] [x.x ±]

BLILEY TECHNOLOGIES INC.
2545 WEST GRANDVIEW BLVD.
ERIE, PENNSYLVANIA 16506

MATERIAL:	SHOP TYPE		OUTLINE DRAWING B6-2 SMD CRYSTAL			
	SUPERSEDES					
FINISH:	DR.	CKD.	SIZE	FSCM NO.	DRAWING NO.	REV.LET.
	JPG	WCL	A	71034	812146	
	AP.	AP.	SCALE:	DATE DRAWN 1-16-2008		
	GMC		6:1			

PE20D-1



6.0 mm X 3.5 mm B6-2 series Crystal

How to Order This Product:

Contact Bliley Technologies with Product Selection Code

Attn:

Sales @ Bliley

Fax: **814-833-2712**

Phone: 814-838-3571

Email: info@bliley.com

Web: www.bliley.com

Date: _____

From:

Name: _____ Company: _____

Fax: _____ Phone: _____

Email: _____

Quantities to Quote: _____ Target Price: \$ _____

Application / Reference #: _____