



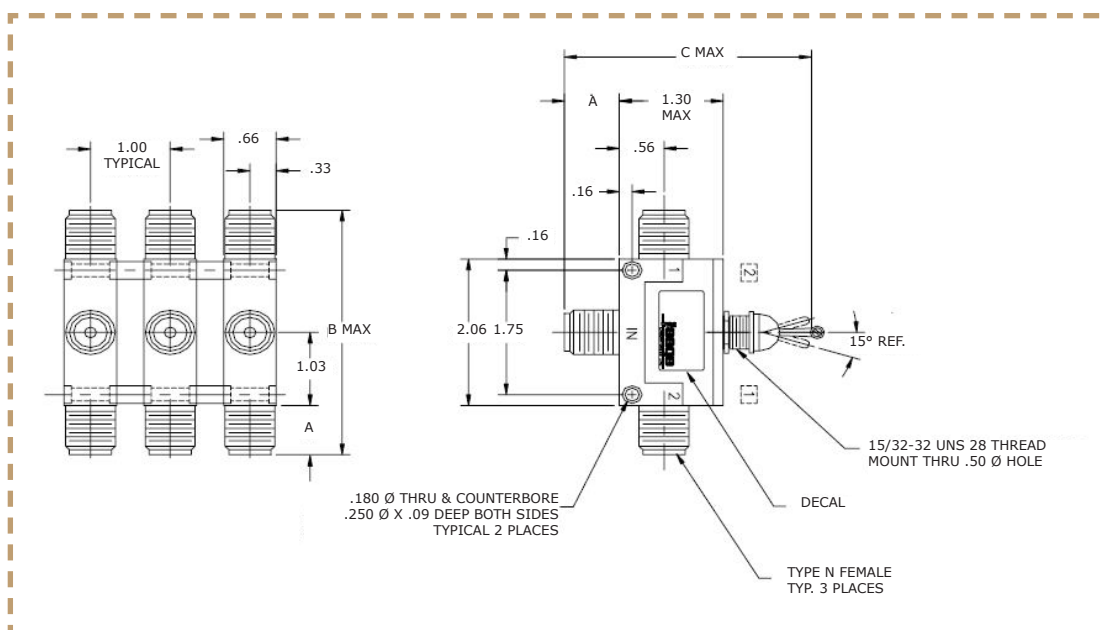
FEATURES

- Type "N," "TNC," "BNC" & SMA Connectors Available
- Moderate Power Handling Capability
- Designed for MIL-E-5400 Class II
- Ganged to Make Multiport Double Through Configurations

Frequency Range (GHz)	VSWR (max.) @ (GHz)	Insertion Loss, max. (dB)	Isolation, min. (dB) @ (GHz)	Peak Power (kW)	Average Power Watts @ 1 GHz ¹	Minimum Actuation Life	Nominal Weight (ounces)
DC-5	1.30:1	0.3	50, DC-130, 1-5	2.5	500	100K	0.5

Notes:
1. Power rating is the lesser of the value shown or the rating provided in applicable MIL specifications for the selected connector style.

Outline Drawing:

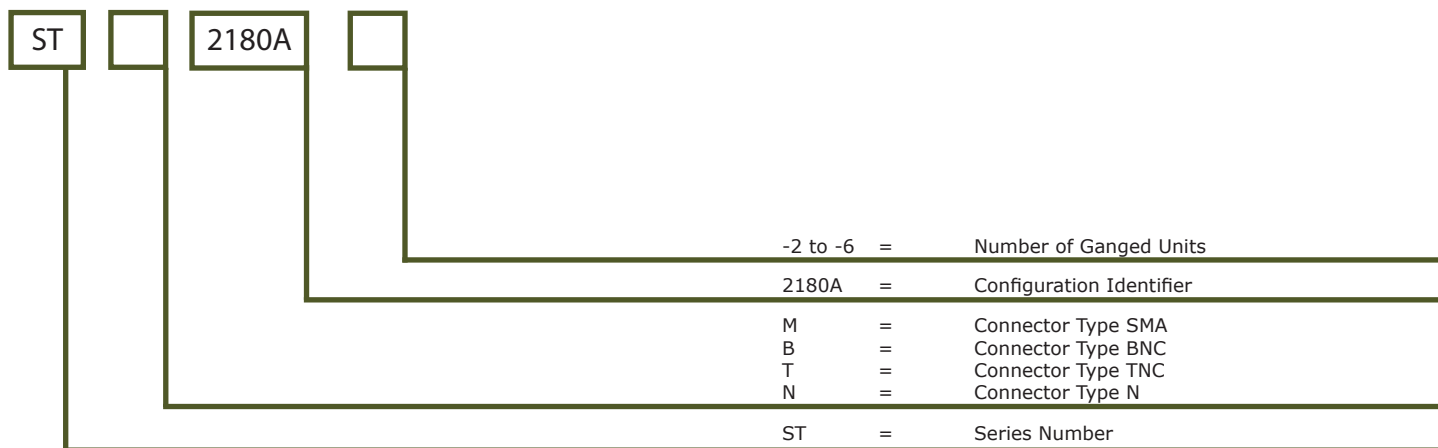


Connector Type (Female)	Model	A inch (cm)	B inch (cm)	C inch (cm)
SMA	STM2180A	0.40 (1,02)	2.84 (7,21)	2.80
BNC	STB2180A	0.54	3.16	2.98 (7,57)
TNC	STT2180A	0.58	3.16	2.98 (7,57)
N	STN2180A	0.69 (1,75)	3.42	3.10

Ordering Information

Units may be ordered individually or in ganged sets of up to six units (-2, 3, 4, 5 and 6). The following ordering key is provided to assist in the creation of ordering part numbers.

Part Number Key



Miscellaneous:

1. Spectrum Microwave "Standard Warranty and Order Terms and Conditions" apply to all orders.
2. All specifications subject to change without notice.
3. Parts are available from stock. Contact factory for delivery confirmation for all quantities over 10,000.
4. Contact our local Manufacturers Representative for pricing.