

SPST RF SWITCH

MODEL TWP2209

Available as: TWP2209, 8 Lead 0.180" Sq. Flatpack (FP7)
 BXW2209, SMA Connectorized Housing

Features

- DC - 3000 MHz
- RF2 Terminated in "OFF" Position
- Fast Switching Speed: 10 ns Typical
- Environmental Screening Available

Absolute Maximum (No Damage) Ratings

Ambient Operating Temperature -55°C to + 100 °C
 Storage Temperature -65°C to + 125 °C
 Case Temperature + 125 °C
 DC Voltage -8.5 Volts
 Continuous RF Input Power +30 dBm

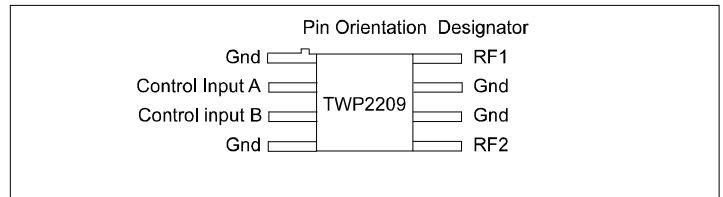
Specifications

CHARACTERISTIC	TYPICAL Ta = 25 °C	MIN/MAX Ta = -55 °C to +85 °C
Frequency	DC - 3000 MHz	DC - 3000 MHz
Insertion Loss (dB)	1.0	1.5 Max.
Isolation (dB)	45	27 Min.
VSWR	In <1.25:1 Out <1.25:1	1.6:1 Max. 1.5:1 Max.
Control Input High	Vdc -5.0 to -8.0 mA 0.150	-8.0 Max. 0.500 Max.
Control Input Low	Vdc 0 to -0.2 mA 0.010	0 Max. 0.030 Max.
Switching Speed (ns)	10	—

Note: Care should always be taken to effectively ground the case of each unit.

Revision 3/18/2013

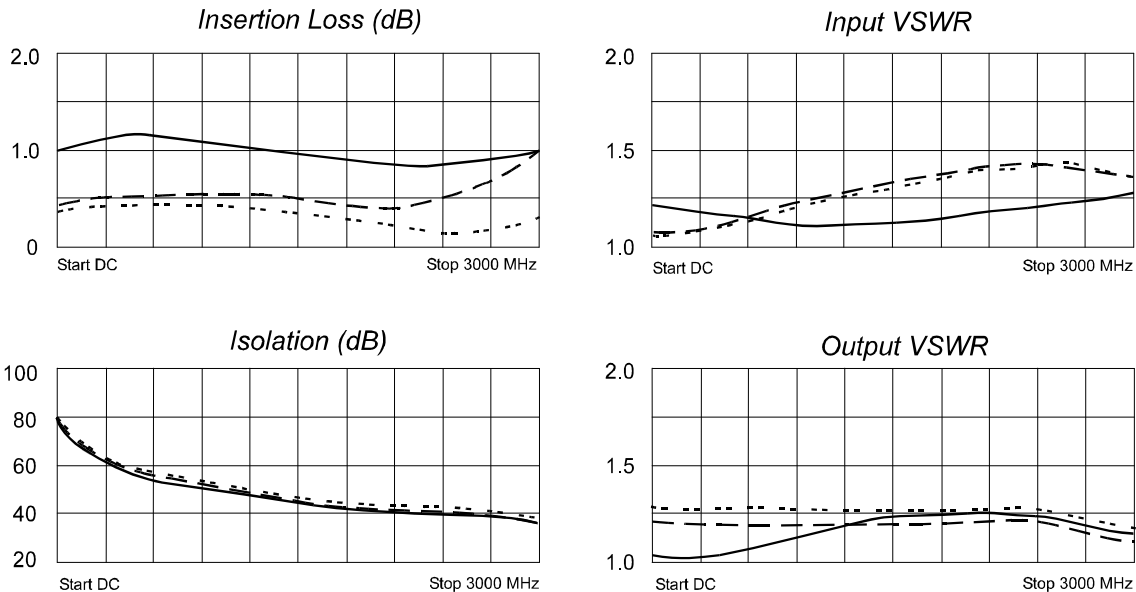
Pin Layout



Truth Table

Control Input		Switch Position
A	B	RF1 to RF2
High	Low	ON
Low	High	OFF

Typical Performance Data



Legend ——— + 25 °C - - - - +85 °C - - - - -55 °C



Spectrum Microwave · 2144 Franklin Drive N.E. · Palm Bay, Florida 32905 · PH (888) 553-7531 · Fax (888) 553-7532

www.SpectrumMicrowave.com

Spectrum Microwave · 2707 Black Lake Place · Philadelphia, Pennsylvania 19154 · PH (215) 464-4000 · Fax (215) 464-4001