

Double Balanced Mixer

Multi-Octave Band

Model MM9xSMx Model MM9xSMx-14

RF 6.0 to 18.0 GHz

Electrical Specifications:⁽¹⁾

Parameter	Conditions			Specifications		
	RF (GHz)	LO (GHz)	IF (MHz)	Min	Typical	Max
SSB Conversion loss: ^{(2) (3)}	6.0-18.0	6.0-18.0	DC-1300		5.7 dB	8.0 dB
	6.0-18.0	6.0-18.0	DC-2500		6.9 dB	9.0 dB
Isolation						
LO to RF:		6.0-13.0		28 dB	32 dB	
LO to IF:		13.0-18.0		24 dB	28 dB	
RF to IF:	6.0-18.0	6.0-18.0			30 dB	
Input 1 dB Compression Point:	6.0-18.0	6.0-18.0	DC-2500		+1 dBm +4 dBm +8 dBm	MM93 MM94 MM96
Input Third Order Intercept Point:	6.0-18.0	6.0-18.0	DC-2500		+11 dBm +14 dBm +18 dBm	MM93 MM94 MM96
LO Power: ⁽⁴⁾	6.0-18.0	6.0-18.0	DC-2500		+7 dBm +10 dBm +14 dBm	MM93 MM94 MM96

Model MM9xSMx
Model MM9xSMx-14

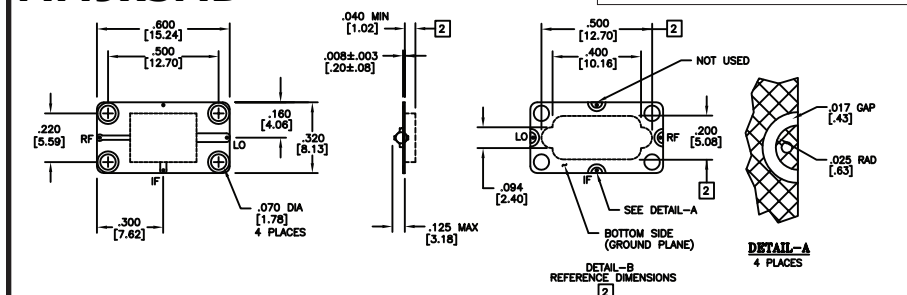
→ **LO Power**
3 = +7 dBm
4 = +10 dBm
6 = +14 dBm

→ **Drop-In Module or With SMA(F) Connectors**
D = No Cover
H = With Cover

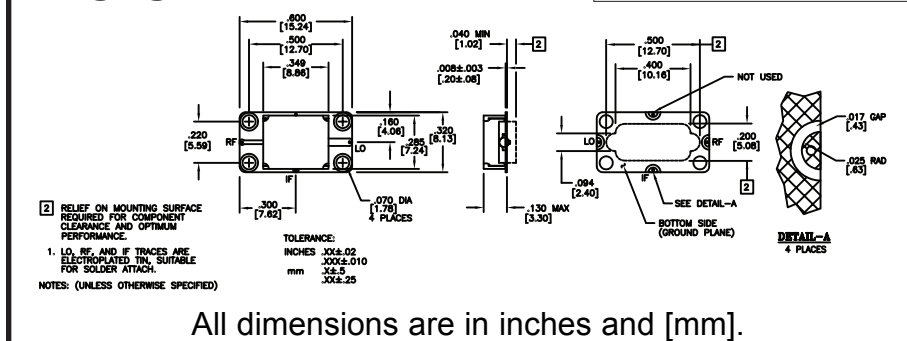
Notes:

- Specifications are guaranteed when tested as a downconverter in a 50 Ohm system at +25°C with the nominal LO power. Specifications indicated as typical are not guaranteed.
- Noise figure is typically within ±0.5 dB of conversion loss for IF frequencies greater than 10 MHz.
- Conversion loss typically degrades less than 0.5 dB at +100°C and improves less than 0.5 dB at -55°C.
- Usable LO drives are up to 2 dB below and 3 dB above nominal.
- See Application Note M112, for aid in selecting the outline and for mounting and installation information.

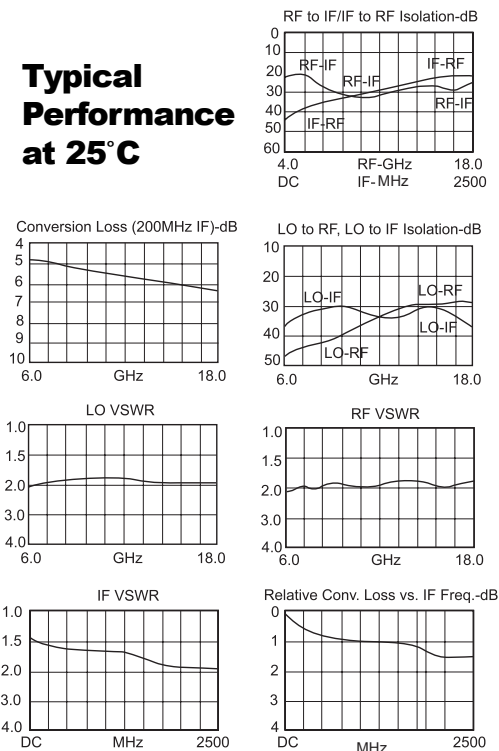
MM9xSMD



MM9xSMH



Typical Performance at 25°C



Spectrum Microwave · 2144 Franklin Drive N.E. · Palm Bay, FL 32905 · PH (888) 553-7531 · Fax (888) 553-7532

Rev.
9/10/07

www.SpectrumMicrowave.com Spectrum Microwave · 2707 Black Lake Place · Philadelphia, PA 19154 · PH (215) 464-4000 · Fax (215) 464-4001