

# RF AMPLIFIER

## MODEL *BXMP1008*

# Medium Power Amplifier

Available as: BXMP1008, SMA Connectorized Housing  
 WNMP1008, 0.750" Gullwing Package (SM-15)  
 FPMP1008, 16 Pin Flatpack Package (FP14)

### Features

- High Power Output: Greater Than 2 Watts
- High Third Order Intercept: +43 dBm Typical
- High IP2: +63 dBm Typical

### Typical Intermodulation Performance at 25 °C

Second Order Harmonic Intercept Point ..... +66 dBm (Typ.)  
 Second Order Two Tone Intercept Point ..... +63 dBm (Typ.)  
 Third Order Two Tone Intercept Point ..... +43 dBm (Typ.)

### Specifications

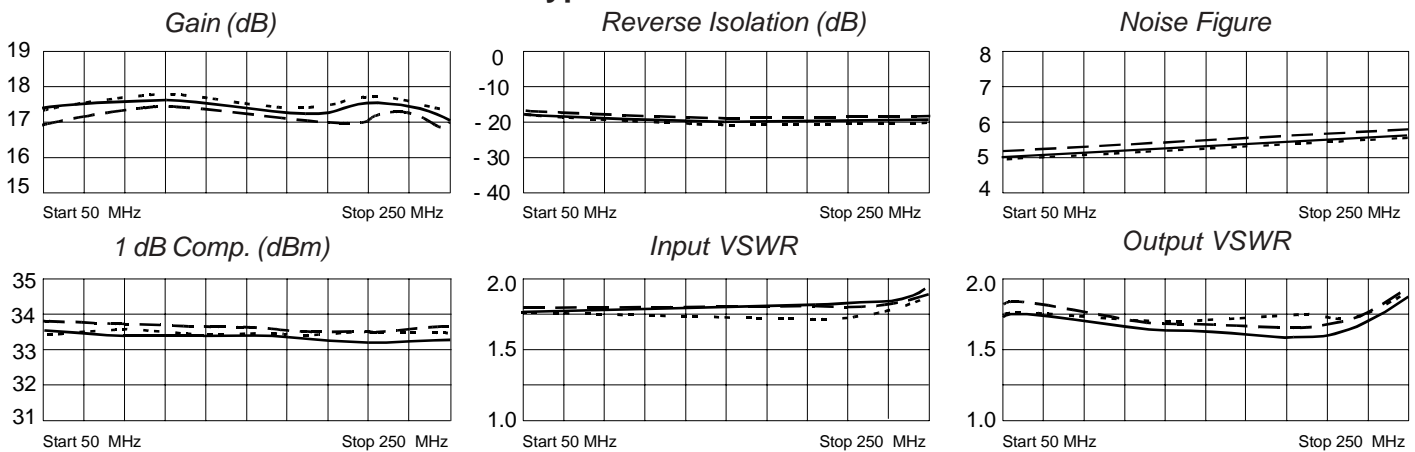
CHARACTERISTIC	TYPICAL Ta= 25 °C	MIN/MAX Ta = 0 °C to +60 °C
Frequency (MHz)	50 - 250 MHz	50 - 250 MHz
Gain (dB)	17	16 Min.
Power @ 1 dB Comp. (dBm)	33.5	33 Min.
Reverse Isolation (dB)	-20	-19 Max.
VSWR In	1.8:1	2:0:1 Max.
VSWR Out	1.8:1	2:0:1 Max.
Noise Figure (dB)	5.6	6.0 Max.
Power Vdc mA	+15 600	+15 630 Max.

Note: Care should always be taken to effectively ground the case of each unit.

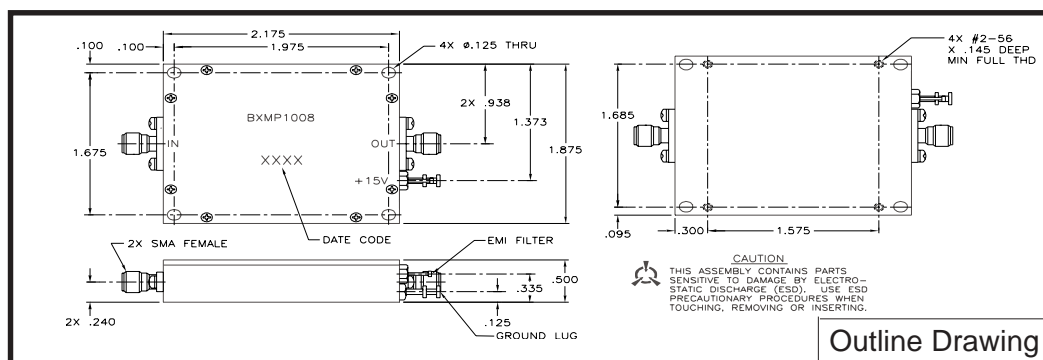
### Maximum (No Damage) Ratings

Ambient Operating Temperature ..... -55°C to + 100 °C  
 Storage Temperature ..... -62°C to + 125 °C  
 Case Temperature ..... + 150 °C  
 DC Voltage ..... + 18 Volts  
 Continuous RF Input Power ..... + 18 dBm  
 Short Term RF Input Power ... 200 Milliwatts (1 Minute Max.)  
 Maximum Peak Power ..... 0.2 Watt (3 µsec Max.)

### Typical Performance Data



Legend ——— + 25 °C    - - - - + 60 °C    ······ 0 °C



Outline Drawing



Spectrum Microwave · 2144 Franklin Drive N.E. · Palm Bay, Florida 32905 · PH (888) 553-7531 · Fax (888) 553-7532

Rev. 10/26/07

www.SpectrumMicrowave.com Spectrum Microwave · 2707 Black Lake Place · Philadelphia, Pennsylvania 19154 · PH (215) 464-4000 · Fax (215) 464-4001