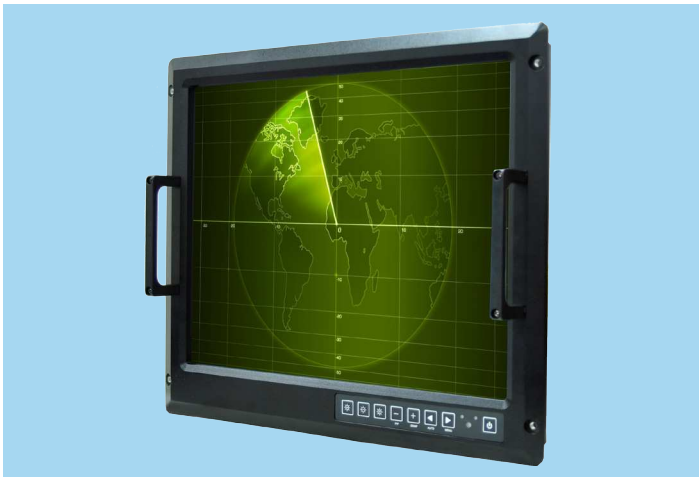


# MILRM20ID3S-A2

**20.1" color TFT, 1600 x 1200 UXGA, COTS Rugged Military Display Computers Compliant with MIL-STD-810 and IEC60068-2-27 Standards**



## Introduction

AIS 20.1" rugged Military display computers are specifically designed for the Commercial Off-The-Shelf (COTS) Military marketplace. AIS MIL-STD and MIL-SPEC compact ruggedized touch computers are designed, engineered, manufactured, and fully qualified to pass MIL-STD-810 and MIL-STD-461 standards. All units are tested for drop-shock, moisture, dust and vibration resistance and temperature extremes for Military, aerospace and government applications.

## Specifications

Display	
Display	20.1" diagonal, Active matrix TFT LCD
Aspect Ratio	4:3
Active/Area	408 (H) x 306 (V) mm
Native (Optimal) Resolution	1600 x 1200 UGA
Colors	16.7M (6bits/color)
Brightness (Typical)	LCD Panel: 300 nits Resistive Touch: 240 nits
Contrast Ratio	800:1
Viewing Angle	Horizontal: 178° Total Vertical: 178° Total
Touch Technology	Resistive 5-wire with EMI Mesh Filter (optional feature)
System Hardware	
Processor	Intel® Atom™ Processor Dual Core D2550 1.86GHz
System Chipset	Intel® NM10 Chipset
System Memory	2GB DDR3 1066/1333 MHz, max 4GB

## Features and Benefits

- Tested to MIL-STD-810 standard methodology for a range of extreme conditions including drops, shocks, vibration, humidity, altitude, rain, dust and sand-resistance, temperature extremes and thermal shock.
- Tested to MIL-STD-461 standard methodology for EMI and EMC.
- Protection against falling dirt, rain, sleet, snow, windblown dust, splashing water, hose-directed water, and corrosion.

Storage	32GB SATA SSD
I/O Interfaces	
Serial Ports	1 x RS232
USB Ports	2 x USB 2.0
Ethernet Ports	2 x RJ 45-10/100/1000 Mbps
VGA Port	1 x VGA
Environmental Conditions	
Temperature	Operating: -25°C to 50°C (-13°F to 122°F)
Humidity (Non-condensing)	10 to 95%
Ingress Protection	NEMA4 IP65 IEC 60529
Vibration Protection	MIL810F/G Method 514.5
General	
Power Input	AC 100 to 240V, Universal ± 10% Military Grade Power Connector Model JY27466
Operation System Support	Windows Embedded Standard 7 Windows XP Embedded
MTBF	50,000 Hours Demonstrated
Dimensions (W x L x H)	482.6 x 398 x 85 mm
Approvals	
Approvals	CE, FCC (DOC) MIL810F/G for Vibration and Shock

## Order Information

**MILRM20ID3S-A2:** 20.1" COTS Rugged Military Display Computers Compliant with MIL-STD-810 and IEC60068-2-27 Standards, 1600 x 1200 UXGA, 800:1 contrast ratio

Unit: mm

