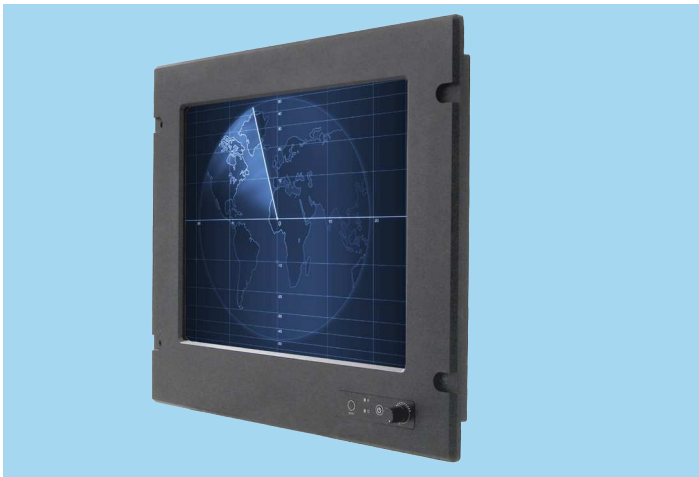


MR19ID3S-A2-5RT

19" color TFT, 1280 x 1024 SXGA, Intel® Atom™ Dual Core N2600 Marine Touch Panel Computer Compliance with IEC 60945, DNV 2.4, and IACS-E10



Introduction

AIS 19" marine touch panel computers and operator interface terminals comply with marine equipment standards meeting the demands of IEC 60945, DNV 2.4, and IACS-E10 (international standard for maritime navigation, radio communications equipment and systems) needed to withstand the harsh maritime environment requiring low EMI or long-term vibration resilience. These are designed for bridge control display, navigation, monitoring and surveillance, and ship automation applications; and comply with anti-shock, anti-vibration.

Specifications

| Display | |
|-----------------------------|--|
| Display | 19" diagonal, Active matrix TFT LCD |
| Aspect Ratio | 4:3 |
| Active/Area | 376.32 (H) x 301.06 (V) mm |
| Native (Optimal) Resolution | 1280 x 1024 SXGA |
| Colors | 16.7M, 6 bit |
| Brightness (Typical) | LCD Panel: 350 nits Resistive Touch: 280 nits |
| Contrast Ratio | 1000:1 |
| Viewing Angle | Horizontal: 170° Total Vertical: 160° Total |
| Touch Technology | Analog Resistive 5-wire |
| System Hardware | |
| Processor | Intel® Atom™ Processor N2600 1.60 GHz |
| System Chipset | Intel® NM10 Express Chipset |
| System Memory | 2GB DDR3 800/1066 MHz, up to 4GB |

Features and Benefits

- Aluminum alloy construction with powder coating, ensuring exceptional stability
- Optional Transflective LCD meets sunlight readability requirements for navigation and transportation systems
- Complies with marine/DNV standards IEC 60945, DNV 2.4, and IACS-E10
- Multiple mounting options, i.e. panel, and VESA mounts
- Technical support for drivers, hardware, troubleshooting procedures and general system issues
- Customer service and sales support for product selection, order management, and warranty status

| Storage | 32GB Hard Disk Drive |
|---------------------------|--|
| I/O Interfaces | |
| Serial Ports | 1 x RS232/422/485, 2 x RS232 |
| USB Ports | 2 x USB 2.0 |
| Ethernet Ports | 2 x RJ 45-10/100/1000 Mbps |
| VGA Port | 1 x VGA |
| Environmental Conditions | |
| Temperature | Operating: -10°C to 55°C (14°F to 131°F) Storage: -20°C to 60°C (-4°F to 140°F) |
| Humidity (Non-condensing) | 10 to 95% RH @ 40° C |
| Vibration Protection | 5Hz~500Hz / 1Grms / 3 Axis |
| General | |
| Power Input | 9V to 36V DC |
| Operation System Support | Windows Embedded Standard 7 Windows XP Embedded |
| Mounting Options | 100 x 100 mm VESA Mount |
| Dimensions | 483.1 x 444 x 75 mm |
| Approvals | |
| Approvals | CE, FCC (DOC) DNV standards IEC 60945, DNV 2.4, and IACS-E10 |

Order Information

MR19ID3S-A2-5RT: 19" Intel® Atom™ Dual Core N2600 Marine Touch Panel Computer Compliance with IEC 60945, 1280 x 1024 SXGA, 1000:1 contrast ratio

