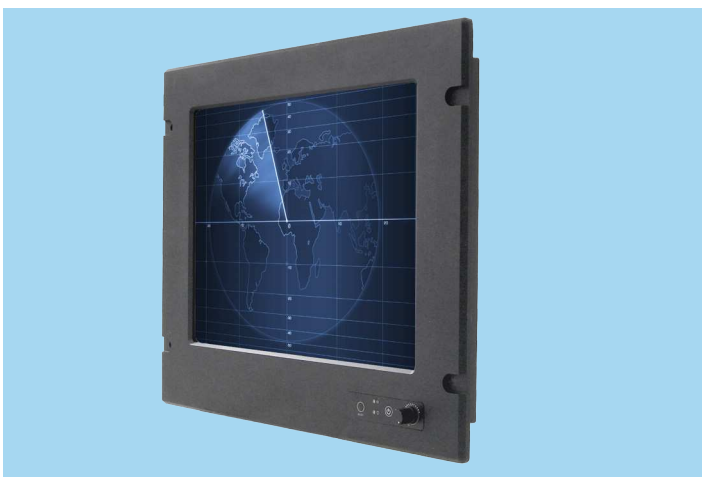


MR10ID3S-M2-5RT

10.4" color TFT, 800 x 600 SVGA, Intel® Atom™ Dual Core N2600 Marine Touch Panel Computer Compliance with IEC 60945, DNV 2.4, and IACS-E10



Introduction

AIS 10.4" marine touch panel computers and operator interface terminals comply with marine equipment standards meeting the demands of IEC 60945, DNV 2.4, and IACS-E10 (international standard for maritime navigation, radio communications equipment and systems) needed to withstand the harsh maritime environment requiring low EMI or long-term vibration resilience. These are designed for bridge control display, navigation, monitoring and surveillance, and ship automation applications; and comply with anti-shock, anti-vibration.

Specifications

Display	
Display	10.4" diagonal, Active matrix TFT LCD
Aspect Ratio	4:3
Active/Area	211.2 (H) x 158.4 (V) mm
Native (Optimal) Resolution	800 x 600 SVGA
Colors	16.2M (6bits+FRC)
Brightness (Typical)	LCD Panel: 400 nits Resistive Touch: 320 nits
Contrast Ratio	500:1
Viewing Angle	Horizontal: 160° Total Vertical: 140° Total
Touch Technology	Analog Resistive 5-wire
System Hardware	
Processor	Intel® Atom™ Processor N2600 1.60 GHz
System Chipset	Intel® NM10 Express Chipset
System Memory	2GB DDR3 800/1066 MHz, up to 4GB

Features and Benefits

- Aluminum alloy construction with powder coating, ensuring exceptional stability
- Optional Transflective LCD meets sunlight readability requirements for navigation and transportation systems
- Complies with marine/DNV standards IEC 60945, DNV 2.4, and IACS-E10
- Multiple mounting options, i.e. panel, and VESA mounts
- Technical support for drivers, hardware, troubleshooting procedures and general system issues
- Customer service and sales support for product selection, order management, and warranty status

Storage	32GB Hard Disk Drive
I/O Interfaces	
Serial Ports	1 x RS232/422/485, 2 x RS232
USB Ports	2 x USB 2.0
Ethernet Ports	2 x RJ 45-10/100/1000 Mbps
VGA Port	1 x VGA
Environmental Conditions	
Temperature	Operating: -10°C to 55°C (14°F to 131°F) Storage: -20°C to 60°C (-4°F to 140°F)
Humidity (Non-condensing)	10 to 95% RH @ 40° C
Vibration Protection	5Hz~500Hz / 1Grms / 3 Axis
General	
Power Input	12V DC Terminal Block (Phoenix Type)
Operation System Support	Windows Embedded Standard 7 Windows XP Embedded
Mounting Options	75 x 75 mm VESA Mount
Dimensions (W x L x H)	339 x 256 x 72 mm
Approvals	
Approvals	CE, FCC (DOC) DNV standards IEC 60945, DNV 2.4, and IACS-E10

Order Information

MR10ID3S-M2-5RT: 10.4" Intel® Atom™ Dual Core N2600 Marine Touch Panel Computer Compliance with IEC 60945, DNV 2.4, and IACS-E10, 800 x 480 SVGA, 500:1 contrast ratio

MR10ID3S-M2-5RT

Dimensions

Unit: mm

