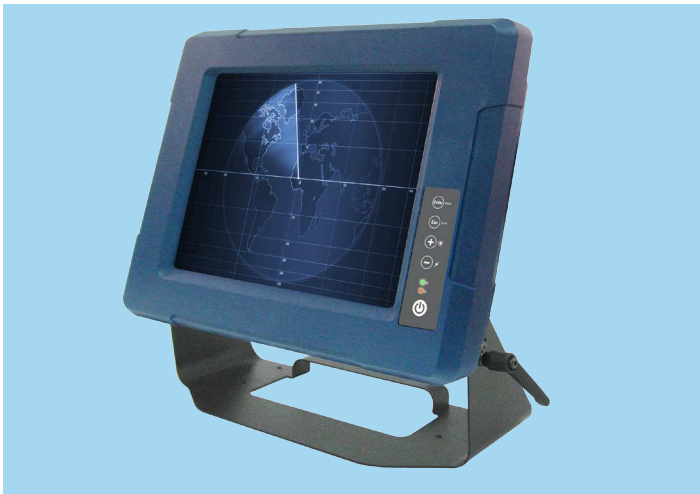


VM08ID3S-T1-5RT

8.4" color TFT, 800 x 600 SVGA, Intel® Atom™ Dual Core D2550 Vehicle Mount Touch Panel Computers Compliance with EN50155 and MIL-STD-810



Introduction

AIS 8.4" vehicle mount touch panel computers are equipped with user-friendly touch-screen interface and wireless connectivity, designed for warehouse management systems, fleet management and dispatch applications. These meet requirements for automotive grade working temperatures of -25 to 55° C and IP65/NEMA 4 rated sealing standards for water and dust protection. These displays are compliant with military ratings for shock, vibration, and drop resistance; all critical for long product life performance. Likewise, HMI touch screen capability built-into rugged vehicle systems allow users to control and monitor real-time data.

Specifications

Display	
Display	8.4" diagonal, Active matrix TFT LCD
Aspect Ratio	4:3
Active/Area	170.4 (H) x 127.8 (V) mm
Native (Optimal) Resolution	800 x 600 SVGA
Colors	16.2M (8 bits + FRC)
Brightness (Typical)	LCD Panel: 450 nits Resistive Touch: 360 nits
Contrast Ratio	600:1
Viewing Angle	Horizontal: 150° Total Vertical: 150° Total
Touch Technology	Analog Resistive 5-wire
System Hardware	
Processor	Intel® Atom™ Processor D2550 1.86 GHz
System Chipset	Intel® NM10 Express Chipset
System Memory	2GB DDR3 800/1066 MHz, up to 4GB

Features and Benefits

- Windows Embedded Standard 7 or Windows XP Embedded operating system support
- Temperature: Operating: -25° to 55° C, Storage: -21° to 63° C
- Humidity: Operating: 10%~95% (Non-Condensing)
- Vibration: MIL-STD 810F method 514.5 5~500 Hz
- Shock: MIL-STD 810F method 516.5 / Acceleration 40G
- Power lead: MIL-STD 461F method CS101 30kHz - 150KHz
- Electrical field: MIL-STD 461F method RE10 2 MHz-40 GHz
- Drop test: MIL-STD 810F method 516.5
- Enclosure class IP65 equivalent follow IEC 60529

Storage	32GB SATA SSD
I/O Interfaces	
Serial Ports	1 x RS232/422/485, 1 x RS232
USB Ports	2 x USB 2.0
Ethernet Ports	2 x RJ 45-10/100/1000 Mbps
VGA Port	1 x VGA
General	
Power Input	9V to 36V DC
Operation System Support	Windows Embedded Standard 7 Windows XP Embedded
Mounting Options	75 x 75 mm VESA Mount
Dimensions (W x L x H)	277 x 219.5 x 59.7 mm
Environmental	
Temperature	Operating: -25°C to 55°C (-13°F to 131°F) Storage: -25°C to 60°C (-13°F to 140°F)
Humidity (Non-condensing)	10 to 95% RH @ 40° C
Vibration Protection	1.60/1.96/2.18 g rms for XYZ / 5-500Hz
Approvals	
Approvals	CE, FCC (DOC) MIL810F/ IEC60068-2-27 for Vibration and Shock

Order Information

VM08ID3S-T1-5RT: 8.4" Intel® Atom™ Dual Core D2550 Vehicle Mount Touch Panel Computers Compliance with EN50155 and MIL-STD-810, 800 x 600 SVGA, 600:1 contrast ratio

Unit: mm

