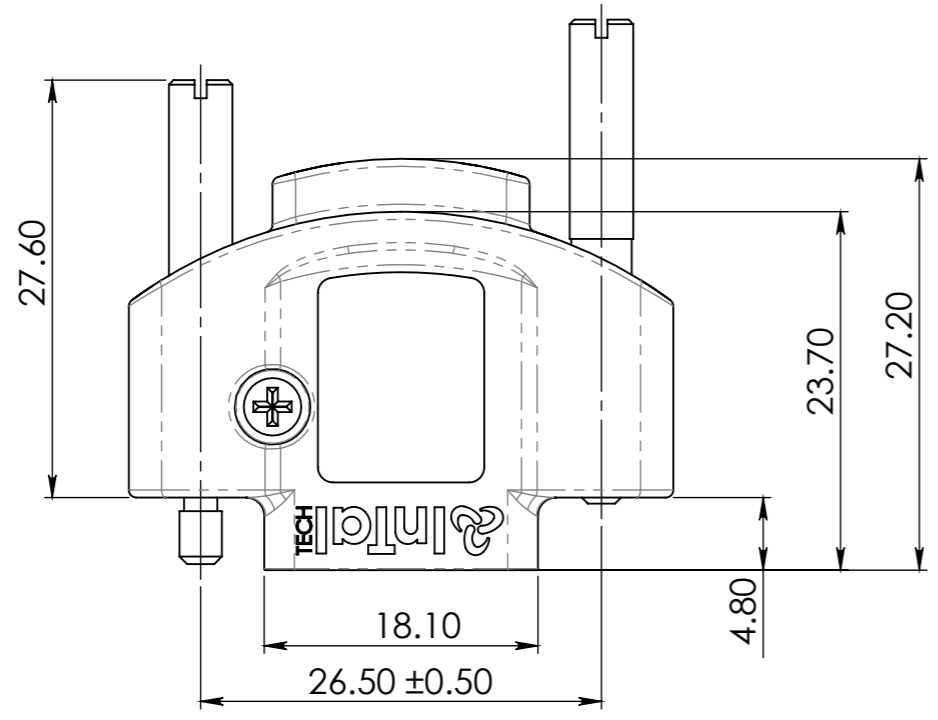
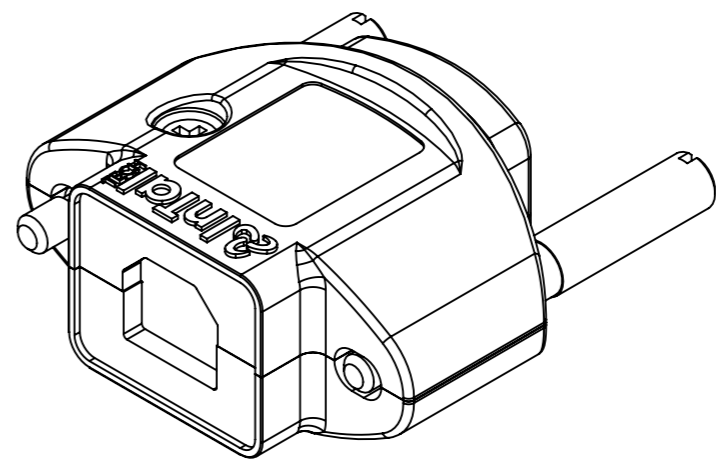
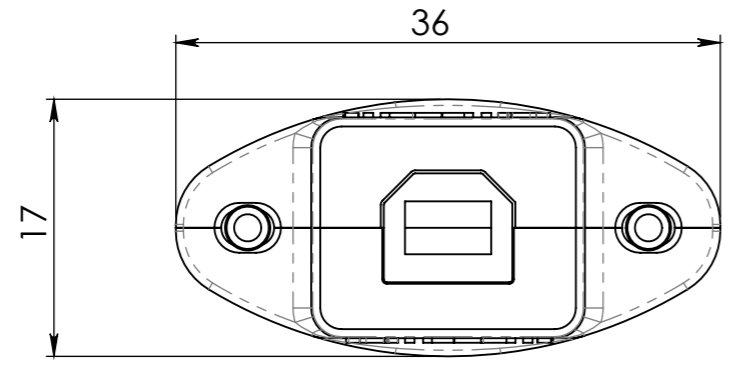


P:\Projects\Projects in R&D Status\InTal Tech\IN09 Backshell for Micro D-Type\0 IN09 Backshell for Micro D-Type\0 IN09-DS-19-A 8/12/2010

1	2	3	4	5	6	7	8
ZONE		REV.	DESCRIPTION		DATE	APPROVED	
		A	PRERELEASE		21/07/2010	IGOR	



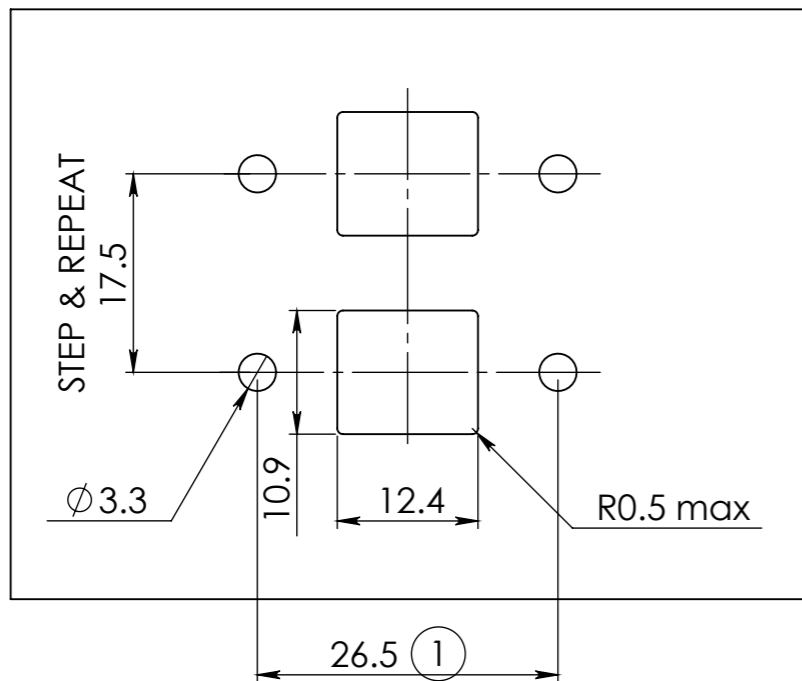
**DRAFT**

- NOTE:
- FOR P/N DESCRIPTION OF USB B FEM CONNECTOR PLEASE CONTACT InTaltech ENGINEERING/SALES DEPARTMENT
  - PLASTIC HOOD - BLACK POLYAMIDE PA6, UL94, V-0
  - FASTENING - #4-40UNC JACK SCREW - STAINLESS STEEL
  - SCREW FOR PLASTIC - STEEL, BLACK PASSIVATION

TOLERANCES UNLESS OTHERWISE STATED			MATERIAL:	FINISH:			
LINEAR ±	HOLES DIA +						
ANGULAR ±	MASH. SURF'S						
	NAME	SIGNATURE	DATE	TITLE			
DRAWN	GREGORY			<b>KIT,USB B PLASTIC BACKSHELL</b>			
DESN'D	GREGORY			PROJECT			
CHK'D				PART. NO. IN09-KT-19			
APPV'D				VERSION			
THIS DOCUMENT CONTAINS PROPRIETARY INFORMATION AND SHALL NOT BE PUBLISHED OR USED FOR ANY PURPOSE WITHOUT THE PRIOR WRITTEN PERMISSION OF INTALTECH Ltd. DO NOT MANUALLY UPDATE. DO NOT SCALE DRAWING.		Engineering Development & Consulting		DWG NO.	REV.	SHEET	
				<b>IN09-DS-19-A</b>		A	1/2
				SIZE	FIRST ANGLE PROJECTION	DIM UNIT	SCALE
A3		MM	2:1				

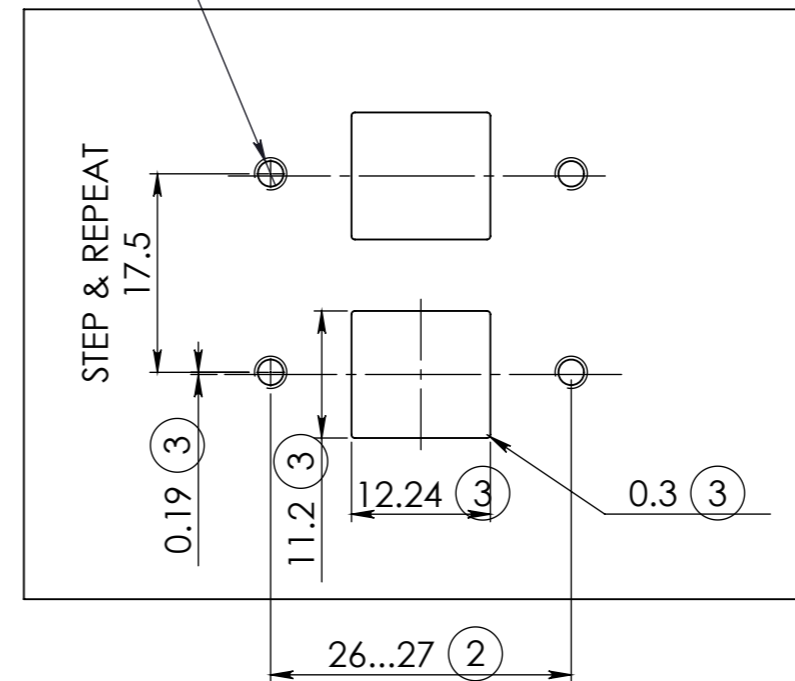
P:\Projects\Projects in R&D Status\InTal Tech\IN09 Backshell for Micro D-Type\IN09-DS-19-A 8/12/2010

### CABLE MOUNTING PANEL CUTOUT

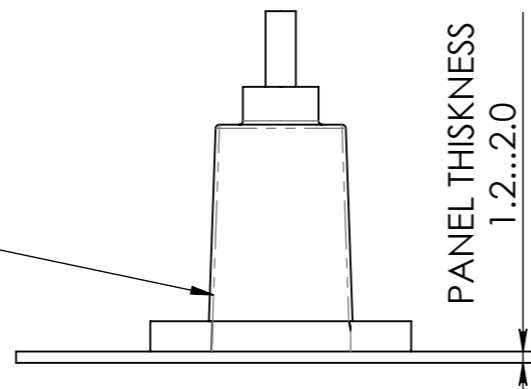


### PCB MOUNTING PANEL CUTOUT

4 x  
THREAD #4-40 UNC

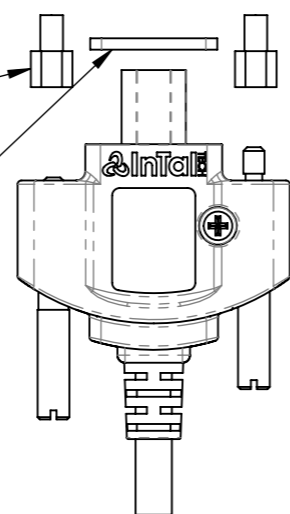


USB B FEM CONNECTOR  
W CABLE  
P/N: SEE NOTE  
TO BE ORDERED  
SEPARATELY



SPACER  
MALE-FEMALE #4-40x3/16  
P/N: HSO0404HH0  
TO BE ORDERED  
SEPARATELY QTY.x 2

ENVIROMENTAL GASKET  
P/N: IN09-PF-63  
TO BE ORDERED  
SEPARATELY



- ① - ACCORDING USB B FEM CONNECTOR
- ② - DIMENSION POSSIBLE FROM 26mm UP TO 27mm
- ③ - ACCORDING CONNECTOR P/N: USB-B-S-X-X-TH "SAMTEC"

THIS DOCUMENT CONTAINS PROPRIETARY INFORMATION AND SHALL NOT BE PUBLISHED OR USED FOR ANY PURPOSE WITHOUT THE PRIOR WRITTEN PERMISSION OF A&J. DO NOT MANUALLY UPDATE. DO NOT SCALE DRAWING.	 Engineering Development & Consulting	PART. NO. <b>IN09-KT-19</b>	VERSION	
		DWG NO. <b>IN09-DS-19-A</b>	REV. <b>A</b>	SHEET <b>2/2</b>
		SIZE <b>A3</b>	FIRST ANGLE PROJECTION	DIM UNIT MM