

PS200-48-32-GR

Wide range AC/DC Power Supply
Single Output switchable to 32V or 48V

- Input can be connected to street lighting for use at outdoor events
- Output suitable for stepper motors including moving-head lighting systems

INPUT

Input Voltage:	90 – 277V RMS
Frequency:	47-63Hz
Inrush Current:	25A max., cold start at 25°C, 120VAC 50A max., cold start at 25°C, 250VAC
Power Factor:	0.90 typical at 230VAC, full load 0.95 typical at 115VAC, full load
Efficiency:	86% typical at 230VAC, full load 82% typical at 115VAC, full load



Output Voltages, Currents and Regulation Set Point – V1A & V1B

Output	Output Voltage	Minimum Load	Maximum Load	Peak Load
V1A	32V	0	6.2A	7.2A
V1B	48V	0	4.2A	4.5A

Line Regulation:	±0.2% for Input Change from Vin (Min) to Vin (Max)
Load Regulation:	±0.4% for load change from zero to full load
Ripple & Noise:	150mVp-p Max. 20Mhz BW
Hold-Up Time:	16msec minimum at full load
Over-current Protection:	YES
Over-voltage Protection:	YES
Over-temperature Protection:	YES

ENVIRONMENTAL SPECIFICATIONS

Operating Temperature:	-40°C (will switch on) to +50°C (de-rating linearly to 70°C at 2.5%/°C)
Temperature Coefficient:	0 to 70°C ± 0.02%/°C
Cooling:	100W free convection cooling (base plate cooling) 200W (forced air cooling – 250 LFM)
Humidity:	5% to 95% RH non-condensing

SAFETY REGULATORY & EMC SPECIFICATIONS

MEETS FCC CLASS B, CISPR 22 CLASS B, EN55022 CLASS B. With external line filter.

Safety Agency Compliance:

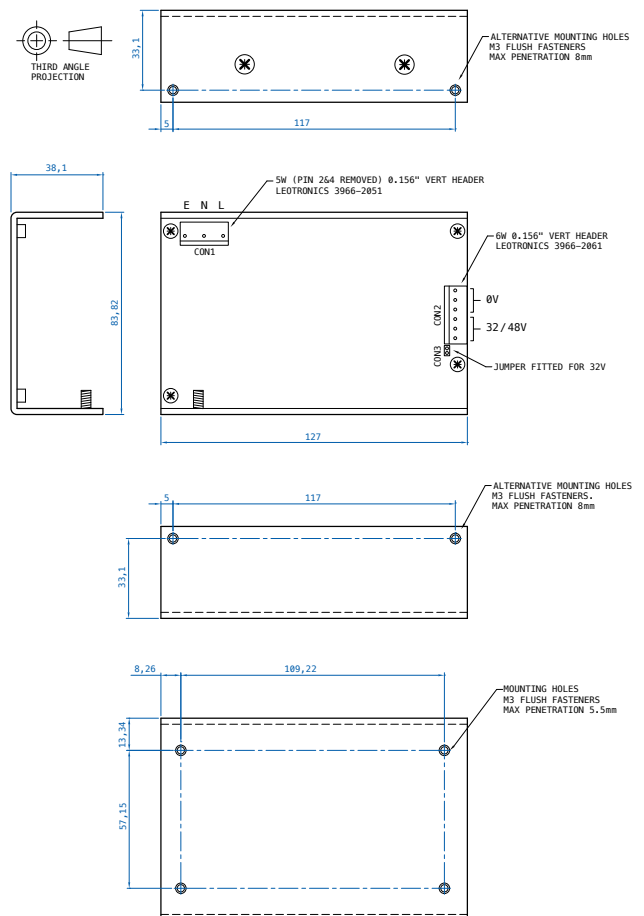
UL 60950-1; CSA C22.2 -234, LEVEL 3;
EN-60950-1, CLASS 1, SELF CE-MARK

Leakage current: <500µA @50/60 Hz, 264VAC input
MTBF: 300,000 hours minimum per BELCOR 332, issue 6 specification at 30°C.
(Max. junction temperature 110°C, Capacitors 105°C)

Size: 127 x 84 x 38mm (3.3 x 5.0 x 1.5")

Weight: 700gr. max. (26oz)

Outline Drawing



All specifications are subject to change without notice.

DRAFT

Tel: +44 (0) 1722 413060
Fax: +44 (0) 1722 413034

sales@greshampower.com
www.greshampower.com

gresham
power electronics