

THE INFORMATION CONTAINED HEREIN IS CONSIDERED "PROPRIETARY" TO BEL FUSE INC. AND SHALL NOT BE COPIED, REPRODUCED OR DISCLOSED WITHOUT THE WRITTEN APPROVAL OF BEL FUSE INC.

LED 1 POLARITY			LED 2 POLARITY		
PIN 7	PIN 8	COLOR	PIN 9	PIN 10	COLOR
-	+	GREEN	-	+	GREEN
+	-	YELLOW			

PRELIMINARY

ELECTRICAL CHARACTERISTICS @ 25°C

TURNS RATIO

TX	1CT : 1
RX	1CT : 1
DCL @ 100kHz/100mVRMS 8mA DC BIAS	350μH MIN.
INS. LOSS 1MHz TO 100MHz	-1.0 dB MAX
RET. LOSS (MIN) 1MHz-30MHz	-18 dB
30MHz-60MHz	-18+20LOG(F/30MHz) dB
60MHz-80MHz	-12 dB
CROSS TALK (TX - RX) 500kHz-100MHz	-35 dB MIN
CM TO CM REJ 100kHz-100MHz	-30 dB MIN
CM TO DM REJ 100kHz-100MHz	-35 dB MIN
HIPOT (Isolation Voltage): 100% OF PRODUCTION TESTED TO COMPLY WITH IEEE 802.3 ISOLATION REQUIREMENTS.	1500 Vrms

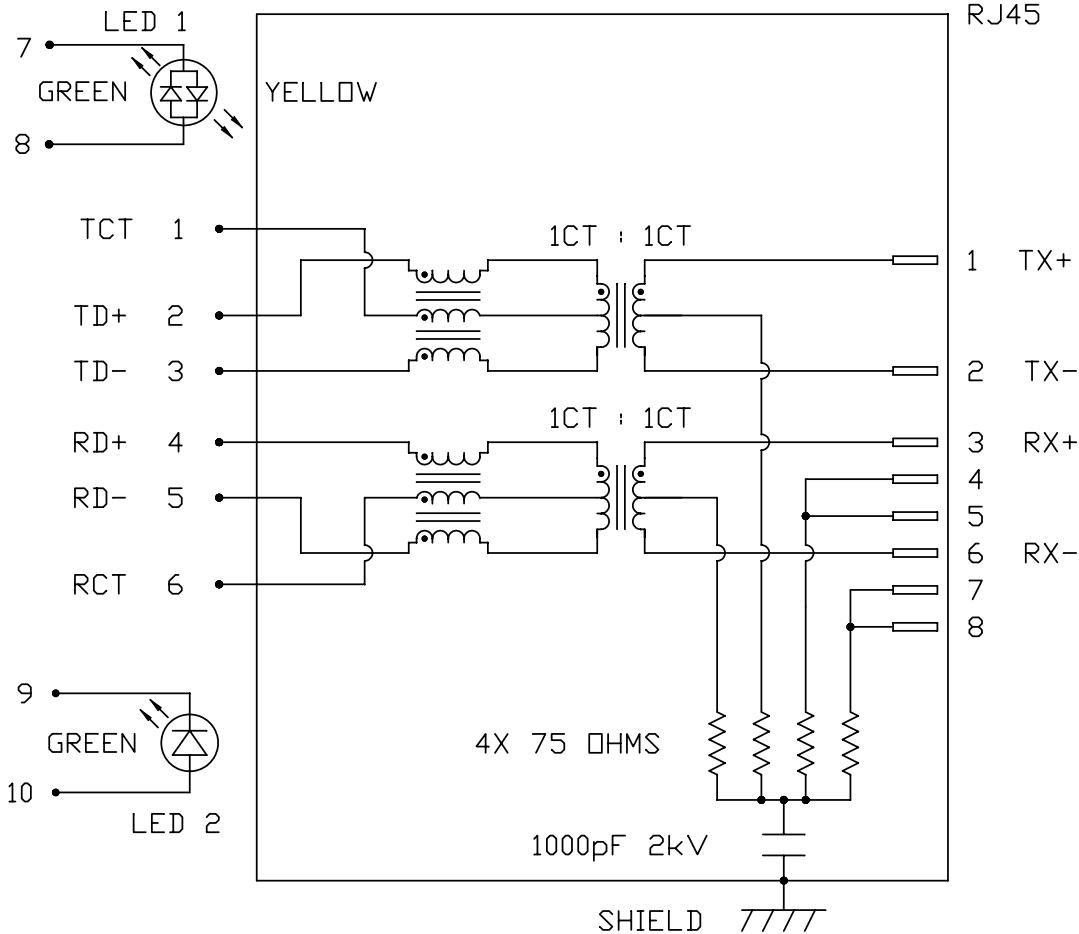
LED 1

VF (FORWARD VOLTAGE)	IF=20mA	GREEN	2.2V TYP.
		YELLOW	2.1V TYP.
λD (DOMINANT WAVELENGTH)	IF=20mA	GREEN	565nm TYP.
		YELLOW	590nm TYP.

LED 2

VF (FORWARD VOLTAGE)	IF=20mA	GREEN	2.2V TYP.
λD (DOMINANT WAVELENGTH)	IF=20mA	GREEN	565nm TYP.

SCHEMATIC




ORIGINATED BY	DATE
CHOW WANGCHUNG	05-26-10
DRAWN BY	DATE
LEE WEIDE	05-26-10

TITLE
1X4 MagJack® (LOW PROFILE)

PART NO. / DRAWING NO.
L826-1L4T-76
FILE NAME
L826-1L4T-76_PB.DWG

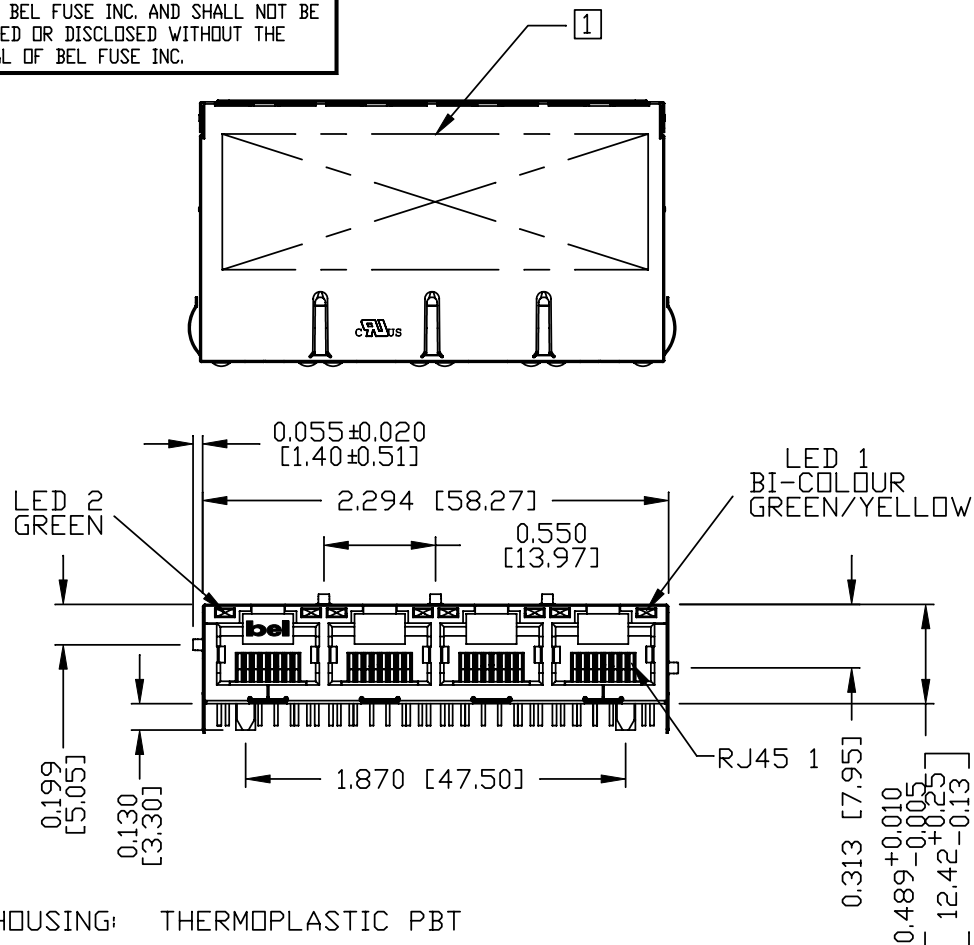
STANDARD DIM.
TOL. IN INCH
.X
.XX
.XXX

[ ] METRIC DIM. AS REFERENCE	
UNIT : INCH [mm]	REV. : PB
SCALE : N/A	SIZE : A4
	PAGE : 2



THE INFORMATION CONTAINED HEREIN IS CONSIDERED "PROPRIETARY" TO BEL FUSE INC. AND SHALL NOT BE COPIED, REPRODUCED OR DISCLOSED WITHOUT THE WRITTEN APPROVAL OF BEL FUSE INC.

PRELIMINARY



# NOTES:

PLASTIC HOUSING: THERMOPLASTIC PBT  
 FLAMMABILITY RATING UL 94V-0  
 CONTACTS PLATING: 50 MICRO-INCH HARD GOLD PLATING  
 PINS: TIN-COATED COPPER WIRE, DIA 0.018 INCH.  
 METAL SHIELD: NICKEL PLATED ON COPPER ALLOY.  
 (ALL GROUND LEADS ARE SOLDER DIPPING)

[1] MARK PART WITH MFG LOGO, MFG NAME, PART NUMBER, DATE CODE AND PATENTED.

UL RECOGNIZED - FILE #E196366 AND E169987.  
 JACK CAVITY CONFORMS TO FCC RULES AND REGULATIONS.

2. THE PRODUCT IS PATENT PRODUCT. THE PATENT NUMBER ARE U.S. PAT. 5,736,910 AND U.S. PAT. 7,123,117.

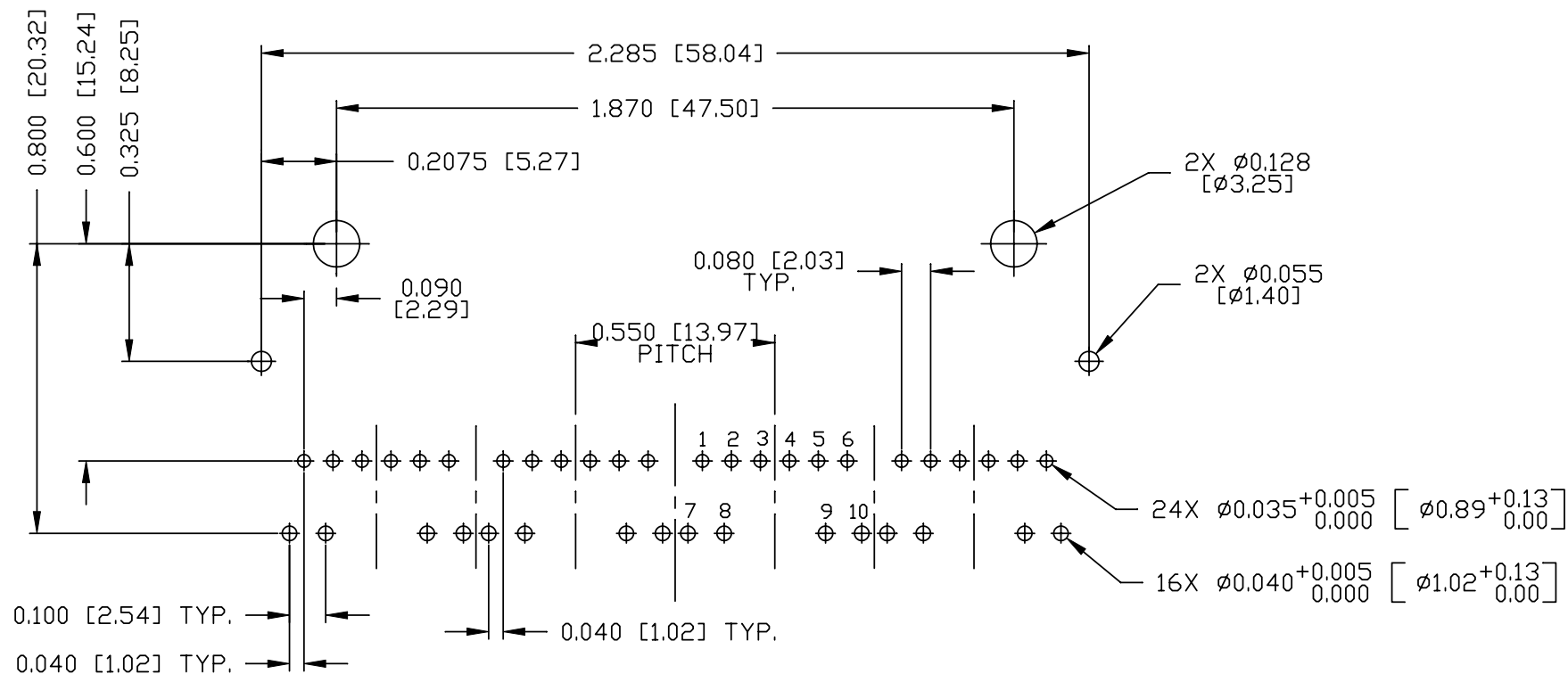
ORIGINATED BY	DATE	TITLE	PART NO. / DRAWING NO.	STANDARD DIM. TOL. IN INCH	[ ] METRIC DIM. AS REFERENCE	
ANTON LIAO	05-26-10	1X4 MagJack® (LOW PROFILE)	L826-1L4T-76	.X	UNIT : INCH [mm]	REV. : PB
DRAWN BY	DATE			.XX	SCALE : N/A	SIZE : A4
SHAWN FENG	05-26-10			.XXX	⌀	PAGE : 3



THE INFORMATION CONTAINED HEREIN IS CONSIDERED  
"PROPRIETARY" TO BEL FUSE INC. AND SHALL NOT BE  
COPIED, REPRODUCED OR DISCLOSED WITHOUT THE  
WRITTEN APPROVAL OF BEL FUSE INC.

PRELIMINARY

RECOMMENDED PCB FOOTPRINT  
(COMPONENT SIDE VIEW)



ORIGINATED BY	DATE
ANTON LIAO	05-26-10
DRAWN BY	DATE
SHAWN FENG	05-26-10

TITLE
1X4 MagJack® (LOW PROFILE)

PART NO. / DRAWING NO.
L826-1L4T-76
FILE NAME
L826-1L4T-76_PB.DWG

STANDARD DIM.	
TOL. IN INCH	
.X	
.XX	
.XXX	±0.004

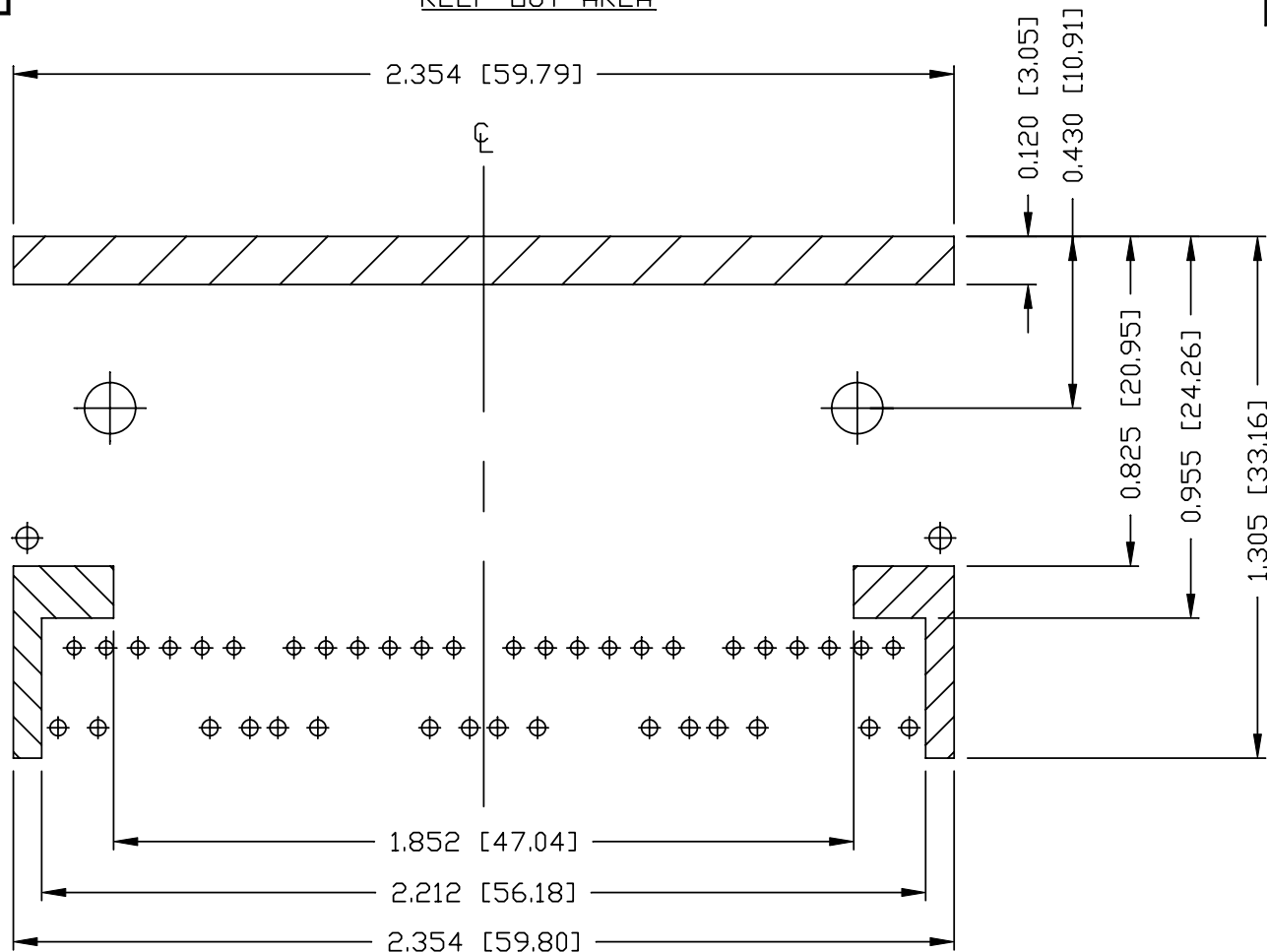
[ ] METRIC DIM. AS REFERENCE	
UNIT : INCH [mm]	REV. : PB
SCALE : N/A	SIZE : A4
	PAGE : 4

**bel**  
COMPONENTS FOR A  
CONNECTED  
PLANET

THE INFORMATION CONTAINED HEREIN IS CONSIDERED  
"PROPRIETARY" TO BEL FUSE INC. AND SHALL NOT BE  
COPIED, REPRODUCED OR DISCLOSED WITHOUT THE  
WRITTEN APPROVAL OF BEL FUSE INC.

KEEP OUT AREA

PRELIMINARY



NOTES

THE SHADED AREA ON THE CUSTOMER BOARD ARE  
RECOMMENDED TO BE CLEAR OFF ANY VIA HOLE OR  
COMPONENT PAD.

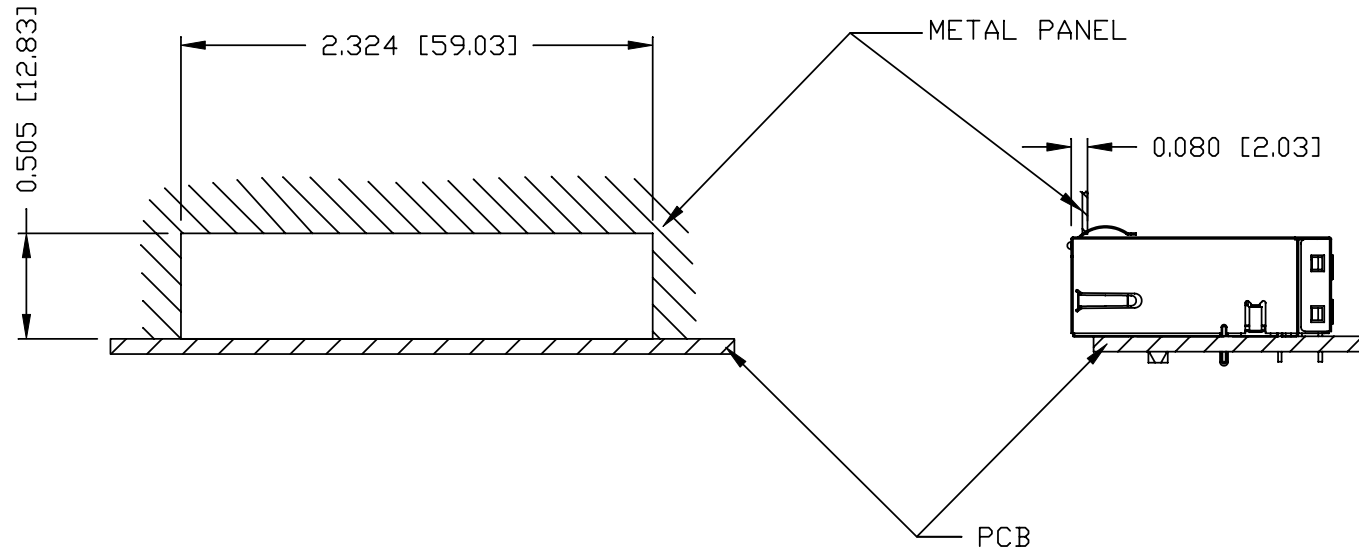
ORIGINATED BY	DATE	TITLE	PART NO. / DRAWING NO.	STANDARD DIM. TOL. IN INCH		[ ] METRIC DIM. AS REFERENCE	
						UNIT : INCH [mm]	REV. : PB
ANTON LIAO	05-26-10	1X4 MagJack® (LOW PROFILE)	L826-1L4T-76	.X		SCALE : N/A	SIZE : A4
DRAWN BY	DATE			.XX			PAGE : 5
SHAWN FENG	05-26-10			.XXX	±0.004		



THE INFORMATION CONTAINED HEREIN IS CONSIDERED "PROPRIETARY" TO BEL FUSE INC. AND SHALL NOT BE COPIED, REPRODUCED OR DISCLOSED WITHOUT THE WRITTEN APPROVAL OF BEL FUSE INC.

## SUGGESTED PANEL OPENING

PRELIMINARY



### NOTE:

THE DISTANCE OF PANEL INSIDE SURFACE RELATIVE TO FRONT SURFACE OF PART IS ONLY A SUGGESTION. IN CASE THIS DISTANCE IS DIFFERENT, THE REQUIRED PANEL OPENING DIMENSIONS CHANGE ACCORDINGLY.

### PACKING INFORMATION

PACKING TRAY: 0200-9999-D3 (TOP)

0200-9999-B5 (BOTTOM)

PACKING QUANTITY: 24 PCS FINISHED GOODS PER TRAY

10 TRAYS (240PCS FINISHED GOODS) PER CARTON BOX

REMARK : CARDBOARDS ARE PLACED BETWEEN LAYERS OF PACKING TRAY INSIDE CARTON BOX.  
(INCLUDE THE UPPERMOST AND LOWERMOST TRAY)

ORIGINATED BY	DATE	TITLE	PART NO. / DRAWING NO.	STANDARD DIM. TOL. IN INCH	[ ] METRIC DIM. AS REFERENCE	
ANTON LIAO	05-26-10	1X4 MagJack® (LOW PROFILE)	L826-1L4T-76	.X	UNIT : INCH [mm]	REV. : PB
DRAWN BY	DATE		FILE NAME	.XX	SCALE : N/A	SIZE : A4
SHAWN FENG	05-26-10		L826-1L4T-76_PB.DWG	.XXX ±0.004	⊕ - - -	PAGE : 6

