

THE INFORMATION CONTAINED HEREIN IS CONSIDERED "PROPRIETARY" TO BEL FUSE INC. AND SHALL NOT BE COPIED, REPRODUCED OR DISCLOSED WITHOUT THE WRITTEN APPROVAL OF BEL FUSE INC.

LED1 POLARITY			LED2 POLARITY		
PIN 13	PIN 14	COLOR	PIN 15	PIN 16	COLOR
-	+	GREEN	+	-	ORANGE
/	/	/	-	+	GREEN

PRELIMINARY



ELECTRICAL CHARACTERISTICS @ 25°C

TURNS RATIO 1CT : 1CT ±2%
 OCL @ 100kHz/100mVRMS 350µH MIN.
 8mA DC BIAS (0°C - 70°C)

INS. LOSS 100kHz TO 100MHz -1.5 dB MAX

RET. LOSS (MIN) @ 100ΩHMS ±15%
 2MHz-30MHz -16 dB MIN.
 60MHz-80MHz -10 dB MIN.

D.C. RESISTANCE
 (1-8)=(2-9) 1.0 ΩHMS MAX.
 (RJ1-RJ2)=(RJ3-RJ6) 1.4 ΩHMS MAX.

INTERWINDING CAPACITANCE
 PER CHANNEL (PRI. to SEC) 40 pF MAX.

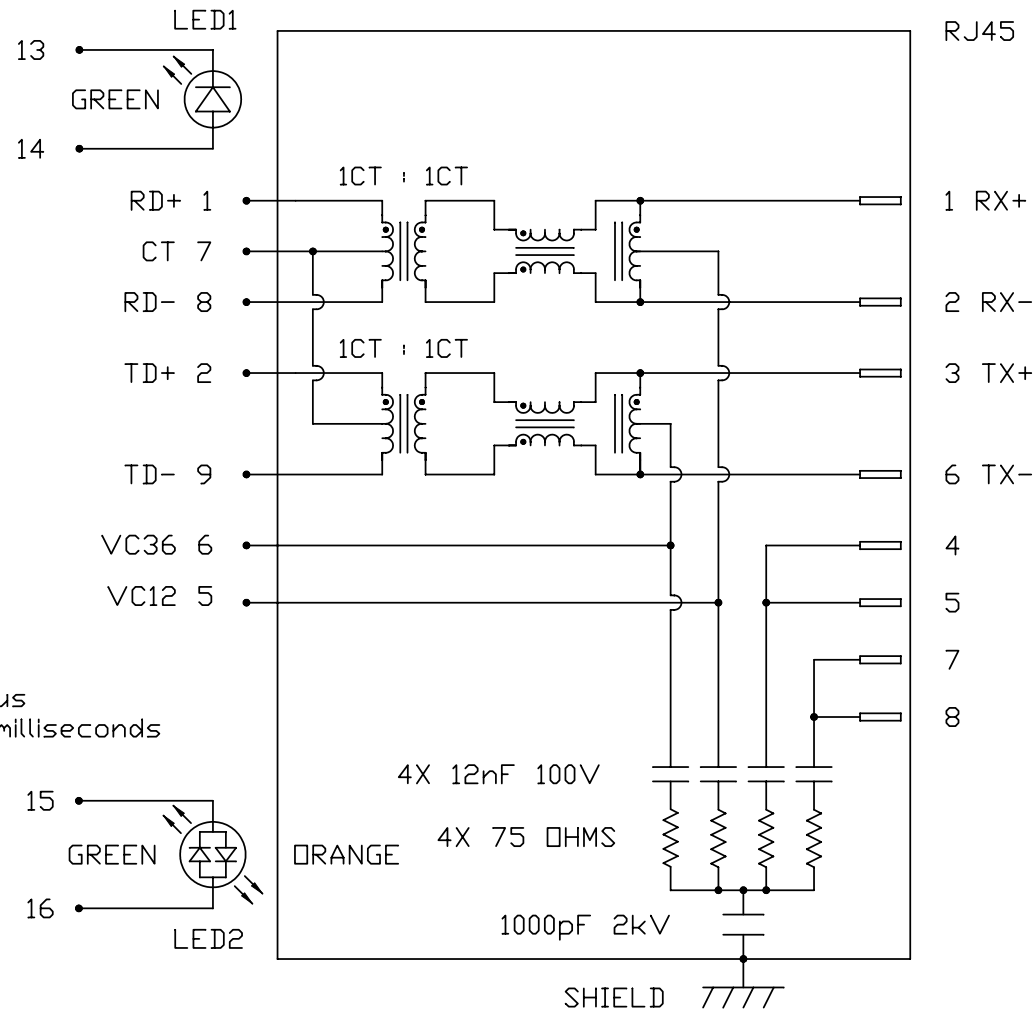
CROSS TALK 100kHz - 100MHz -30 dB MIN.

HIPOT (Isolation Voltage) 2250 VDC
 100% OF PRODUCT TESTED IN PRODUCTION
 TO COMPLY WITH IEEE 802.3 REQUIREMENTS

BALANCED DC LINE CURRENT 350mA MAX. @ 57 VDC continuous
 500mA MAX. @ 57 VDC for 200 milliseconds

LED 1
 VF (FORWARD VOLTAGE) IF=20mA GREEN 2.2V TYP.
 λD (DOMINANT WAVELENGTH) IF=20mA GREEN 565nm TYP.

LED 2
 VF (FORWARD VOLTAGE) IF=20mA GREEN 2.2V TYP.
 ORANGE 2.0V TYP.
 λD (DOMINANT WAVELENGTH) IF=20mA GREEN 565nm TYP.
 ORANGE 610nm TYP.



ORIGINATED BY	DATE	TITLE
CHOW WANCHUNG	05-29-10	1X4 MagJack®
DRAWN BY	DATE	(Low profile, VOIP)
LEE WEIDE	05-29-10	L826-1E4M-75-F

PART NO. / DRAWING NO.	STANDARD DIM.	[] METRIC DIM. AS REFERENCE
L8261E4M75-F	TOL. IN INCH	UNIT : INCH [mm] REV. : PD
FILE NAME	.X	SCALE : N/A SIZE : A4
L8261E4M75-F_PD.DWG	.XX	⊕ - - - - PAGE : 2
	.XXX	

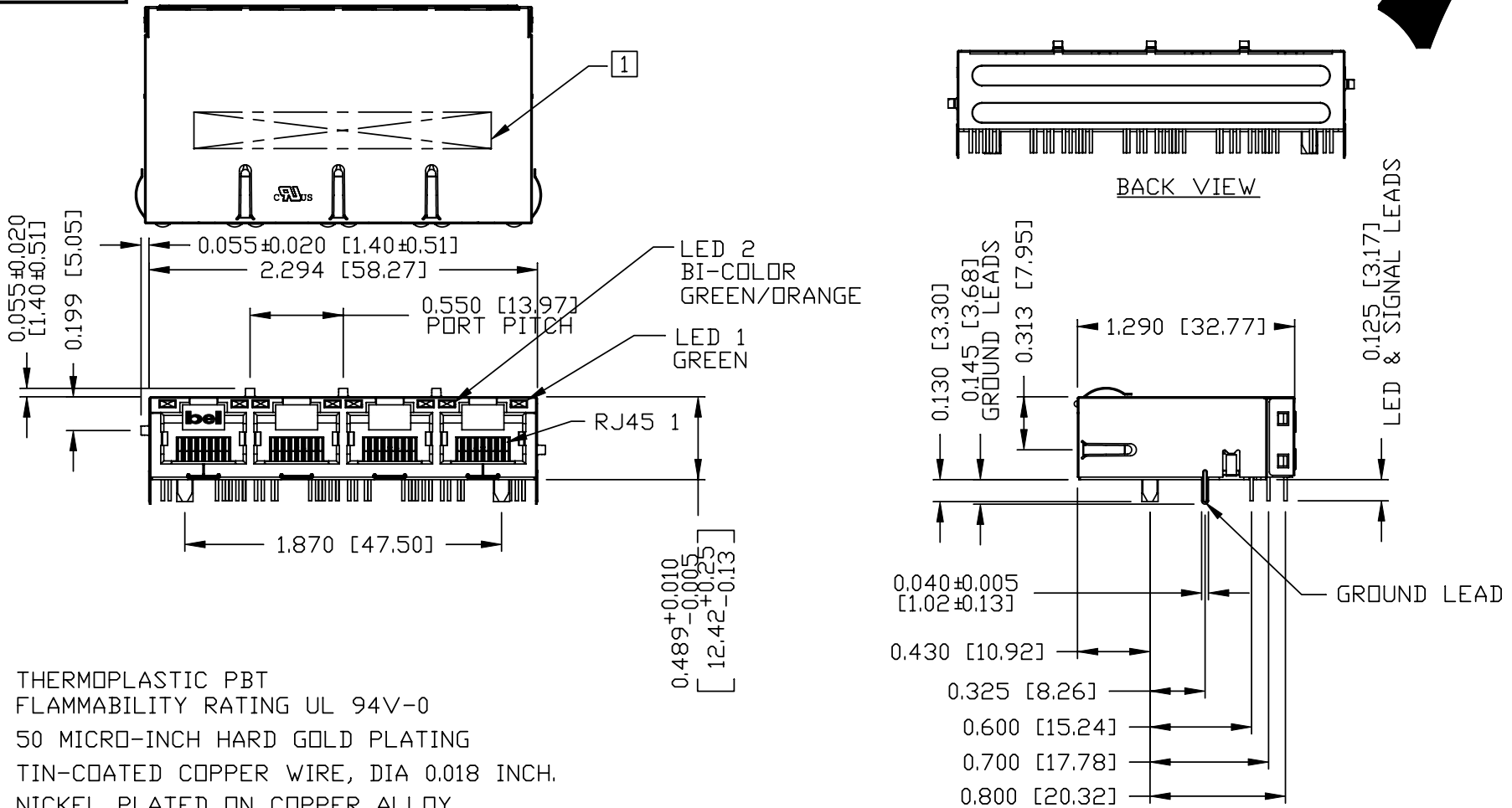
REVISIONS	DATE	DESCRIPTION



THE INFORMATION CONTAINED HEREIN IS CONSIDERED "PROPRIETARY" TO BEL FUSE INC. AND SHALL NOT BE COPIED, REPRODUCED OR DISCLOSED WITHOUT THE WRITTEN APPROVAL OF BEL FUSE INC.

PRELIMINARY

RoHS
2002/95/EC



NOTES:

PLASTIC HOUSING: THERMOPLASTIC PBT
FLAMMABILITY RATING UL 94V-0

CONTACTS PLATING: 50 MICRO-INCH HARD GOLD PLATING

PINS: TIN-COATED COPPER WIRE, DIA 0.018 INCH.

METAL SHIELD: NICKEL PLATED ON COPPER ALLOY.
(ALL GROUND LEADS ARE SOLDER DIPPING)

1. MARK PART WITH MFG LOGO, MFG NAME, PART NUMBER
DATE CODE AND PATENTED.

c USUL RECOGNIZED - FILE #E196366 AND E169987.

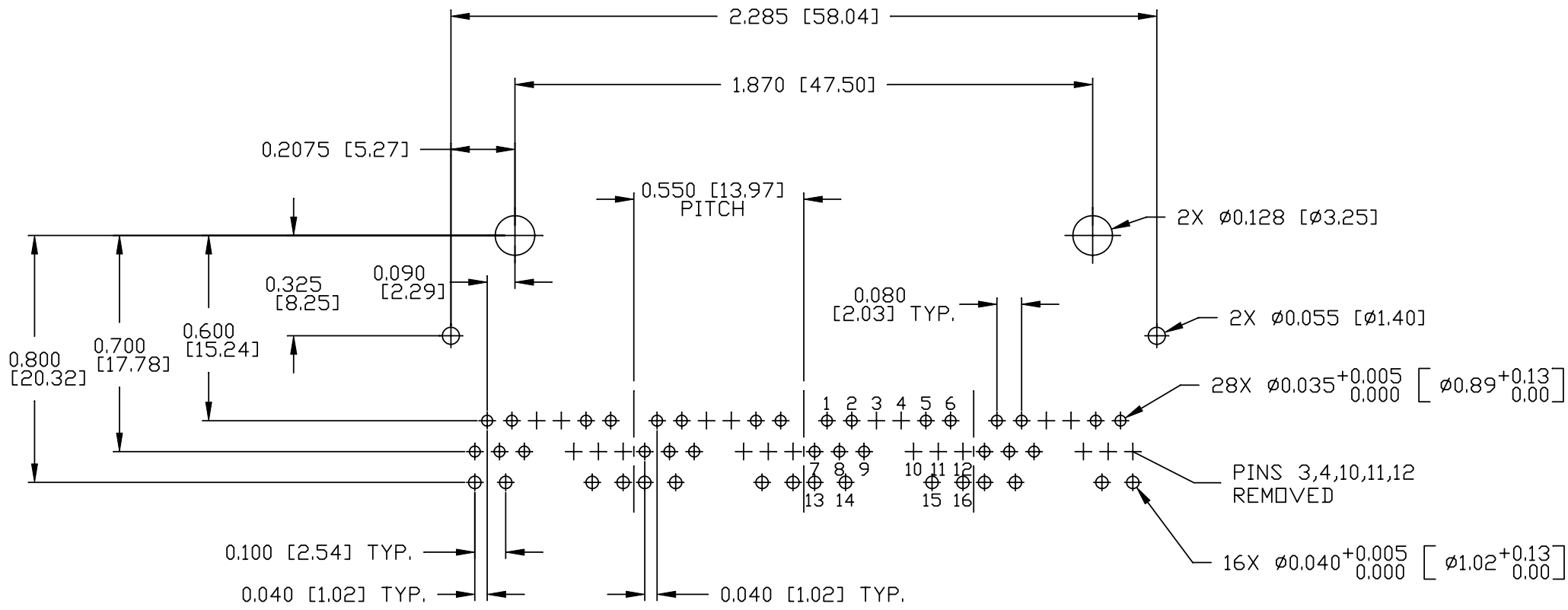
2. RoHS COMPLIANCE, PER EU DIRECTIVE 2002/95/EC.
JACK CAVITY CONFORMS TO FCC RULES AND REGULATIONS.
3. THE PRODUCT IS PATENT PRODUCT. THE PATENT
NUMBER IS U.S. PAT. 5,736,910.

ORIGINATED BY	DATE	TITLE	PART NO. / DRAWING NO.	STANDARD DIM. TOL. IN INCH	[] METRIC DIM. AS REFERENCE
ANTON LIAO	05-29-10	1X4 MagJack® (Low profile, VOIP)	L8261E4M75-F	.X	UNIT : INCH [mm] REV. : PD
DRAWN BY	DATE	L826-1E4M-75-F	FILE NAME	.XX	SCALE : N/A SIZE : A4
SHAWN FENG	05-29-10		L8261E4M75-F_PD.DWG	.XXX ±0.010	⊕ - - - - PAGE : 3



THE INFORMATION CONTAINED HEREIN IS CONSIDERED "PROPRIETARY" TO BEL FUSE INC. AND SHALL NOT BE COPIED, REPRODUCED OR DISCLOSED WITHOUT THE WRITTEN APPROVAL OF BEL FUSE INC.

PRELIMINARY



RECOMMENDED PCB FOOTPRINT
(COMPONENT SIDE VIEW)

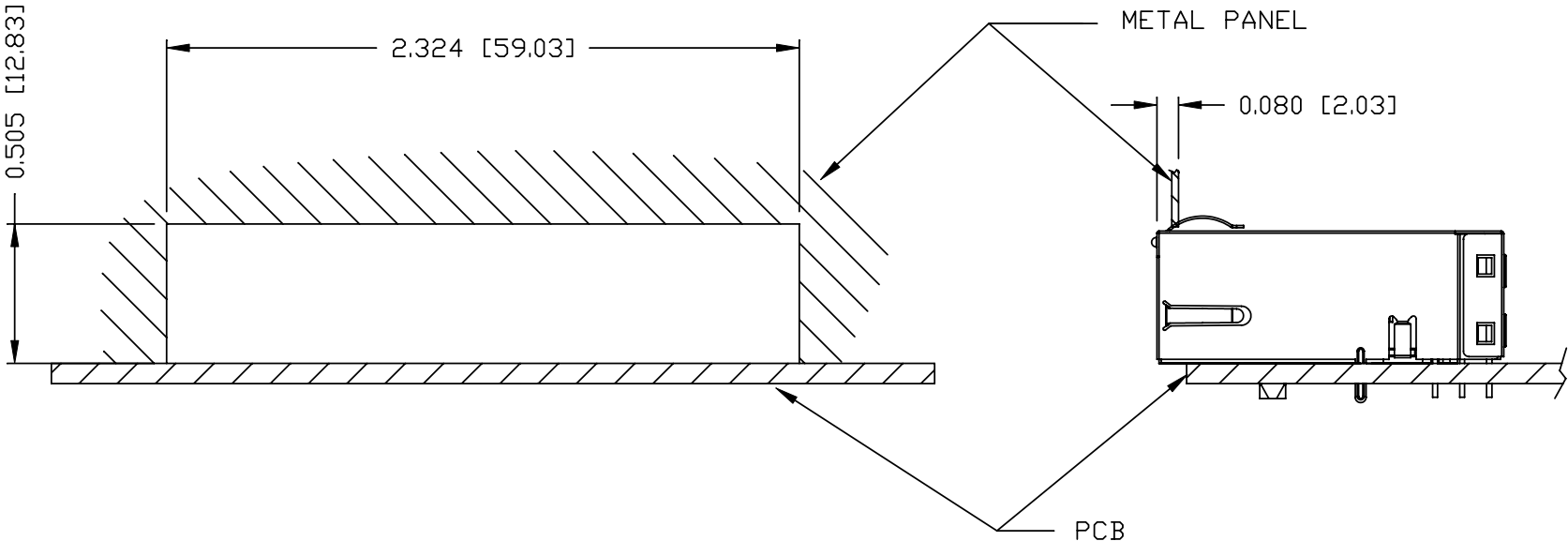
ORIGINATED BY	DATE	TITLE	PART NO. / DRAWING NO.	STANDARD DIM. TOL. IN INCH	[] METRIC DIM. AS REFERENCE	 COMPONENTS FOR A CONNECTED PLANET	
ANTON LIAO	05-29-10	1X4 MagJack® (Low profile, VOIP) L826-1E4M-75-F	L8261E4M75-F	.X	UNIT : INCH [mm]		REV. : PD
DRAWN BY	DATE		FILE NAME	.XX	SCALE : N/A		SIZE : A4
SHAWN FENG	05-29-10	L826-1E4M-75-F	L8261E4M75-F_PD.DWG	.XXX ±0.004			PAGE : 4

THE INFORMATION CONTAINED HEREIN IS CONSIDERED "PROPRIETARY" TO BEL FUSE INC. AND SHALL NOT BE COPIED, REPRODUCED OR DISCLOSED WITHOUT THE WRITTEN APPROVAL OF BEL FUSE INC.

PRELIMINARY



SUGGESTED PANEL OPENING



NOTE:

THE DISTANCE OF PANEL INSIDE SURFACE RELATIVE TO FRONT SURFACE OF PART IS ONLY A SUGGESTION. IN CASE THIS DISTANCE IS DIFFERENT, THE REQUIRED PANEL OPENING DIMENSIONS CHANGE ACCORDINGLY.

PACKING INFORMATION

PACKING TRAY: 0200-9999-D3 (TOP)
 0200-9999-B5 (BOTTOM)
 PACKING QUANTITY: 24 PCS FINISHED GOODS PER TRAY
 10 TRAYS (240PCS FINISHED GOODS) PER CARTON BOX
 REMARK: CARDBOARDS ARE PLACED BETWEEN LAYERS OF PACKING TRAY INSIDE CARTON BOX
 (INCLUDE THE UPPERMOST AND LOWERMOST TRAY)

ORIGINATED BY	DATE	TITLE 1X4 MagJack® (Low profile,VOIP)	PART NO. / DRAWING NO. L8261E4M75-F	STANDARD DIM. TOL. IN INCH		[] METRIC DIM. AS REFERENCE		 COMPONENTS FOR A CONNECTED PLANET
ANTON LIAO	05-29-10			FILE NAME	.X		UNIT : INCH [mm]	
DRAWN BY	DATE	L826-1E4M-75-F	.XX		SCALE : N/A	SIZE : A4		
SHAWN FENG	05-29-10	L8261E4M75-F_PD.DWG	.XXX	±0.004		PAGE : 5		