

THE INFORMATION CONTAINED HEREIN IS CONSIDERED
"PROPRIETARY" TO BEL FUSE INC. AND SHALL NOT BE
COPIED, REPRODUCED OR DISCLOSED WITHOUT THE
WRITTEN APPROVAL OF BEL FUSE INC.

RoHS
2002/95/EC



PRELIMINARY

SCHEMATIC

ELECTRICAL CHARACTERISTICS @ 25°C

URNS RATIO

TX 1CT : 1CT ±3%
RX 1CT : 1CT ±3%

CL @ 100kHz,100mVRMS

8mA DC BIAS 350uH MIN

INS. LOSS

100kHz TO 100MHz -1.1 dB MAX

RET. LOSS

1MHz-30MHz -18 dB MIN

30MHz-80MHz -12 dB MIN

CM TO CM REJ

100kHz - 100MHz -30 dB Min

CM TO DM REJ

100kHz - 100MHz -35 dB Min

CROSS TALK

1MHz - 100MHz -30 dB Min

HIPOT (Isolation Voltage):

1500 Vrms

100% OF PRODUCTION TESTED TO COMPLY WITH

IEEE 802.3 ISOLATION REQUIREMENTS.

INTERWINDING CAPACITANCE

PER CHANNEL (PRI. TO SEC.) 30pF Max @ 1MHz

DC RESISTANCE

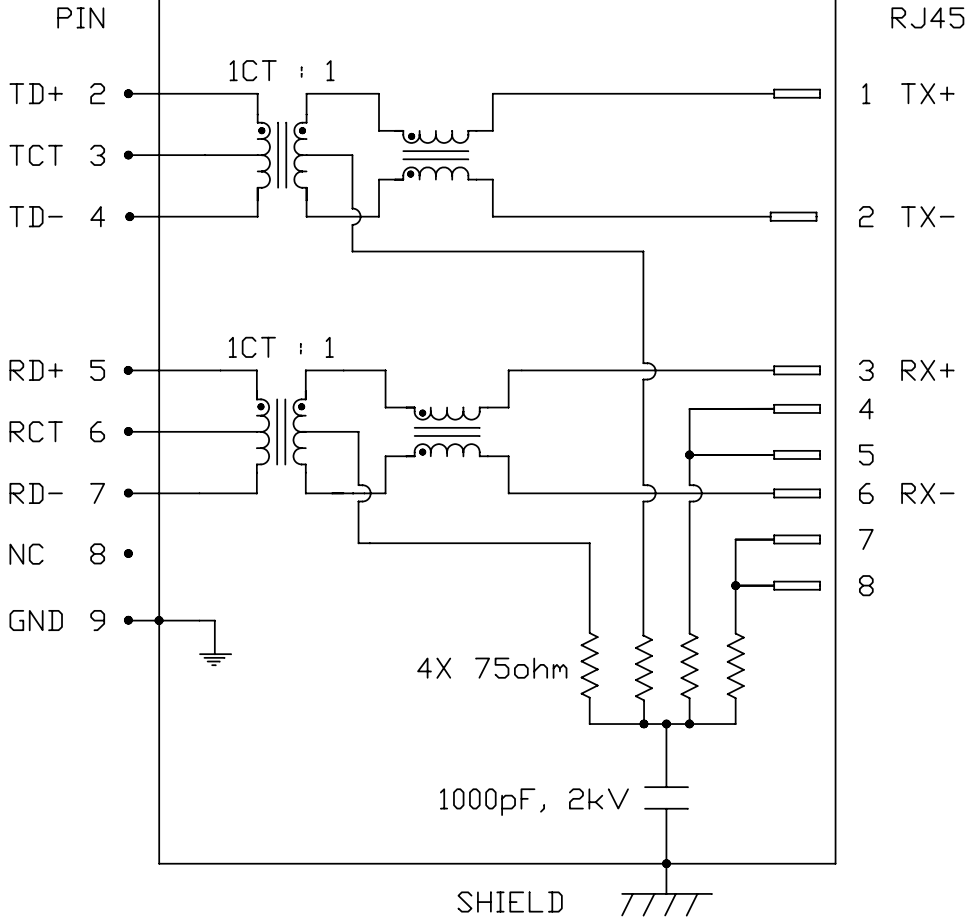
(RJ1-RJ2)=(RJ3-RJ6) 1.4 ohms Max

USB ELECTRICAL:

INSULATION RESISTANCE: 1000 MEGA (MIN)

CONTACT RESISTANCE: 25 MILLI W(MAX)

DIELECTRIC WITHSTANDING: 750 VAC



ORIGINATED BY DATE
CHOW WANCHUNG 06-04-09

DRAWN BY DATE
WEIDE LEE 06-04-09

TITLE
MagJack® Combo
(Staggered pin)
PATNETED

PART NO. / DRAWING NO.
C894-1XX1-E5

FILE NAME
C894-1XX1-E5_PA.DWG

STANDARD DIM.
TOL. IN INCH

.X
.XX
.XXX

[] METRIC DIM. AS REFERENCE

UNIT : INCH [mm]

SCALE : N/A

PAGE : 2

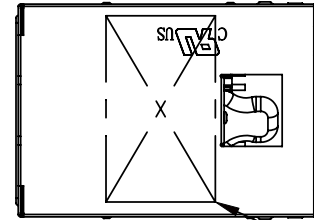
bel
COMPONENTS FOR A
CONNECTED
PLANET

THE INFORMATION CONTAINED HEREIN IS CONSIDERED "PROPRIETARY" TO BEL FUSE INC. AND SHALL NOT BE COPIED, REPRODUCED OR DISCLOSED WITHOUT THE WRITTEN APPROVAL OF BEL FUSE INC.

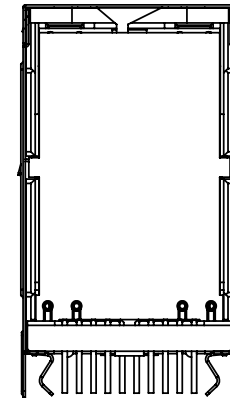
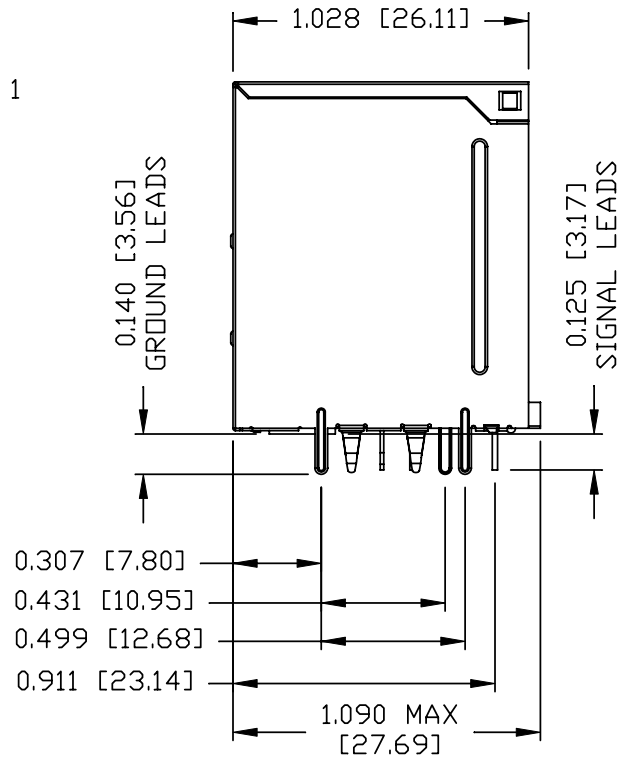
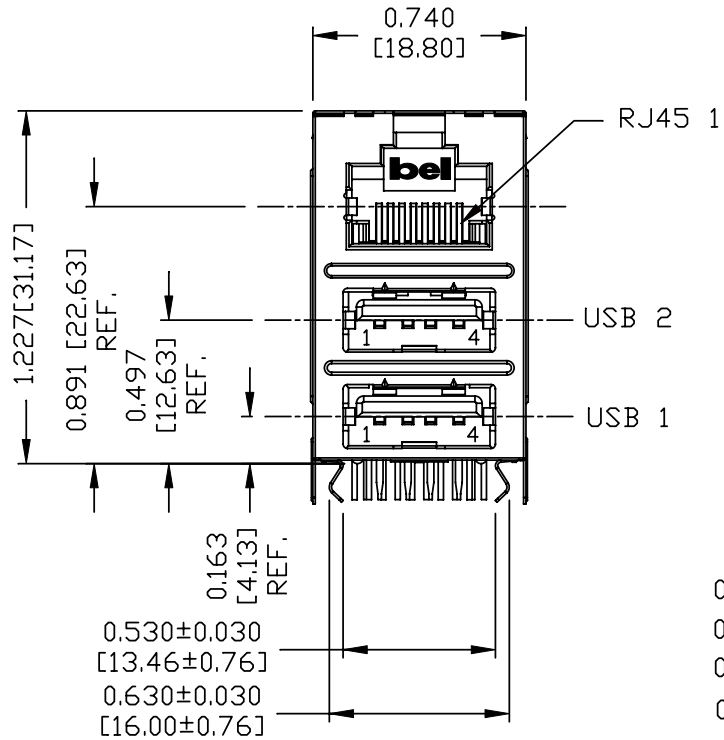
MECHANICAL SPECIFICATION

PRELIMINARY

RoHS
2002/95/EC



1



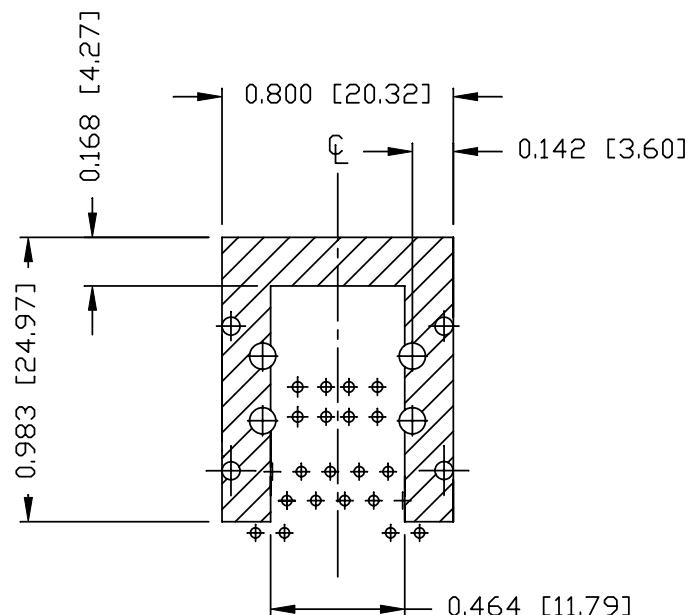
ORIGINATED BY BILL CHEN	DATE 06-04-09	TITLE MagJack® Combo (Staggered pin) PATNETED	PART NO. / DRAWING NO. C894-1XX1-E5		STANDARD DIM. TOL. IN INCH		[] METRIC DIM. AS REFERENCE	
			FILE NAME C894-1XX1-E5_PA.DWG		.X		UNIT : INCH [mm]	REV. : PA
DRAWN BY LIU QIN	DATE 06-04-09				.XX		SCALE : N/A	SIZE : A4
					.XXX	±0.010		PAGE : 3

bel
COMPONENTS FOR A
CONNECTED
PLANET

THE INFORMATION CONTAINED HEREIN IS CONSIDERED
 "PROPRIETARY" TO BEL FUSE INC. AND SHALL NOT BE
 COPIED, REPRODUCED OR DISCLOSED WITHOUT THE
 WRITTEN APPROVAL OF BEL FUSE INC.

PRELIMINARY

RoHS
 2002/95/EC



THE SHADED AREA ON THE CUSTOMER BOARD ARE
 RECOMMENDED TO BE CLEAR OFF ANY VIA HOLE OR
 COMPONENT PAD.

ORIGINATED BY	DATE	TITLE	PART NO. / DRAWING NO.	STANDARD DIM. TOL. IN INCH	[] METRIC DIM. AS REFERENCE
CHEN BILL	06-04-09	MagJack® Combo (Staggered pin) PATNETED	C894-1XX1-E5	.X	UNIT : INCH [mm] REV. : PA
DRAWN BY	DATE		FILE NAME	.XX	SCALE : N/A SIZE : A4
LIU QIN	06-04-09		C894-1XX1-E5_PA.DWG	.XXX ±0.004	PAGE : 4

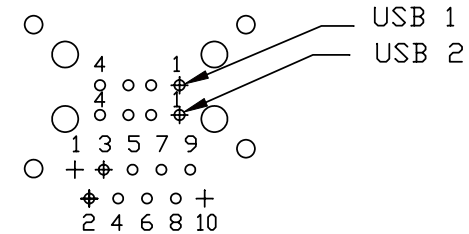
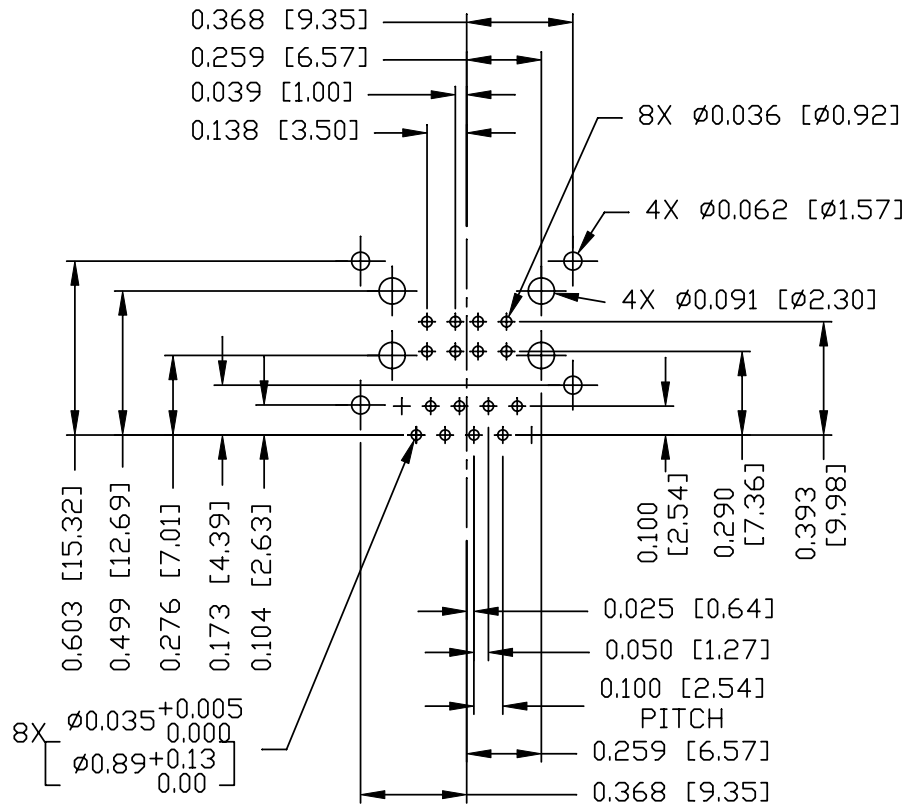


PRELIMINARY

RoHS
2002/95/EC



Recommended PCB footprint
Component Side



RJ45 MECHANICAL:

PLASTIC HOUSING: THERMOPLASTIC PBT
FLAMMABILITY RATING UL 94V-0
CONTACTS PLATING: 50 MICRO-INCH HARD GOLD PLATING
PINS: TIN-COATED CP WIRE, DIA 0.018 INCH.
METAL SHIELD: NICKEL PLATED ON COPPER ALLOY.
(ALL GROUND LEADS ARE SOLDER DIPPED)

USB MECHANICAL:

MATING FORCE: 35 NEWTONS MAXIMUM
UNMATING FORCE: 10 NEWTONS MINIMUM
CONTACT: PHOSPHOR BRONZE
30 MICRO-INCH GOLD PLATING ON CONTACT
AREA AND TIN ON SOLDER TAIL.

1. MARK PART WITH MFG LOGO, MFG NAME, PART NUMBER, AND
DATE CODE.

UL US UL RECOGNIZED - FILE #E196366 AND E169987.

RoHS COMPLIANCE, PER EU DIRECTIVE 2002/95/EC.

JACK CAVITY CONFORMS TO FCC RULES AND REGULATIONS.

THE PRODUCT IS PATENTED, THE PATENT NUMBER IS U.S. PAT. 5,736,910.

ORIGINATED BY	DATE	TITLE	PART NO. / DRAWING NO.	STANDARD DIM. TOL. IN INCH	[] METRIC DIM. AS REFERENCE
BILL CHEN	06-04-09	MagJack® Combo (Staggered pin) PATNETED	C894-1XX1-E5		UNIT : INCH [mm] REV. : PA
DRAWN BY	DATE		FILE NAME	.X .XX .XXX	SCALE : N/A SIZE : A4
LIU QIN	06-04-09		C894-1XX1-E5_PA.DWG	±0.004	PAGE : 5

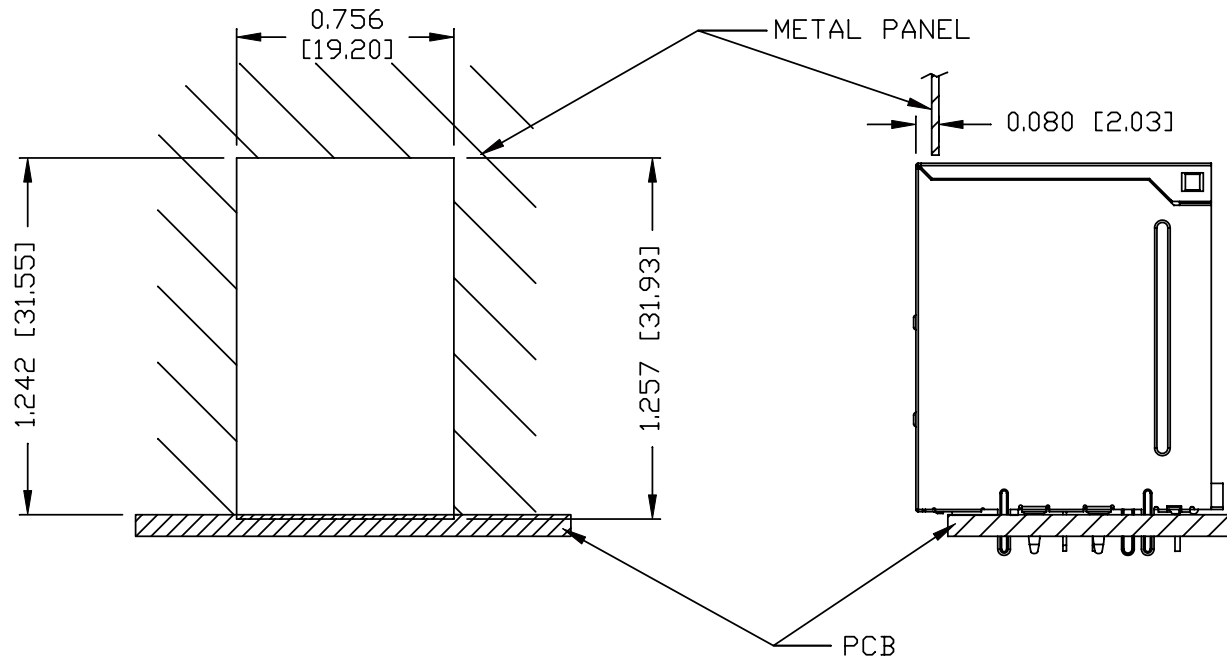


THE INFORMATION CONTAINED HEREIN IS CONSIDERED "PROPRIETARY" TO BEL FUSE INC. AND SHALL NOT BE COPIED, REPRODUCED OR DISCLOSED WITHOUT THE WRITTEN APPROVAL OF BEL FUSE INC.

SUGGESTED PANEL OPENING

PRELIMINARY

RoHS
2002/95/EC



NOTE:

THE DISTANCE OF PANEL INSIDE SURFACE RELATIVE TO FRONT SURFACE OF PART IS ONLY A SUGGESTION. IN CASE THIS DISTANCE IS DIFFERENT, THE REQUIRED PANEL OPENING DIMENSIONS CHANGE ACCORDINGLY.

PACKING INFORMATION

PACKING TRAY : 0200-9999-H3 (TOP)
0200-9999-H4 (BOTTOM)

PACKING QUANTITY : 35 PCS FINISHED GOODS PER TRAY
9 TRAYS (315 PCS FINISHED GOODS) PER CARTON BOX

NOTE : CARDBOARDS ARE PLACED BETWEEN LAYERS OF PACKING TRAY INSIDE CARTON BOX
(INCLUDE THE UPPERMOST AND LOWERMOST TRAY)

ORIGINATED BY	DATE	TITLE	PART NO. / DRAWING NO.	STANDARD DIM. TOL. IN INCH	[] METRIC DIM. AS REFERENCE	
BILL CHEN	06-04-09	MagJack® Combo (Staggered pin) PATNETED	C894-1XX1-E5		UNIT : INCH [mm]	REV. : PA
DRAWN BY	DATE		FILE NAME	.X	SCALE : N/A	SIZE : A4
LIU QIN	06-04-09		C894-1XX1-E5_PA.DWG	.XX .XXX	±0.004	PAGE : 6

bel
COMPONENTS FOR A
CONNECTED
PLANET