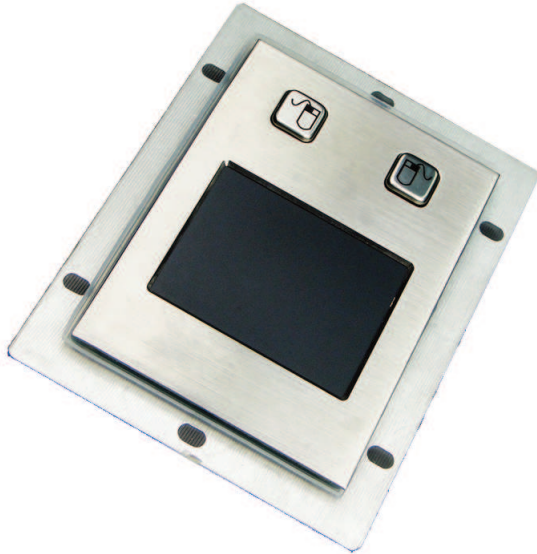


Industrial Pointing Vandal-proof, Waterproof Metal Touchpad Device



Product Features

- High-sensitivity touchpad
- Dust-proof and liquid-proof, IP65 compliance
- Exposed parts made of stainless steel, resistant against vandalism
- Designed to operate in harsh environments, making it ideal for application in public place and other harsh environment
- Compatible with Windows98/ME/2000/XP
- PS/2 or USB interface
- Panel-mount

Product Description

Rugged stainless steel, water-proof, vandal-resistant, high-sensitivity, durable touchpad with left and right click buttons

Certification : CE, FCC

Material

- Front Panel: stainless steel
- Key: stainless steel
- Back Panel: aluminum alloy

Electrical Data

- voltage: 5.0VDC \pm 5%
- electric current: 10mA
- EMC compliant
- Touchpad resolution: 1000dpi

Environmental Characteristics

- Operating temperature: -20°C to + 60°C
- Storage temperature: - 40°C to + 80°C
- Saline mist: 96 hours, IEC 60512-6
- Damp heat test at + 40°C: 21 days, IEC 60512-6
- Dry heat test at + 85°C: 10 days, IEC 60512-6

Mechanical Data

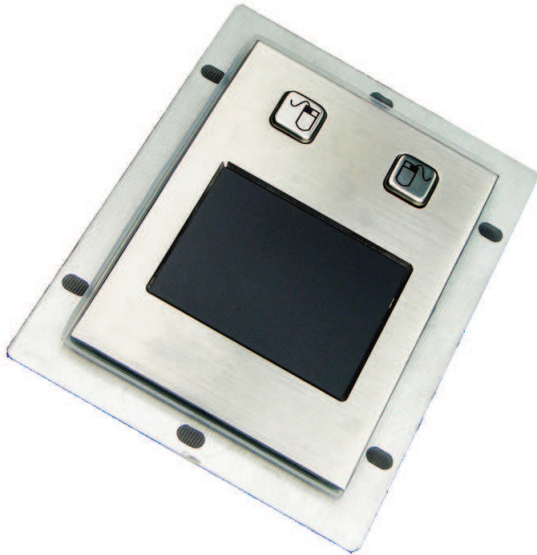
- Lifecycle: >5 million times per key
- Key Travel: 2mm
- Actuation Force for Keys: 80g nominal
- Lettering: Etched graphics with permanent ink

Operation system

- PS2: Win NT4, 98SE, 98ME, 2000, XP
- USB: Win 98SE, 98ME, 2000, XP, Mac OS9 / OSX

www.itacsystems.com

Industrial Pointing Vandal-proof, Waterproof Metal Touchpad Device



Product Description Continued

Reliability

- MTBF >20000h
- MTTR <30min

Dimension

- Face plate: 110 x 83 mm (LxW)