

THE INFORMATION CONTAINED HEREIN IS CONSIDERED "PROPRIETARY" TO BEL FUSE INC. AND SHALL NOT BE COPIED, REPRODUCED OR DISCLOSED WITHOUT THE WRITTEN APPROVAL OF BEL FUSE INC.

LED 1 POLARITY			LED 2 POLARITY		
PIN 22	PIN 21	COLOR	PIN 20	PIN 19	COLOR
+	-	ORANGE	+	-	ORANGE
-	+	GREEN	-	+	GREEN

RoHS
2002/95/EC



ELECTRICAL CHARACTERISTICS @ 25°C

URNS RATIO

TP1	1CT : 1CT ±2%
TP2	1CT : 1CT ±2%
TP3	1CT : 1CT ±2%
TP4	1CT : 1CT ±2%

□CL @ 100kHz/100mVRMS

8mA DC BIAS 350μH MIN.

INS. LOSS

1MHz TO 100MHz -1.2 dB MAX

RET. LOSS (MIN)

0.5MHz-40MHz -18 dB
40MHz-100MHz -12+20LOG(f/80MHz) dB

CM TO CM REJ

100kHz - 100MHz -30 dB MIN

CM TO DM REJ

100kHz - 100MHz -35 dB MIN

CROSS TALK

1MHz - 60MHz -35 dB MIN
60MHz - 100MHz -25 dB MIN

HIPOT (Isolation Voltage): 1500 Vrms

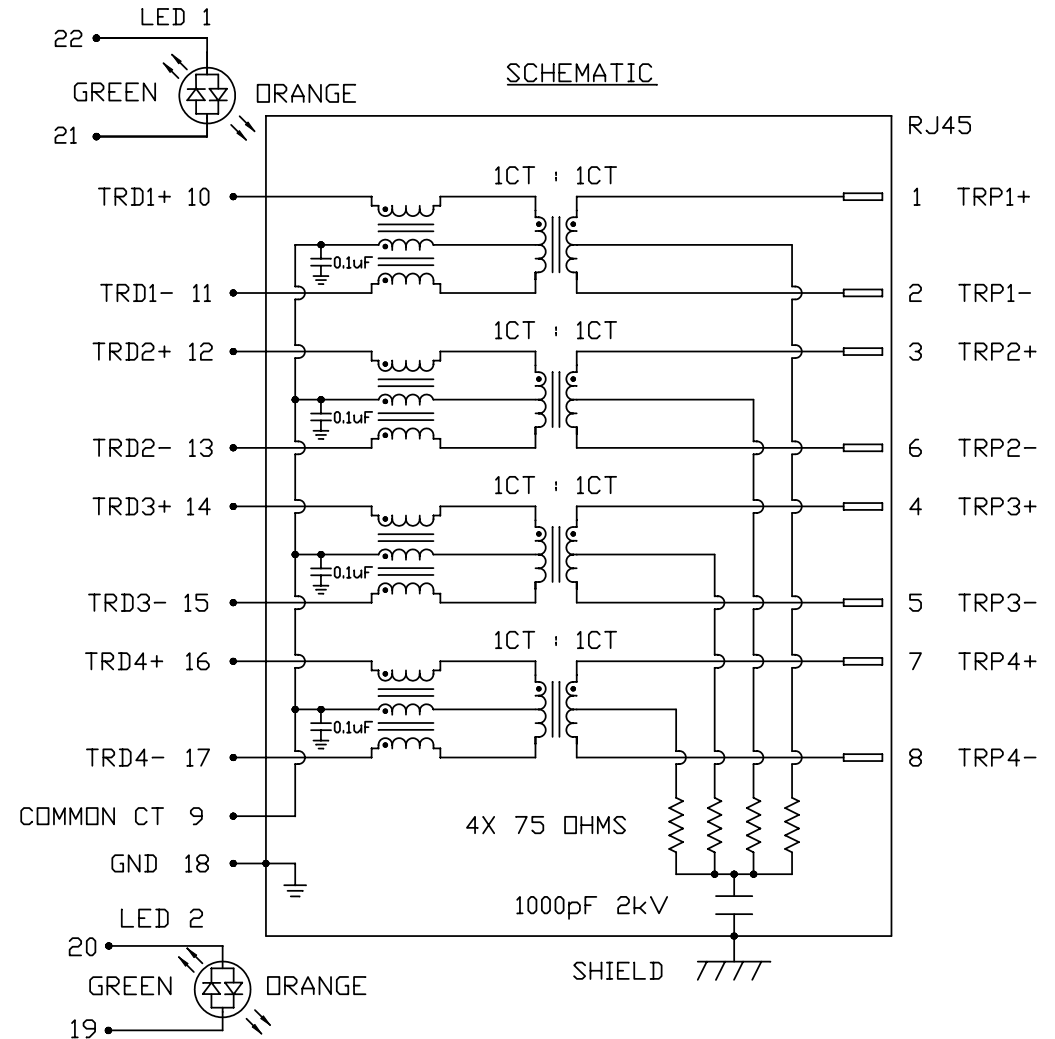
100% OF PRODUCTION TESTED TO COMPLY WITH
IEEE 802.3 ISOLATION REQUIREMENTS.




LED 1&2

VF (FORWARD VOLTAGE)	IF=20mA	GREEN	2.2V TYP.
		ORANGE	2.0V TYP.
λD (DOMINANT WAVELENGTH)	IF=20mA	GREEN	565nm TYP.
		ORANGE	610nm TYP.

USB ELECTRICAL:

INSULATION RESISTANCE: 1000 MEGAΩ (MIN)
CONTACT RESISTANCE: 25 MILLIΩ (MAX)
DIELECTRIC WITHSTANDING: 750 VAC



ORIGINATED BY	DATE	TITLE gigabit MagJack® Combo C892-1BX1-62-F PATENTED	PART NO. / DRAWING NO. C8921BX162-F	STANDARD DIM. TOL. IN INCH		[] METRIC DIM. AS REFERENCE		 bel COMPONENTS FOR A CONNECTED PLANET
CHOW WANGCHUNG	06-11-09		FILE NAME C8921BX162-F_A.DWG	.X		UNIT : INCH [mm]	REV. : A	
DRAWN BY	DATE			.XX		SCALE : N/A	SIZE : A4	
LI YONGFENG	06-11-09			.XXX			PAGE : 2	

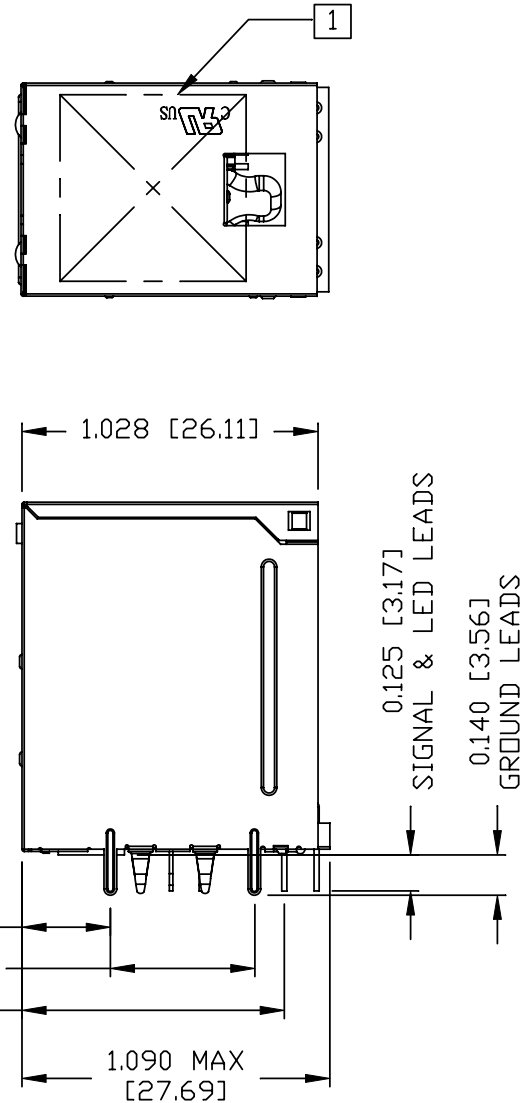
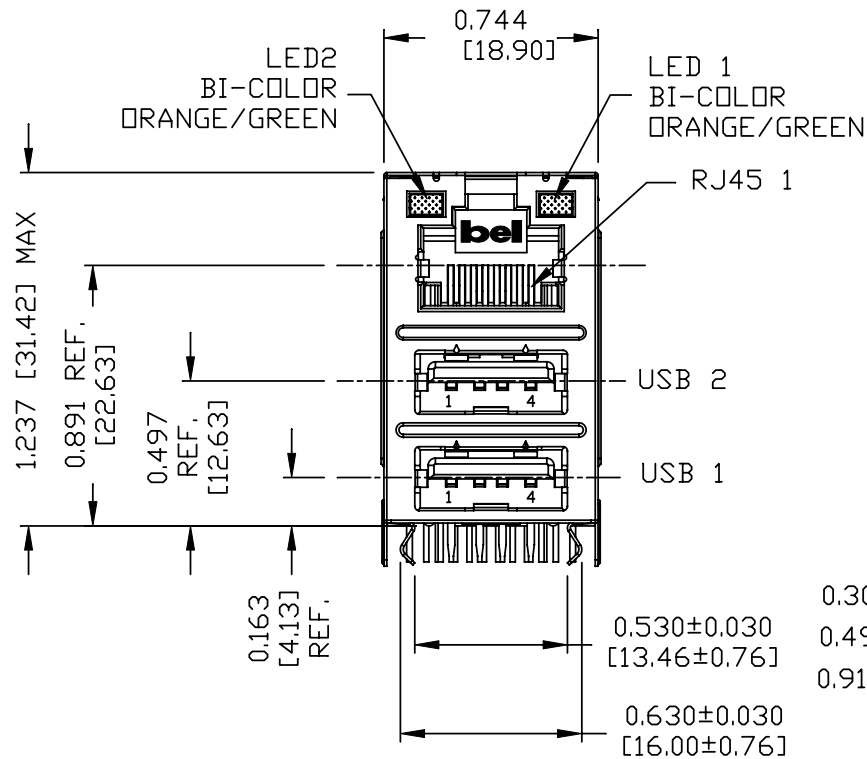
bel
COMPONENTS FOR A
CONNECTED
PLANET

THE INFORMATION CONTAINED HEREIN IS CONSIDERED "PROPRIETARY" TO BEL FUSE INC. AND SHALL NOT BE COPIED, REPRODUCED OR DISCLOSED WITHOUT THE WRITTEN APPROVAL OF BEL FUSE INC.

RoHS
2002/95/EC



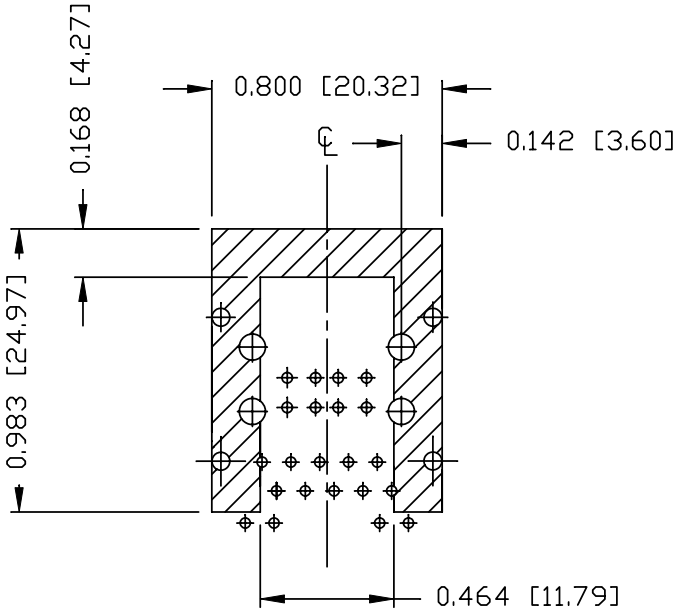
MECHANICAL SPECIFICATION



ORIGINATED BY CHEN BILL	DATE 06-11-09	TITLE gigabit MagJack® Combo C892-1BX1-62-F PATENTED	PART NO. / DRAWING NO. C8921BX162-F	STANDARD DIM. TOL. IN INCH .X .XX .XXX ±0.010	[] METRIC DIM. AS REFERENCE	
					UNIT : INCH [mm]	REV. : A
DRAWN BY LIU QIN	DATE 06-11-09		FILE NAME C8921BX162-F_A.DWG		SCALE : N/A	SIZE : A4
						PAGE : 3

bel
COMPONENTS FOR A
CONNECTED
PLANET

THE INFORMATION CONTAINED HEREIN IS CONSIDERED "PROPRIETARY" TO BEL FUSE INC. AND SHALL NOT BE COPIED, REPRODUCED OR DISCLOSED WITHOUT THE WRITTEN APPROVAL OF BEL FUSE INC.



THE SHADED AREA ON THE CUSTOMER BOARD ARE
RECOMMENDED TO BE CLEAR OFF ANY VIA HOLE OR
COMPONENT PAD.

ORIGINATED BY	DATE	TITLE gigabit MagJack® Combo C892-1BX1-62-F PATENTED	PART NO. / DRAWING NO. C8921BX162-F		STANDARD DIM. TOL. IN INCH		[] METRIC DIM. AS REFERENCE	
CHEN BILL	06-11-09		FILE NAME C8921BX162-F_A.DWG		.X		UNIT : INCH [mm]	REV. : A
DRAWN BY	DATE				.XX		SCALE : N/A	SIZE : A4
LIU QIN	06-11-09				.XXX	±0.004		PAGE : 4

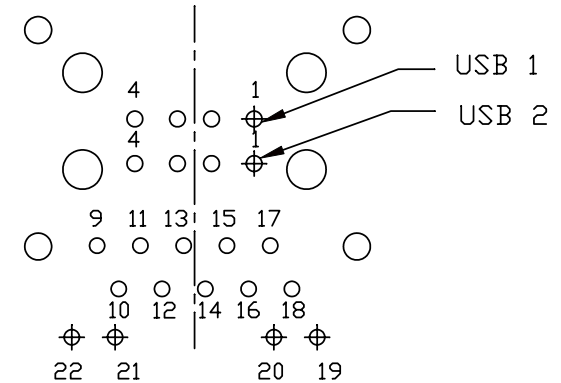
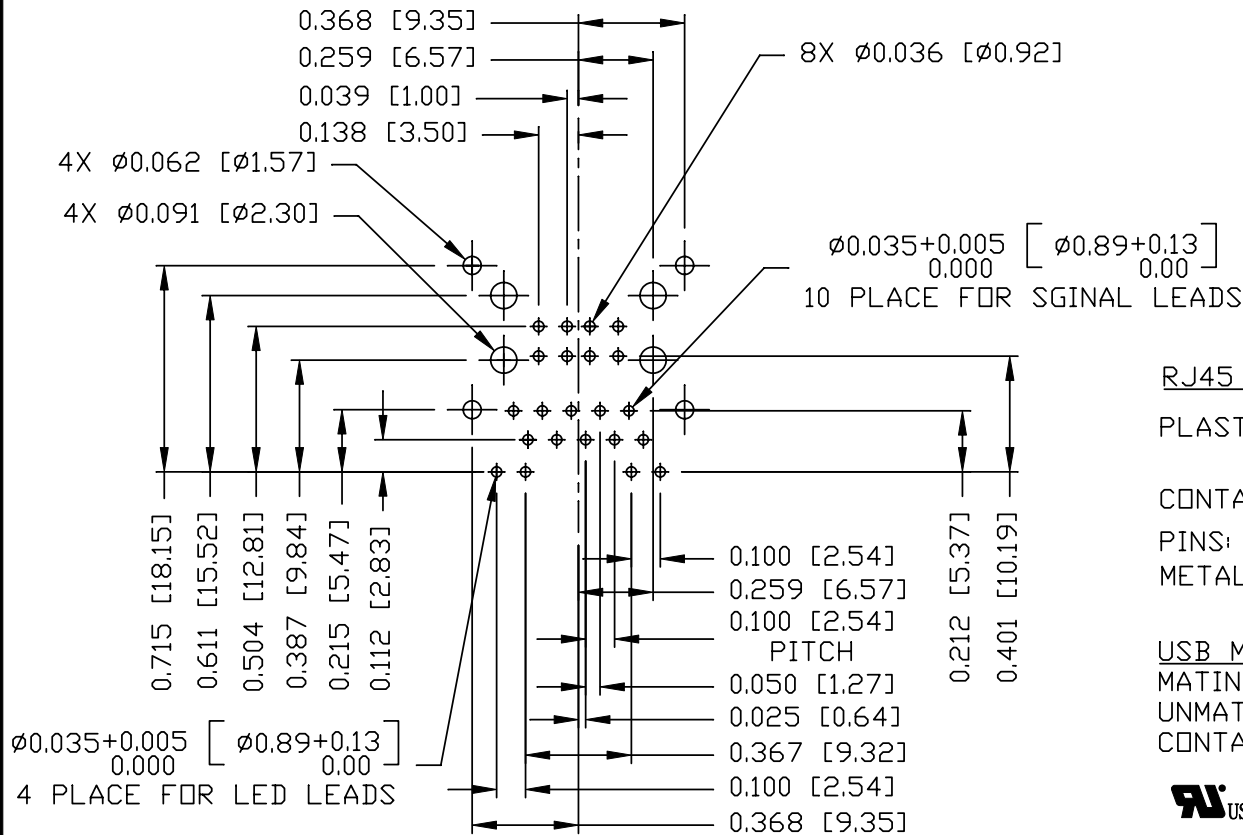


THE INFORMATION CONTAINED HEREIN IS CONSIDERED
"PROPRIETARY" TO BEL FUSE INC. AND SHALL NOT BE
COPIED, REPRODUCED OR DISCLOSED WITHOUT THE
WRITTEN APPROVAL OF BEL FUSE INC.

RoHS
2002/95/EC



Recommended PCB footprint Component Side



RJ45 MECHANICAL:

PLASTIC HOUSING:

CONTACTS PLATING:

PINS:

METAL SHIELD:

SCALE 1.5:1

THERMOPLASTIC PBT

FLAMMABILITY RATING UL 94V-0

30 MICRO-INCH HARD GOLD PLATING

TIN-COATED COPPER WIRE, DIA 0.018 INCH.

NICKEL PLATED ON COPPER ALLOY,
(ALL GROUND LEADS ARE SOLDER DIPPED)

USB MECHANICAL:

MATING FORCE: 35 NEWTONS MAXIMUM

UNMATING FORCE: 10 NEWTONS MINIMUM

CONTACTS PLATING: PROSPER BRONZE, GOLD PLATING ON
CONTACT AREA AND TIN ON SOLDER TAIL.



US UL RECOGNIZED - FILE #E196366 AND E169987.

MARK PART WITH MFG LOGO, MFG NAME, PART NUMBER,
AND DATE CODE.

RoHS COMPLIANCE, PER EU DIRECTIVE 2002/95/EC

JACK CAVITY CONFORMS TO FCC RULES AND REGULATIONS.

THE PRODUCT IS PATENTED, THE PATENT NUMBER

IS U.S. PAT. 5,736,910.

ORIGINATED BY	DATE	TITLE	PART NO. / DRAWING NO.	STANDARD DIM. TOL. IN INCH	[] METRIC DIM. AS REFERENCE
CHEN BILL	06-11-09	gigabit MagJack® Combo C892-1BX1-62-F PATENTED	C8921BX162-F		UNIT : INCH [mm] REV. : A
DRAWN BY	DATE		FILE NAME	.X	SCALE : N/A SIZE : A4
LIU QIN	06-11-09		C8921BX162-F_A.DWG	.XX .XXX ±0.004	PAGE : 5

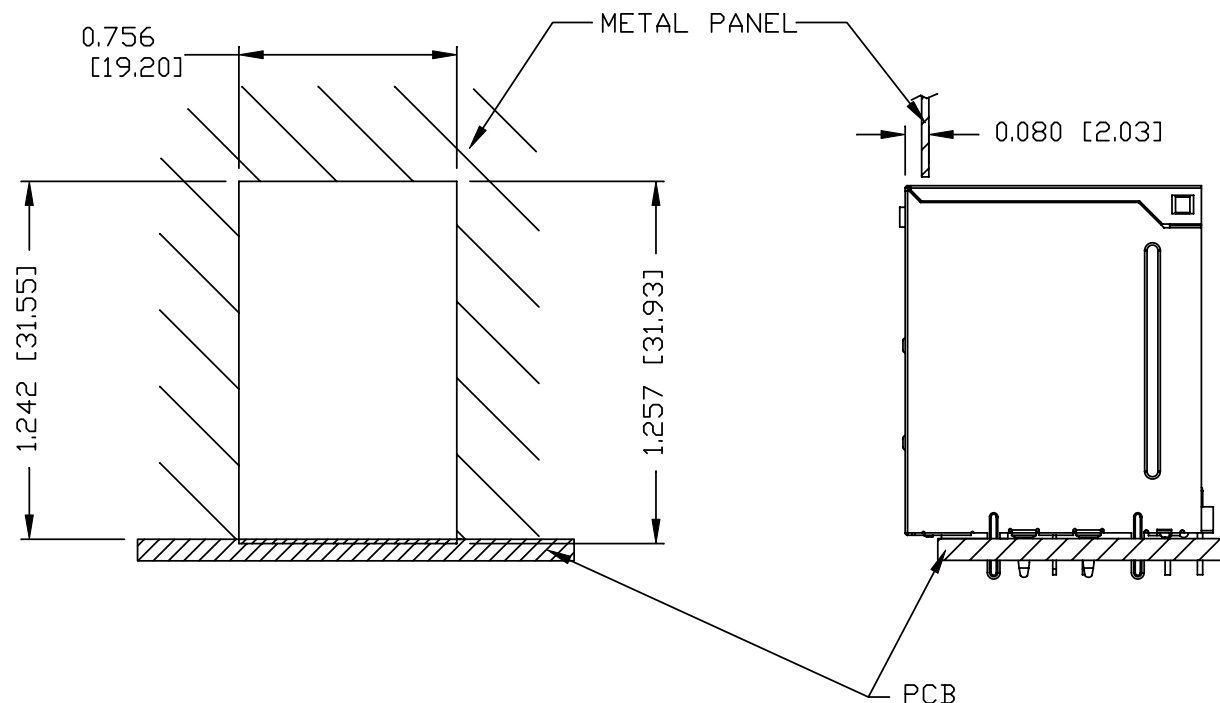


THE INFORMATION CONTAINED HEREIN IS CONSIDERED
"PROPRIETARY" TO BEL FUSE INC. AND SHALL NOT BE
COPIED, REPRODUCED OR DISCLOSED WITHOUT THE
WRITTEN APPROVAL OF BEL FUSE INC.

RoHS
2002/95/EC



SUGGESTED PANEL OPENING



NOTE:

THE DISTANCE OF PANEL INSIDE SURFACE RELATIVE TO FRONT SURFACE OF PART IS ONLY A SUGGESTION.
IN CASE THIS DISTANCE IS DIFFERENT, THE REQUIRED PANEL OPENING DIMENSIONS CHANGE ACCORDINGLY.

PACKING INFORMATION

PACKING TRAY : 0200-9999-H3 (TOP)

0200-9999-H4 (BOTTOM)

PACKING QUANTITY : 35 PCS FINISHED GOODS PER TRAY

9 TRAYS (315 PCS FINISHED GOODS) PER CARTON BOX

NOTE : CARDBOARDS ARE PLACED BETWEEN LAYERS OF PACKING TRAY INSIDE CARTON BOX

(INCLUDE THE UPPERMOST AND LOWERMOST TRAY)

ORIGINATED BY	DATE	TITLE	PART NO. / DRAWING NO.	STANDARD DIM. TOL. IN INCH	[] METRIC DIM. AS REFERENCE
CHEN BILL	06-11-09	gigabit MagJack® Combo C892-1BX1-62-F PATENTED	C8921BX162-F	.X	UNIT : INCH [mm] REV. : A
DRAWN BY	DATE		FILE NAME	.XX	SCALE : N/A SIZE : A4
LIU QIN	06-11-09		C8921BX162-F_A.DWG	.XXX ±0.004	PAGE : 6

bel
COMPONENTS FOR A
CONNECTED
PLANET