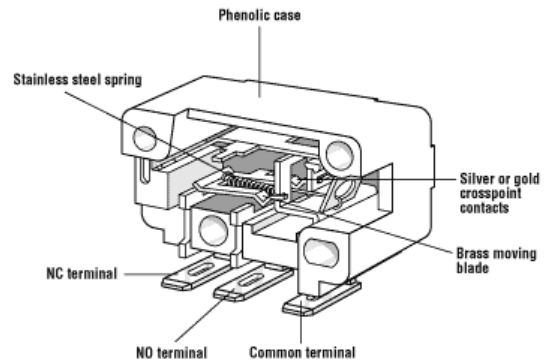


Miniature Low Torque Snap Action Switch E51/E53 Series



Features

- Long life coil spring mechanism
- Low torque rotary actuation
- Clockwise or counter clockwise actuation
- Six terminal styles
- RoHS compliant

Electrical Ratings and Operating Life

| Switch Series | According to UL 1054 | |
|---------------|----------------------|-------------------------------|
| | Nominal Load | Electrical Life at Rated Load |
| E51 | 6A, 250VAC | 6,000 |
| E53 | 0.1A, 125VAC | 6,000 |

Technical Specifications

Temperature Rating: -40°C to 85°C

Flammability Rating UL94HB

Mounting: Recommended screw: #4-40 round head
Recommended torque: 4 inch lbs. max

UL File Number: E23301

RoHS Compliant

Specifications subject to change

Material Specifications

Case: General Purpose Phenolic

Terminal: Silver Plated Brass

Moving Blade: Brass

Contacts: E51: Silver Alloy
E53: Gold Crosspoint

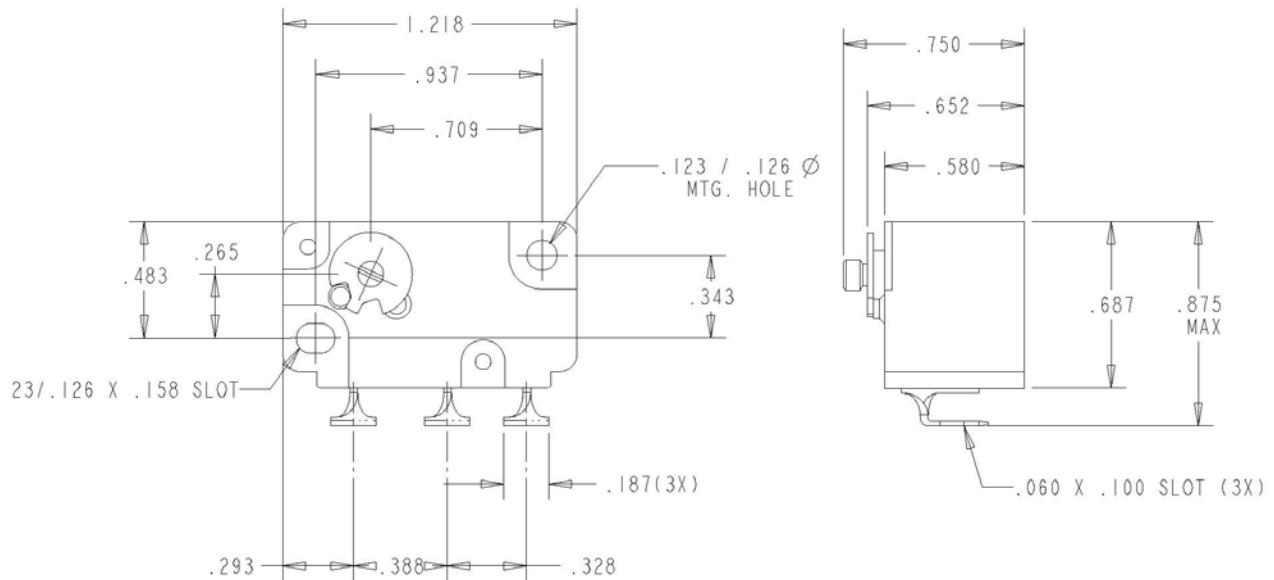
Spring: Stainless Steel



Miniature Low Torque

E51/E53 Series

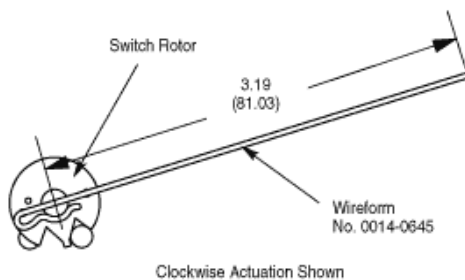
Dimensions inches



Terminal Options inches

| | | |
|-------------------|----------------|-------------------|
| | | |
| Standard Parallel | Vertical Twist | Vertical Straight |

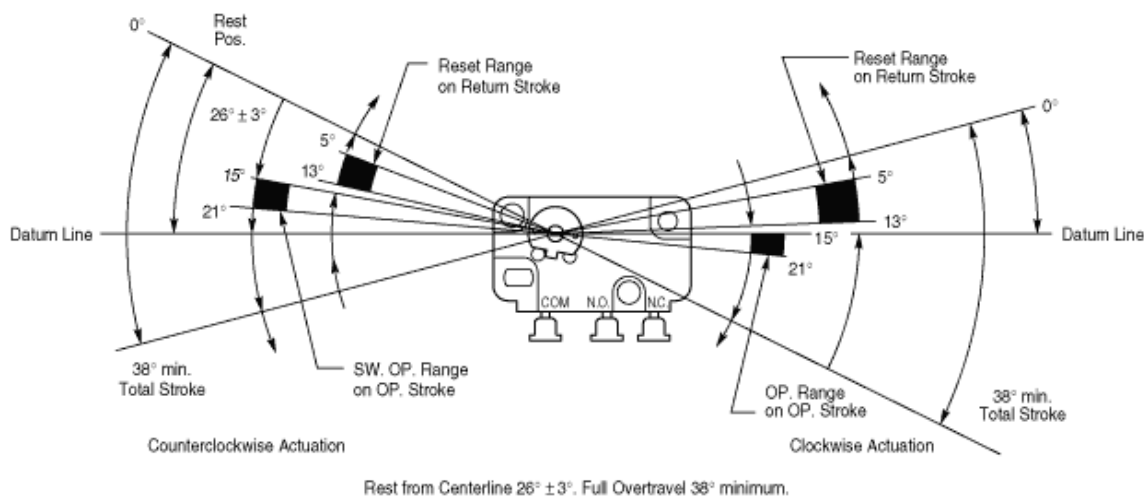
Actuators



- Wireform actuators are supplied unassembled with each switch, they may be assembled to the switch rotor as shown.

Commonly Stocked Distributor Items / Preferred Part Numbers

| Part Number | Contacts | Terminal Size | Operating Direction | Maximum Operate Force (inch gms) | Operate Point degrees | Minimum Overtravel degrees | Max. Movement Differential degrees | Minimum Total Stroke degrees |
|-------------|-----------------|--------------------------|---------------------|----------------------------------|-----------------------|----------------------------|------------------------------------|------------------------------|
| 0E5100B0 | Silver Alloy | Standard Parallel 0.205" | Clockwise | 4.0 | 15-21 | 17 | 3 | 38 |
| 0E5100E0 | Silver Alloy | Standard Parallel 0.205" | Counter Clockwise | 4.0 | 15-21 | 17 | 3 | 38 |
| 0E5100R0 | Silver Alloy | Standard Parallel 0.187" | Clockwise | 4.0 | 15-21 | 17 | 3 | 38 |
| 0E5100T0 | Silver Alloy | Standard Parallel 0.187" | Counter Clockwise | 4.0 | 15-21 | 17 | 3 | 38 |
| 0E5150B0 | Silver Alloy | Vertical Twist 0.205" | Clockwise | 4.0 | 15-21 | 17 | 3 | 38 |
| 0E5150E0 | Silver Alloy | Vertical Twist 0.205" | Counter Clockwise | 4.0 | 15-21 | 17 | 3 | 38 |
| 0E5150R0 | Silver Alloy | Vertical Twist 0.187" | Clockwise | 4.0 | 15-21 | 17 | 3 | 38 |
| 0E5150T0 | Silver Alloy | Vertical Twist 0.187" | Counter Clockwise | 4.0 | 15-21 | 17 | 3 | 38 |
| 0E5160B0 | Silver Alloy | Vertical Straight 0.205" | Clockwise | 4.0 | 15-21 | 17 | 3 | 38 |
| 0E5160E0 | Silver Alloy | Vertical Straight 0.205" | Counter Clockwise | 4.0 | 15-21 | 17 | 3 | 38 |
| 0E5300R0 | Gold Crosspoint | Standard Parallel 0.187" | Clockwise | 4.0 | 15-21 | 17 | 3 | 38 |



Ordering Information

Select the current rating prefix you need (E51/E53). Combine the prefix with the corresponding terminal configuration. For example part number E53-60E will provide you with a gold crosspoint counter clockwise operating switch with 0.205" vertical straight terminals. To order a normally open version simply 'add 1' to the suffix to obtain E53-61E and normally closed 'add 2' for part number E53-62E

Contact

Call, fax or visit our Website for more information.

ZF Electronics Corporation
11200 88th Avenue
Pleasant Prairie, WI 53158

Phone: 262.942.6500
Web: www.cherrycorp.com
Email: cep_sales@zf.com
Fax: 262.942.6566

The manufacturer accepts no liability for errors or non-availability, and reserves the right to change specifications without prior notice.

Technical data relates to product specifications only. Features may differ from those described. Only drawings combined with product specifications shall be deemed binding.

© 2007 ZF Electronics Corporation

Last Updated: 02/25/11

